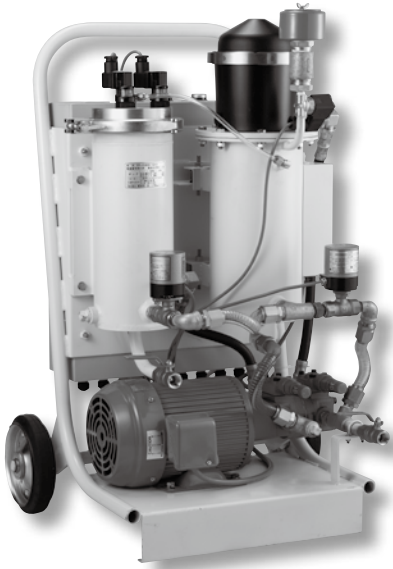
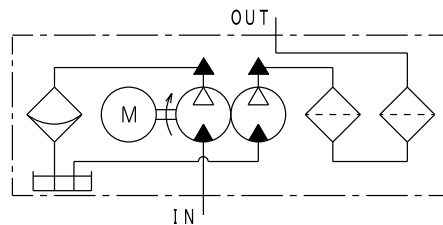


### High performance Off-line Filter for oil cleanliness improvement



#### Characteristics

- "Oil Refresher" enables TAISEI's original triple filtration method:
  - ① Sludge removal by Centrifugal separator
  - ② Water elimination by Water absorption element
  - ③ Fine particle removal by High performance C-fiber element
- Lower running cost comparing with a general off-line filter
- Clogging indicator (electric contact type) is included in standard model
- Integration time meter, outside lamp, and sight glass are selectable for special accessory
- Cart-type filtration unit enables movable filtration at several locations



FP-1500S-1010

#### SPECIFICATION

Corresponding fluid	Oil type	Mineral oil
	Kinematic viscosity mm <sup>2</sup> /s	20 ~ 200
	(Standard temperature) °C	(ISO VG32 : 7 ~ 52) VG46 : 13 ~ 60 VG68 : 21 ~ 61)
Max working pressure	°C	0 ~ 60
Cracking pressure	MPa	0.3

Pump	Flow rate	ℓ /min	50Hz 9.0 60Hz 10.8	
	Discharge pressure	MPa	1.0	
	Cracking pressure	MPa	IN → Centrifugal separator	0.7
			Tank → Filter	0.7
	IN·OUT inner diameter		Rc1/2	
Motor	Voltage	V	3 phase 200*	
	Output	kW	1.5	
Accessory	Suction strainer		Y-type suction strainer (Standard equipment)	
	Braid hose		IN/OUT : 1/2B x 2.0m	
Weight		Kg	About 95	

\* Please ask us for special specification: overseas spec (different AC voltage).

#### MODEL CODE

(Model code example)

**FP** - **1500S** - **1010** - **3C** - **S H T**  
① ② ③

Code	Filtration rating
C-Fiber	
3C	3 μm
8C	8 μm

Refer to P.15 -16 for detail information of filter element.

Code	Option
①	Sight glass
Blank	Non
S	Sight glass
②	IN, OUT, hose tip shape
Blank	Joint (R1/2)
H	Non (Notch)

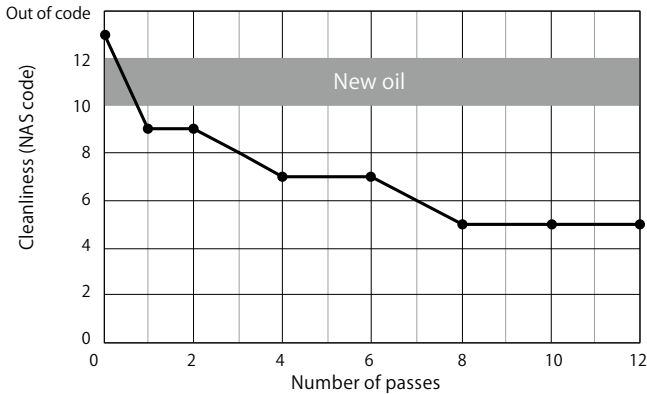
Code	Option
③	Control box
Blank	Non
T	Integration time meter
R	Outside lamp
TR	Integration time meter, Outside lamp

## FLOW RATE GRAPH

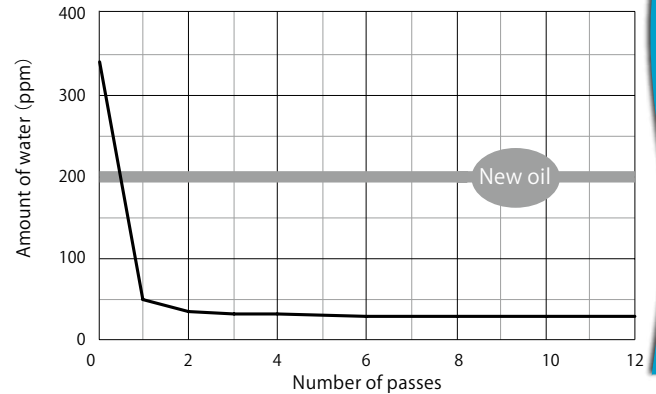
### Condition

Fluid type : ISO VG46 Tank capacity : 40 ℓ Dust type : ACFTD Amount of water : 100cc

### FP model Cleanliness



### FP model Amount of water removal



## DIMENSION • PARTS LIST

**FP-1500S-1010-□□-S□□**

No.	Item	Qty
1	Carrier	1
2	Filter	1
3	Water absorption element	1
4	Filter element	1
5	Centrifuge	1
6	Tank	1
7	Air breather Model : AP-02	1
8	Level sensor	3
9	Pump motor	1
10	Ball valve	2
11	Control box	1
12	Ball valve	2
13	O-ring	2
14	O-ring	2
15	O-ring	1
16	Indicator Mode : EA-3	2
17	O-ring	2
18	O-ring	2
19	Packing	1
20	Drain plug	2
21	Packing	1
22	Rubber vibration isolator	4
23	Paper insert	1
24	O-ring	1
25	O-ring	1
26	Solenoid valve	1
27	Sensor Cover	1
28	Screw	2
29	Sight glass	1
30	O-ring	1

## SEALING PARTS LIST

No.	13	14	15	17	18	19	21	24	25	30
Standard	JIS B2401 1A			JIS B2401 1B	JIS B2401 1A	Special packing NBR	Special packing non asbestos	O-ring for centrifuge		
Model code	JIS B2401 1A			JIS B2401 1B	JIS B2401 1A	Special packing NBR	Special packing non asbestos	O-ring for centrifuge		
FP-1500S-1010	P32	G80	G140	P18	P14	t3xφ213/φ167	t1.5xφ106/φ96	For rotor	For cover	For cover nut

## MODEL CODE OF SPARE PARTS

### Replacement element

No.	Item	Element model	Filtration rating	Remarks
3	Water absorption element	P-AN-03100-W	For water absorption	With O-ring
4	Filter element	P-GF-A-08-3-3C	3 μm	
		P-GF-A-08-3-8C	8 μm	
23	Paper insert	FM060	For centrifuge	25 sheets /sets