

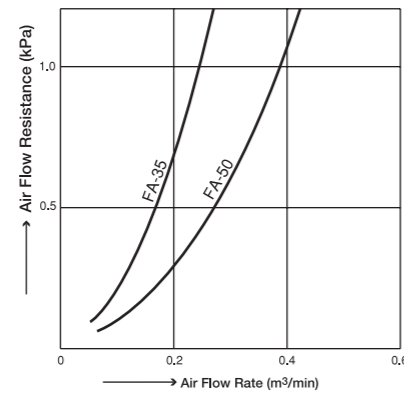


1. Model FA filter breather is installed on top of a reservoir tank to serve as inlet and air breather.
2. Hard paper used in element removes mist effectively.
3. Oiling filter can be removed remaining in "Flange for fixing" secured to tank.

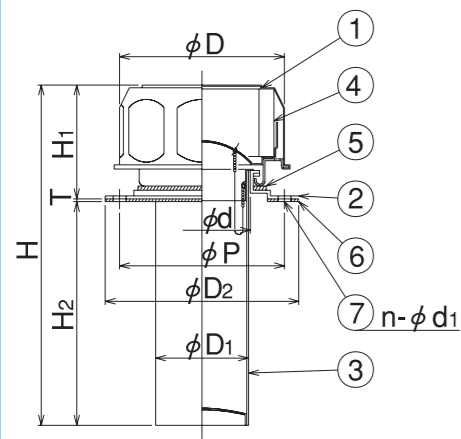
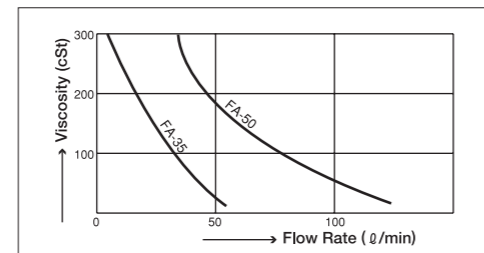
■ Part List

Part No.	Part Name	Material	Qty	Remarks
7	Set screw	SS	4	
6	Packing	Non asbestos	1	
5	Packing	Nitrile rubber	1	
4	Element	Hard paper	1	20U equivalent
3	Oiling filter	SPCC	1	φ 1
2	Flange for fixing	SPCC	1	
1	Cover assy	SPCC	1	Baking finish (Dark red)

■ Model FA Air Flow Resistance

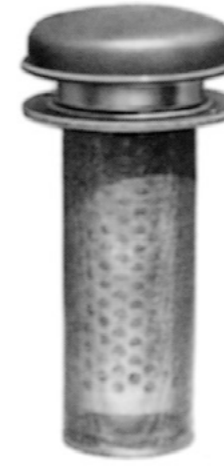


■ Model FA Oil Flow



■ Dimensions

Symbol Model	d	D	D ₁	D ₂	P	H	H ₁	H ₂	T	n-d ₁	Set Screw	Mass (kg)
FA-35	34	58	33	68	58	119.6	40	78.1	1.5	4-φ 4.5	M4×8	0.15
FA-50	50	80	48.2	88	78	188.4	51	135.9	1.5	4-φ 5.5	M5×10	0.3

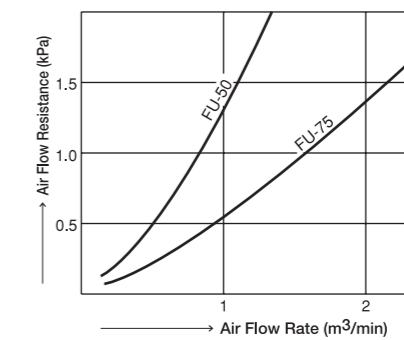


1. Model FU filter breather is installed on top of a reservoir tank to serve as inlet and air breather.

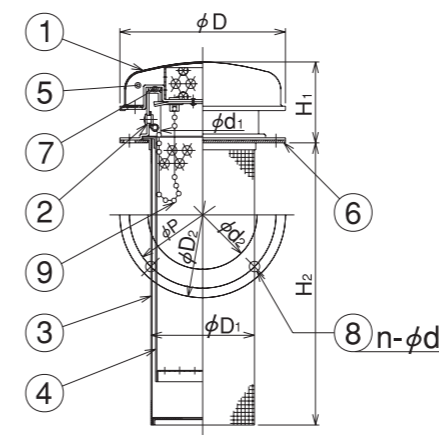
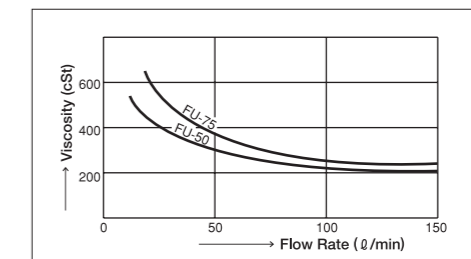
■ Part List

Part No.	Part Name	Material	Qty	Remarks
9	Ball chain	Brass	1 set	
8	Set screw	SS	1 set	
7	Packing	Cork	1	
6	Packing	Non asbestos	1	
5	Element	SS	1 set	Steel wool
4	Inner tube	SPCC	1	
3	Oiling filter	SPCC SUS net	1	40 mesh
2	Flange for fixing	SPCC	1	
1	Cover assy	SPCC	1	Baking finish (Dark red)

■ Model FU Air Flow Resistance



■ Model FU Oil Flow



■ Dimensions

Symbol Model	d ₁	D ₁	d ₂	D	D ₂	P	H ₁	H ₂	n-d ₃	Set Screw	Mass (kg)	Air Flow Rate m ³ /min (Pressure drop 0.5 kPa)
FU-50	45	55	58	88	88	78	43	150	4-φ 5.5	M5×10	0.4	0.5
FU-75	66	79	83	115	115	105	60	200	6-φ 5.5	M5×10	0.8	1