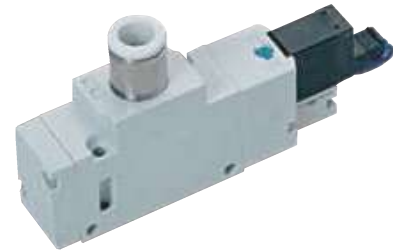


NEW VLCP

Large Flow Vacuum Generator



Flow Control

Control suction flow by control supply air pressure.



Cylindrical Structure

Suitable for transporting materials of various shapes, films, chips and other particles.



Maintenance

Unnecessary maintenance.



High Efficiency

Powerfully increased suction flow rate compared to supply flow rate.



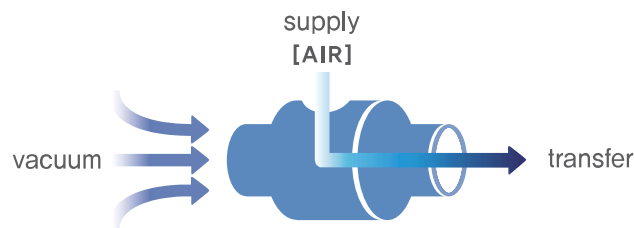
VLCP series

Large Flow Vacuum Generator

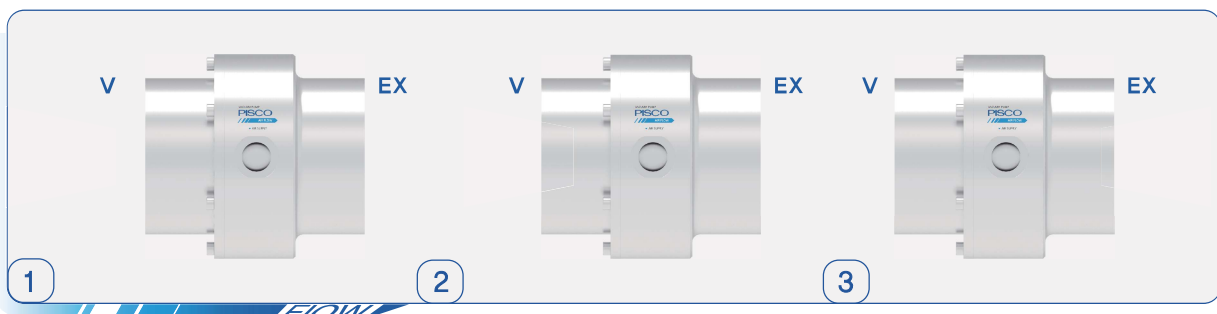
Principle of Operation

Principle of Operation

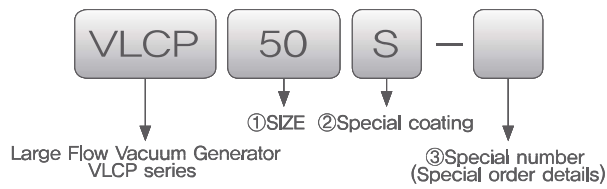
Compressed air is supplied inside the VLCP and discharged through a small hole. The rapid flow of compressed air through the small hole creates internal and external differential pressure, which results in strong airflow. It can be used in a variety of ways.



Transfer process



Order Information



① SIZE

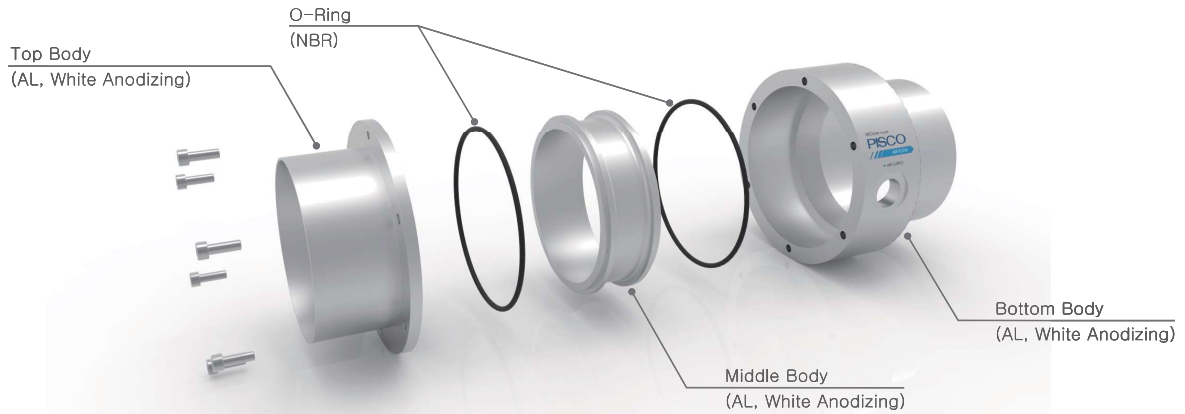
SIZE	50	100	135

② Special coating selection

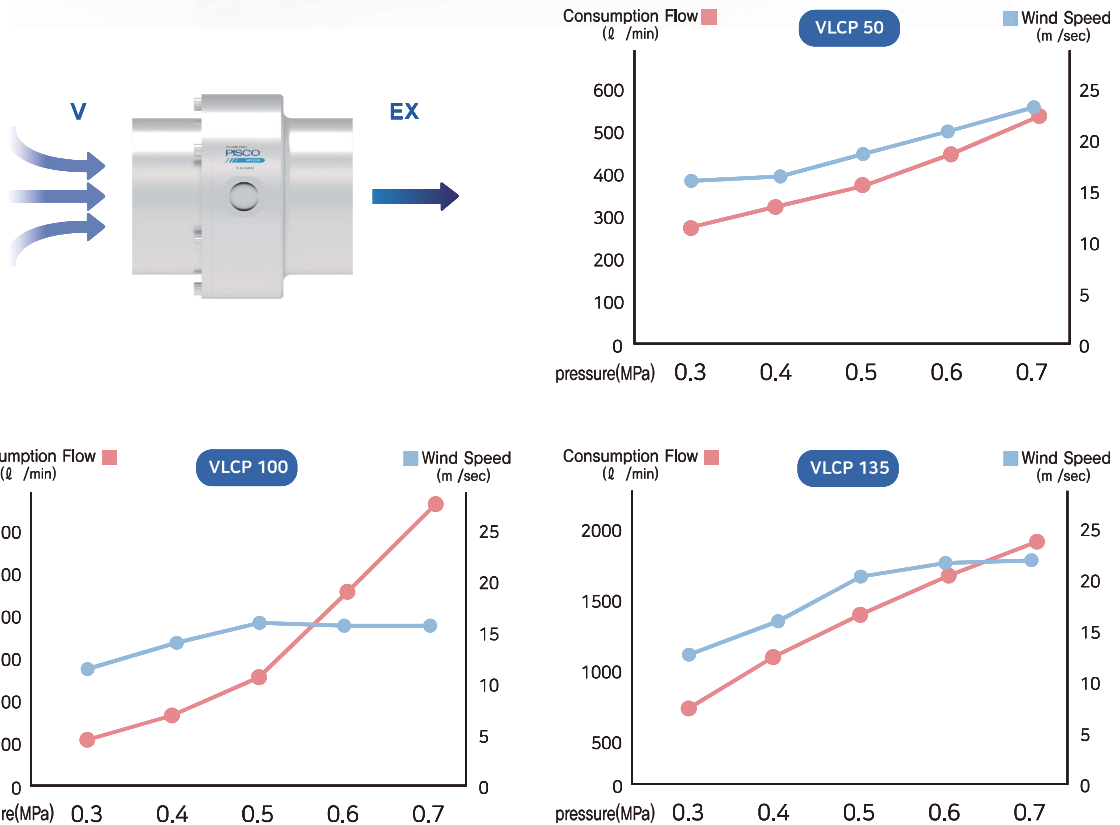
Blank	White Anodizing
S	Special coating (inside and outside)

※ Special coating is standard specification.

Construction



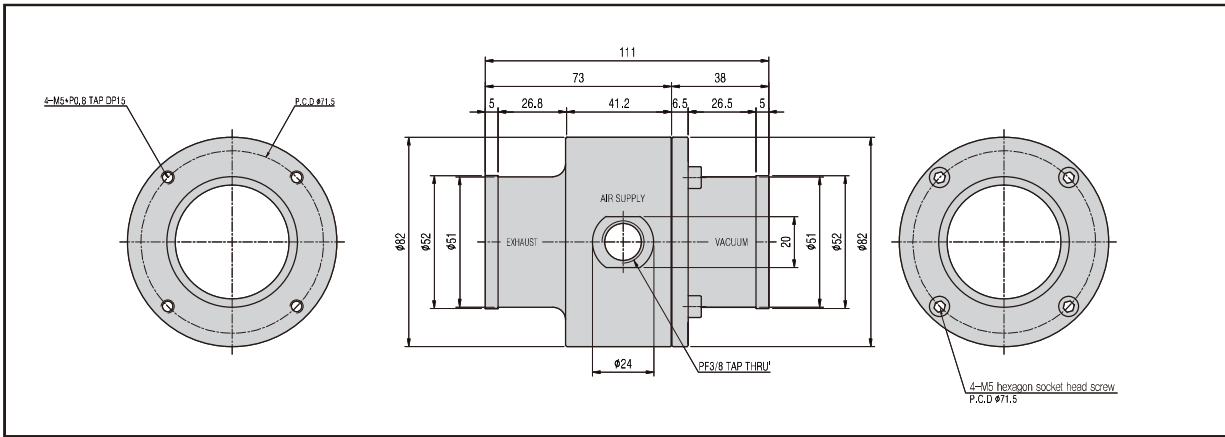
Consumption Flow / Wind Speed



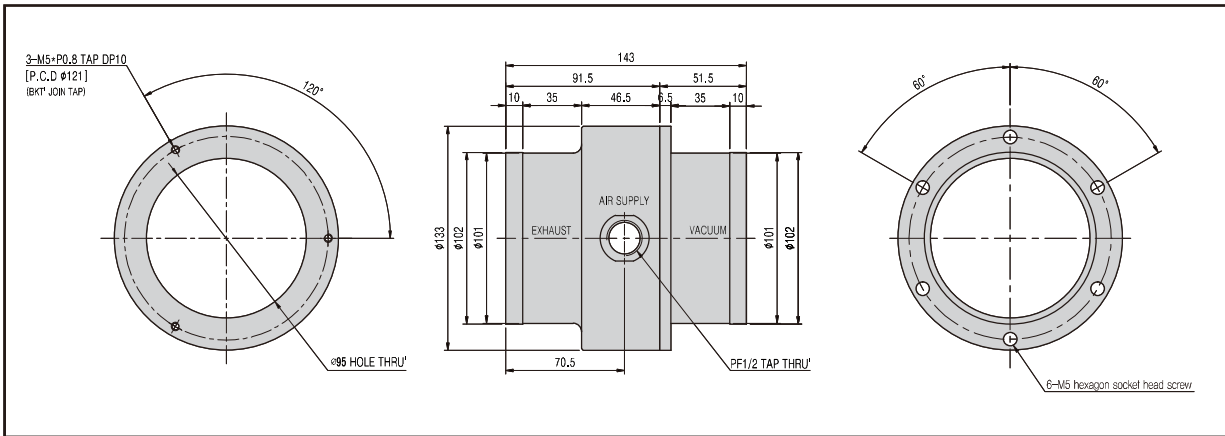
※ The above wind speed and consumption flow data are our measurement values.

Dimension (mm)

VLCP50



VLCP100



VLCP135

