

Quick Changer

Product image



Easy replacement of the EOAT on the robot.
 Suitable also with vacuum ports.
 Avoids mistakes in pneumatic and electrical connections. 4, 8, 10 or 12 pneumatic connections.
 The two parts (robot side and gripper side) are supplied separately.

Profile · SUS Tube

Stents Module

Quick Changer

Grip Module

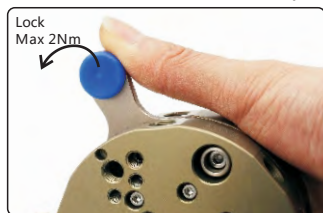
Air Nipper

Vacuum Module

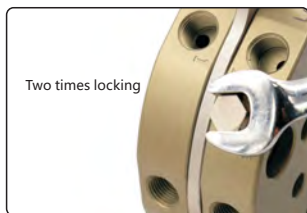
Accessory Components

Model	QC50	QC90	QC150	QC160	QC200
Medium	Filtered compressed air				
Pressure range	5~6 bar				
Temperature range	5 ~ 60 °C				
Robot side quick changer	QC-R50 QC-R50K	QC-R90 QC-R90K	QC-R150K	QC-R160K	QC-R200K
Robot side quick changer weight	103 g	318 g	1159 g	1200 g	2640 g
Gripper side quick changer	QC-G50	QC-G90	QC-G150	QC-G160	QC-G200
Gripper side quick changer weight	65 g	227 g	837g	900 g	1890 g
F	150N	400N	1000N	1000N	2000N
Mt	20Nm	100Nm	250Nm	250Nm	600Nm
Mb	10Nm	60Nm	150Nm	150Nm	300Nm
Recomended payload	5kg	15kg	35kg	35kg	75kg
Colour	Brass	Brass	Black	Brass	Black

Installation and use example



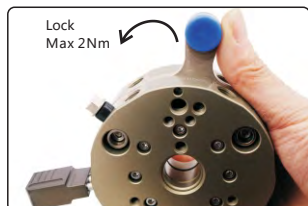
Example of Install with lock



Two times locking



Safety locking



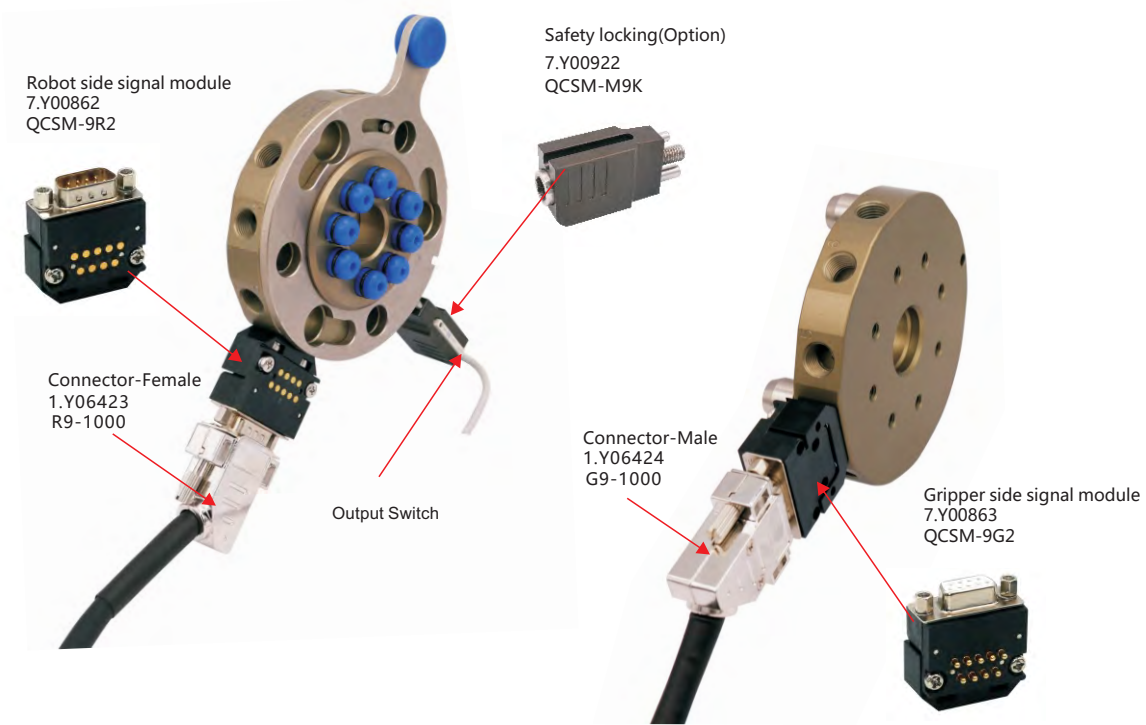
Lock Max 2Nm



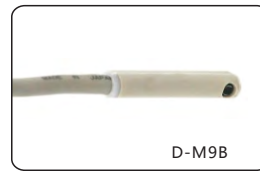
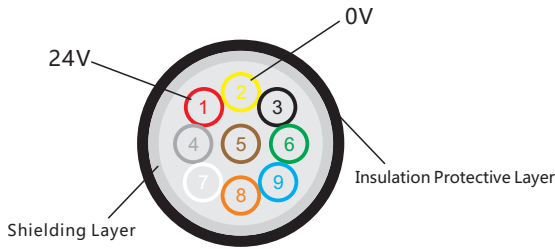
Accessories

Electrical connection module

- I/O quick change by D-SUB 9 pins connector.
- The two parts are supplied separately:
 - QCSM-9R2 robot side signal module.
 - QCSM-9G2 gripper side signal module.
 - DB9F-45 45 degree metal female fitting
 - DB9M-45 45 degree metal male fitting



Singal Wire Cross-sectional Sketch Map



P137

QCSM (Model)	9R1	9G1	9R2	9G2	9R3	9G3	9R4	9G4
PN	7.Y00823	7.Y00824	7.Y00862	7.Y00863	7.Y00819	7.Y00820	7.Y00821	7.Y00822
I/O connection type	9 pins D-SUB							
Working Current	MAX 3 A							
G9-1000 Wire-Male		✓		✓		✓		✓
R9-1000 Wire-Female	✓		✓		✓		✓	
Applicable Products	QC50		QC90	QC160	QC150		QC200	

* The wire's length is 1 meters

Quick Changer

Dimension description

Profile · SUS Tube

Stents Module

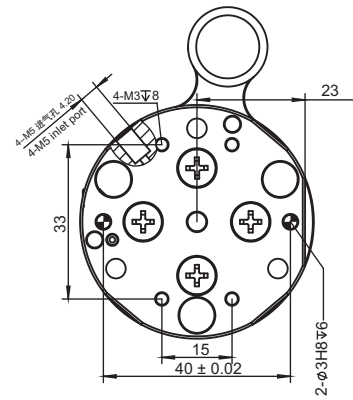
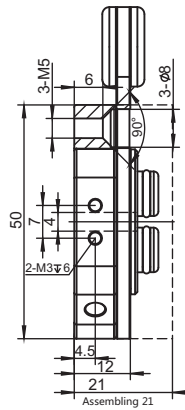
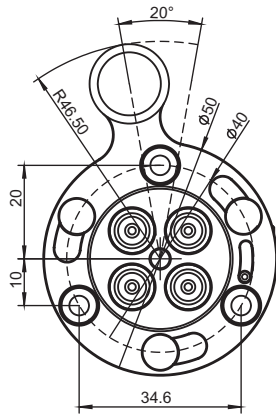
Quick Changer

Grip Module

Air Nipper

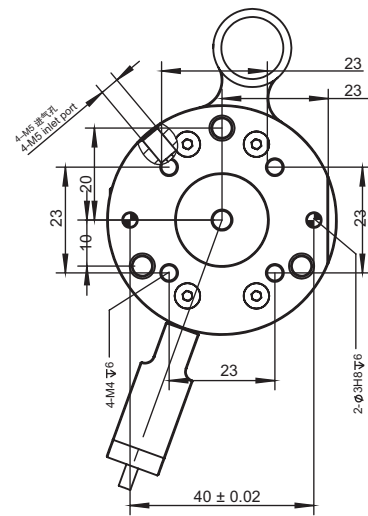
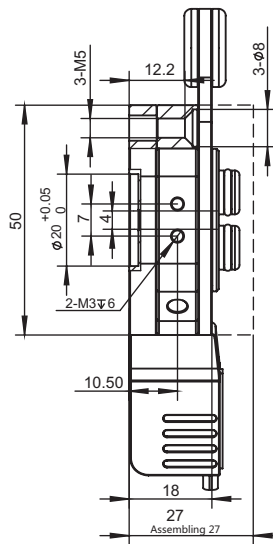
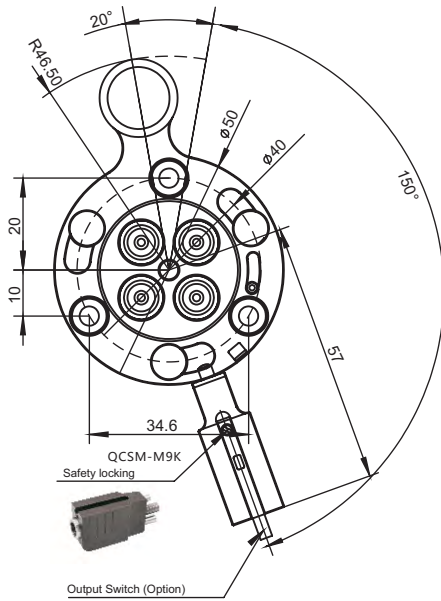
Vacuum Module

Accessory Components

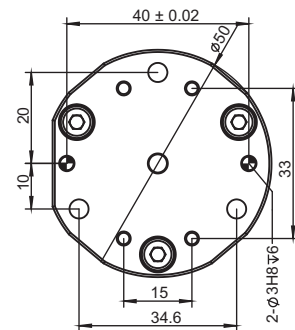
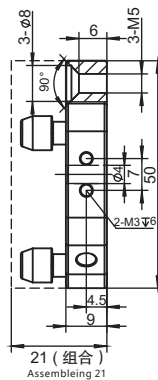
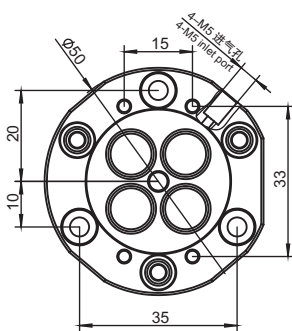


PN	8.Y00054
Model	QC-R50

NEW



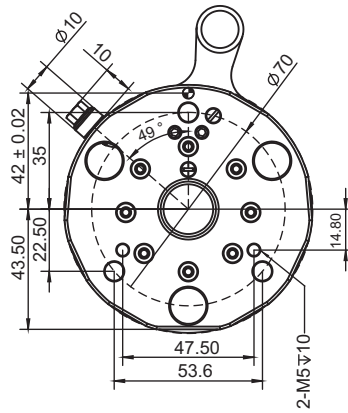
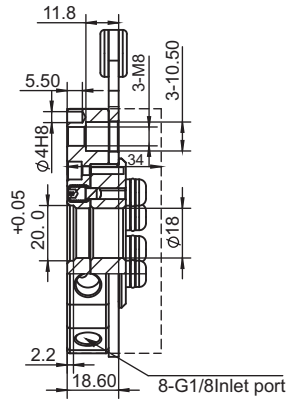
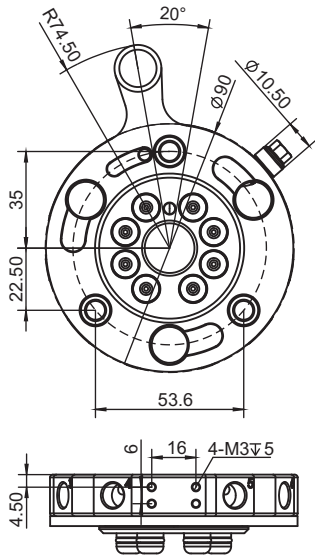
PN	8.Y00402
Model	QC-R50K



PN	8.Y00055
Model	QC-G50

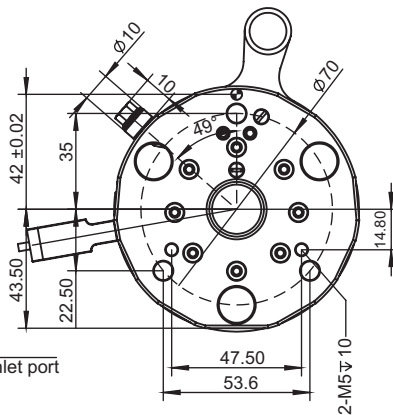
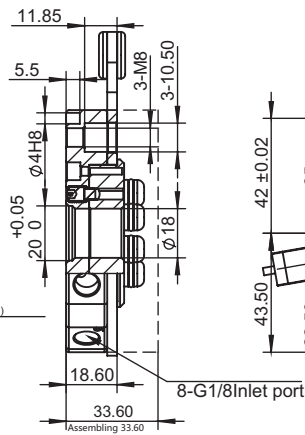
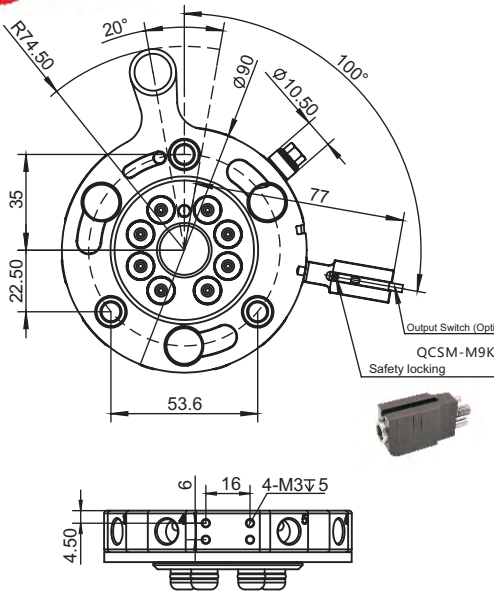
Quick Changer

Dimension description

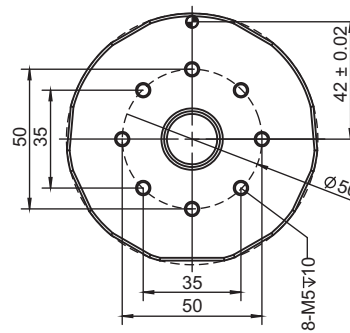
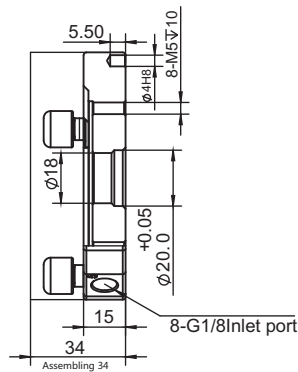
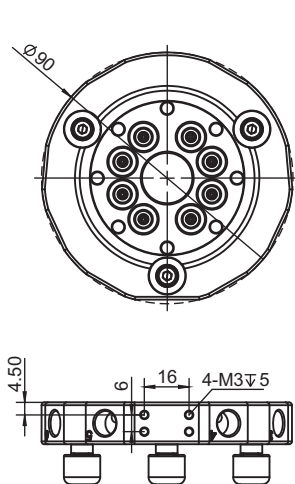


PN	8.Y00032
Model	QC-R90

NEW



PN	8.Y00359
Model	QC-R90K



PN	8.Y00033
Model	QC-G90

Profile · SUS Tube

Stents Module

Quick Changer

Grip Module

Air Nipper

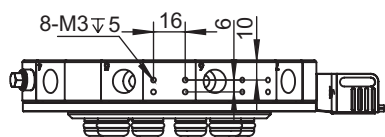
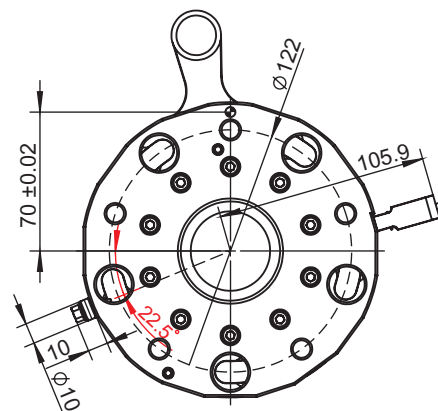
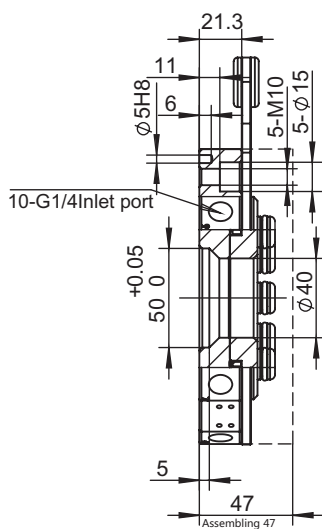
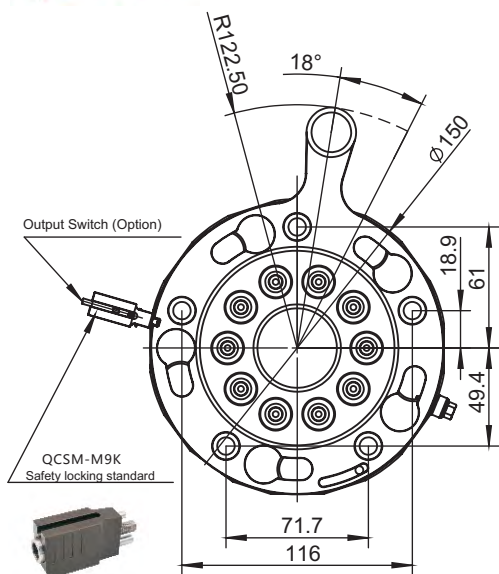
Vacuum Module

Accessory Components

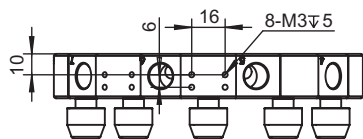
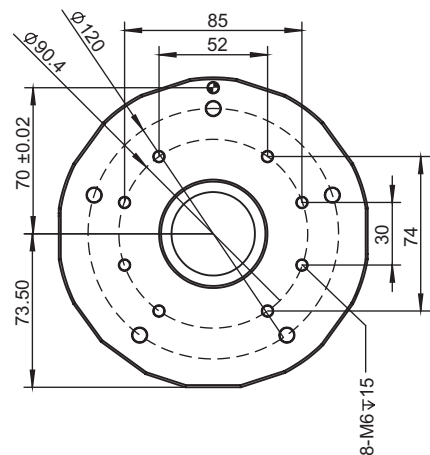
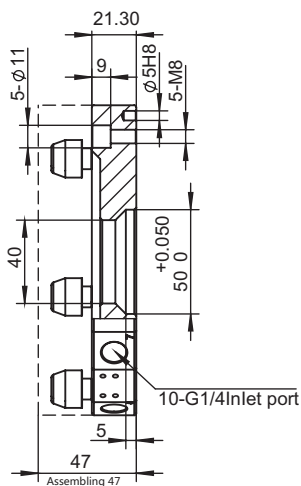
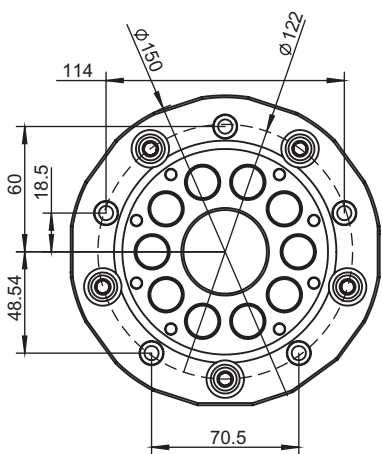
Quick Changer

Dimension description

NEW



PN	8.Y00376
Model	QC-R150K

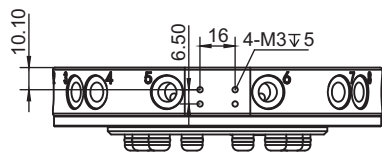
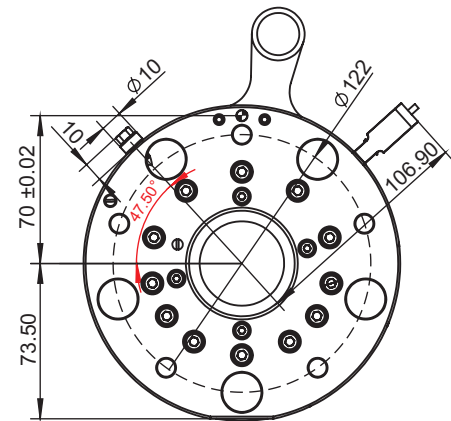
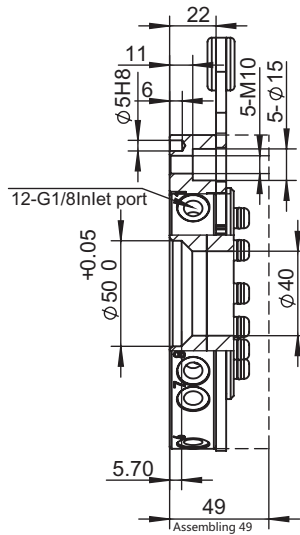
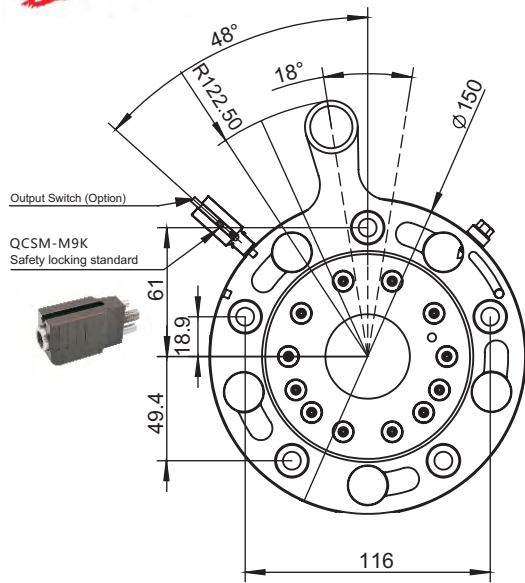


PN	8.Y00377
Model	QC-G150

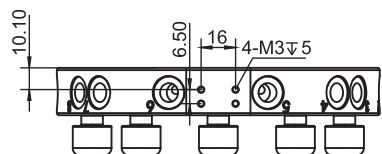
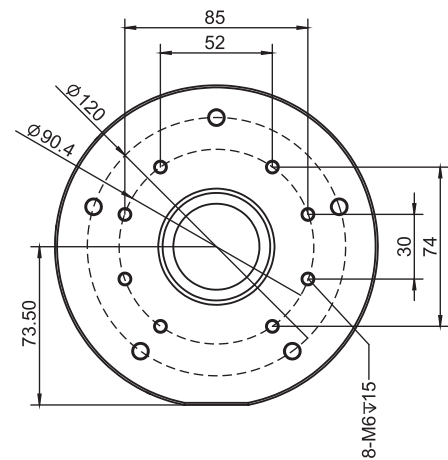
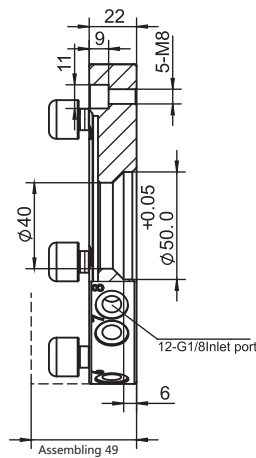
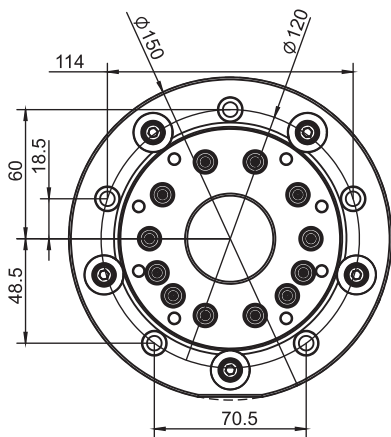
Quick Changer

Dimension description

NEW



PN	8.Y00360
Model	QC-R160K



PN	8.Y00053
Model	QC-G160

Profile · SUS Tube

Stents Module

Quick Changer

Grip Module

Air Nipper

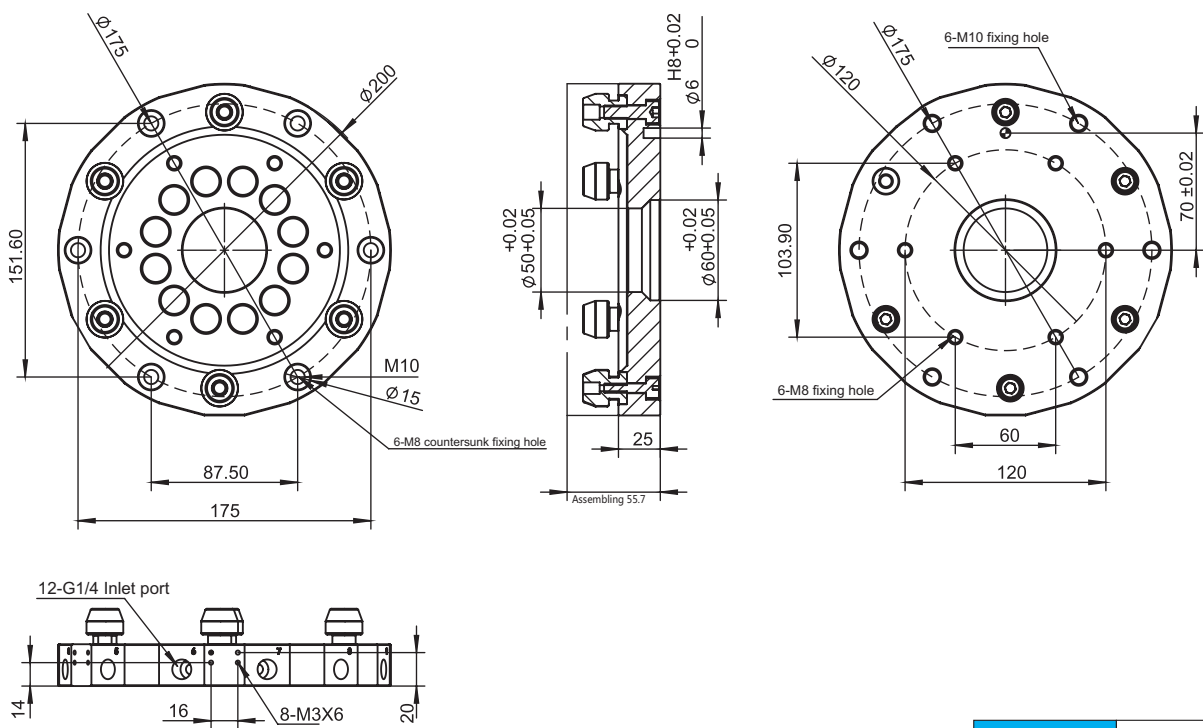
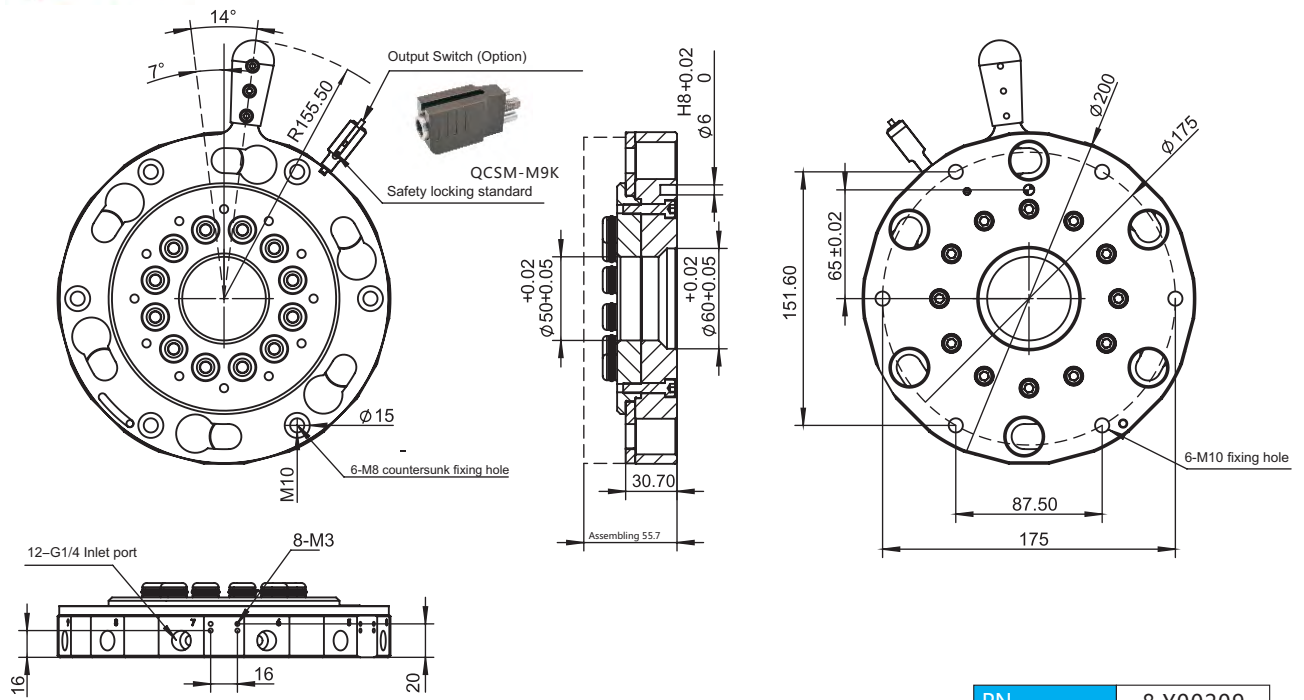
Vacuum Module

Accessory Components

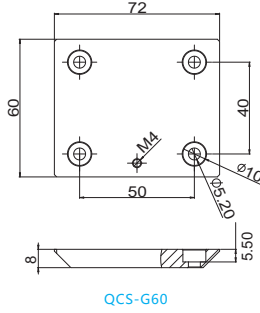
Quick Changer

Dimension description

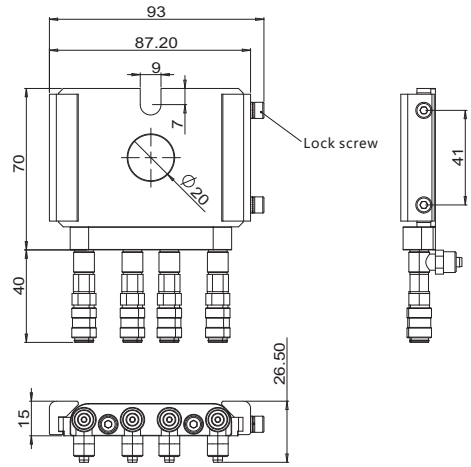
NEW



Min Quick Changer



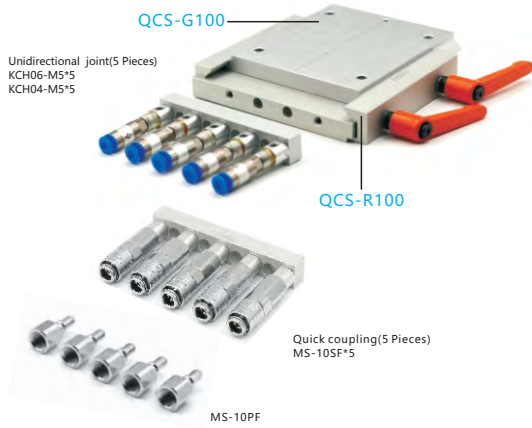
QCS-G60



QCS-R60

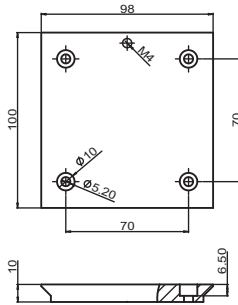
Threaded Hose Module(Optional)

PN	8.Y00081	8.Y00082	1.Y03525	1.Y03524
Model	QCS-R60	QCS-G60	KCH04-M5	KCH06-M5
Load	70N			
Weight	148g	79g	7g	9g

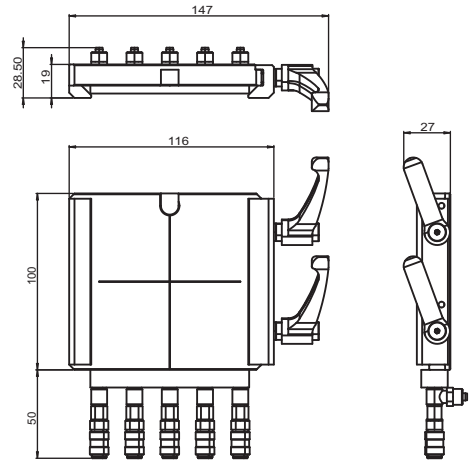


QCS-G100

QCS-R100



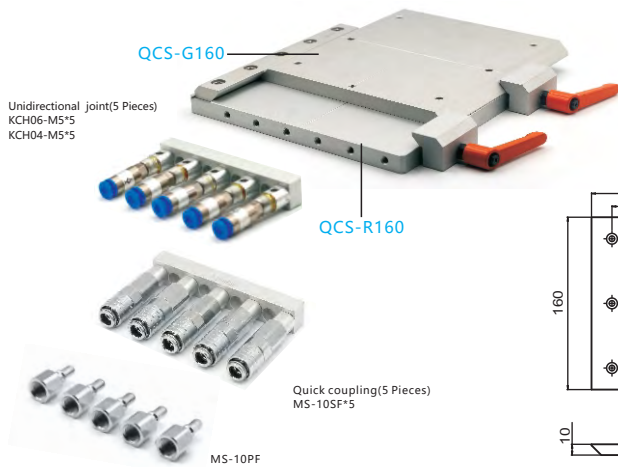
QCS-G100



QCS-R100

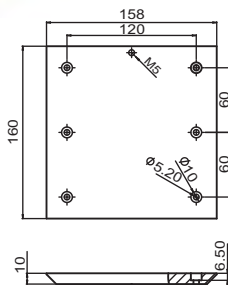
Threaded Hose Module(Optional)

PN	7.Y00332	7.Y00175	7.Y00860	7.Y00861	7.Y00334	1.Y04667
Model	QCS-R100	QCS-G100	KCH04-M5*5	KCH06-M5*5	MS-10SF*5	MS-10PF
Load	300N					
Weight	463g	240g	86g	96g	196g	11g

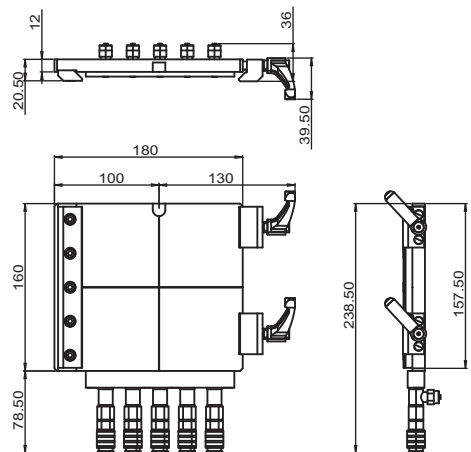


QCS-G160

QCS-R160



QCS-G160



QCS-R160

Threaded Hose Module(Optional)

PN	7.Y00160	7.Y00161	7.Y00860	7.Y00861	7.Y00334	1.Y04667
Model	QCS-R160	QCS-G160	KCH04-M5*5	KCH06-M5*5	MS-10SF*5	MS-10PF
Load	800N					
Weight	1198g	634g	86g	96g	196g	11g

Profile · SUS Tube

Stents Module

Quick Changer

Grip Module

Air Nipper

Vacuum Module

Accessory Components

Quick Changer

Profile · SUS Tube

Stents Module

Quick Changer

Grip Module

Air Nipper

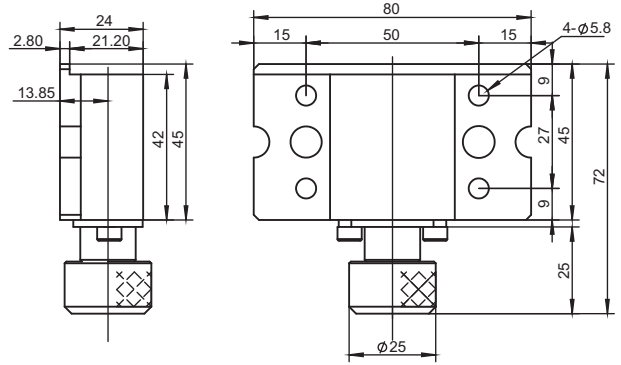
Vacuum Module

Accessory Components



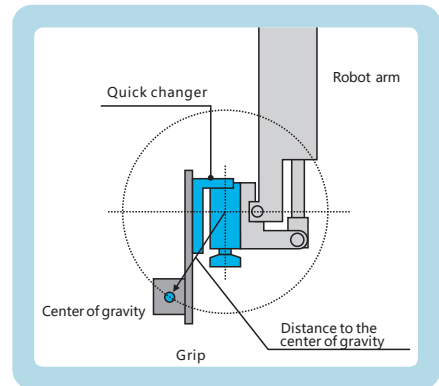
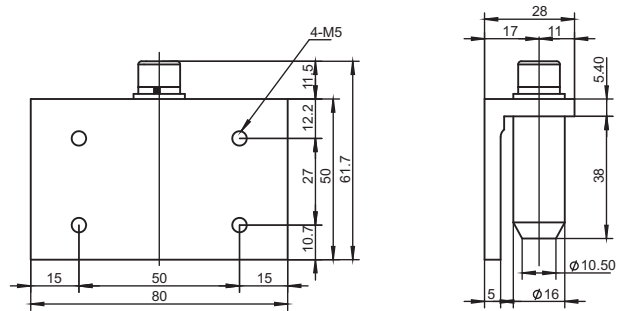
PN	1.Y01275
Model	QCL15R-Y

- ※ Superhard aluminum
- ※ Weight: 185g
- ※ Installation location: Robot side
- ※ Load weight: to 15kg



PN	1.Y01276
Model	QCL15G-Y

- ※ Steel
- ※ Weight: 294g
- ※ Installation location: Grip side
- ※ Load weight: to 15kg



Application example

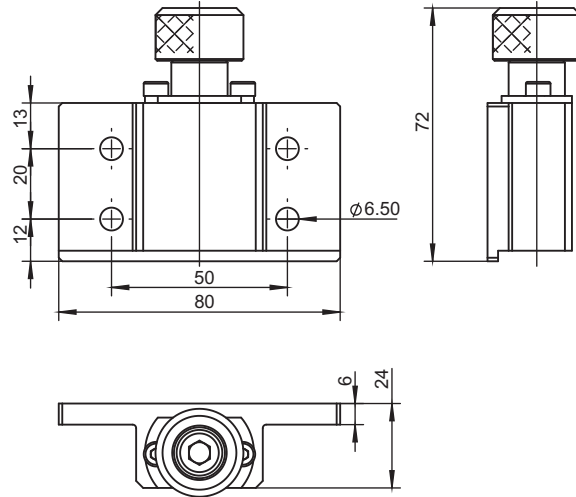


Quick Changer



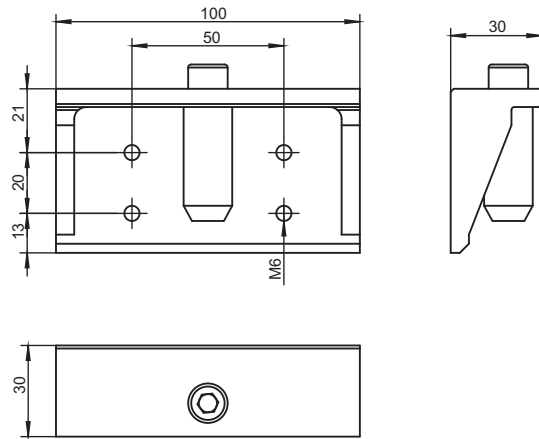
PN	8.Y00236
Model	QCL15R-S

- ※ Superhard aluminum
- ※ Weight: 190g
- ※ Installation location: Robot side
- ※ Load weight: to 15kg

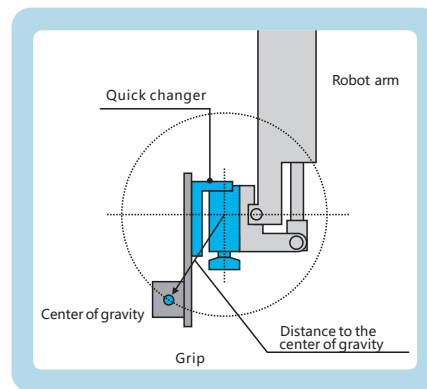


PN	8.Y00235
Model	QCL15G-S

- ※ Superhard aluminum
- ※ Weight: 197g
- ※ Installation location: Grip side
- ※ Load weight: to 15kg



Application example



Profile · SUS Tube

Stents Module

Quick Changer

Grip Module

Air Nipper

Vacuum Module

Accessory Components

Quick Changer

Profile · SUS Tube

Stents Module

Quick Changer

Grip Module

Air Nipper

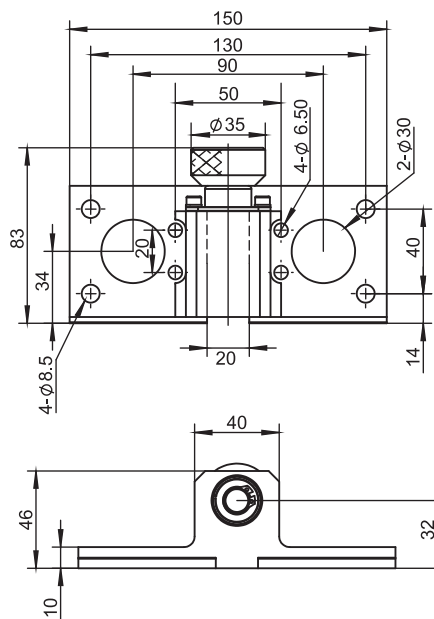
Vacuum Module

Accessory Components



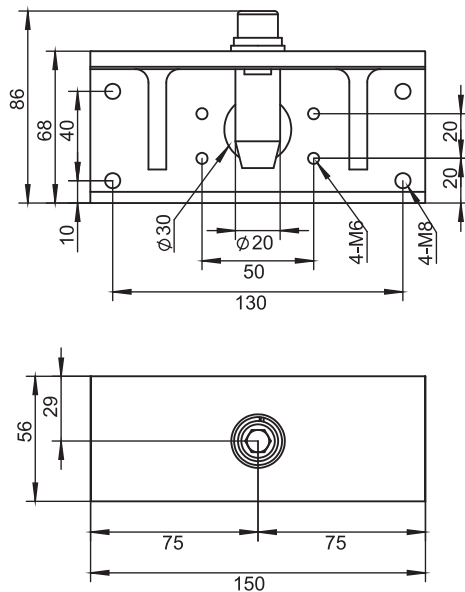
PN	8.Y00101
Model	QCL35R-S

- ※ Superhard aluminum
- ※ Weight: 505g
- ※ Installation location: Robot side
- ※ Load weight: to 35kg

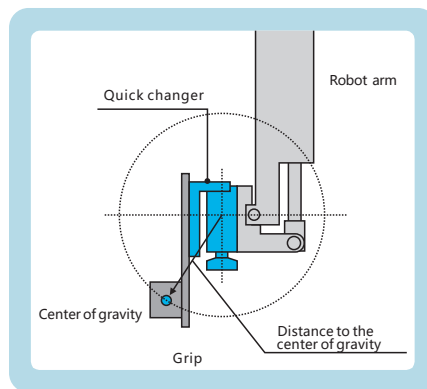


PN	8.Y00102
Model	QCL35G-S

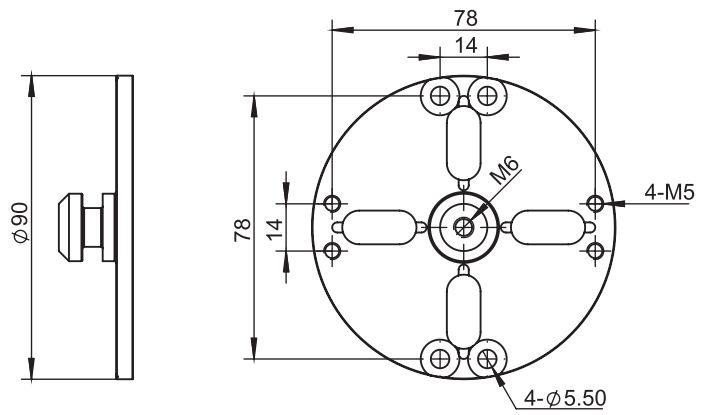
- ※ Superhard aluminum
- ※ Weight: 565g
- ※ Installation location: Grip side
- ※ Load weight: to 35kg



Application example

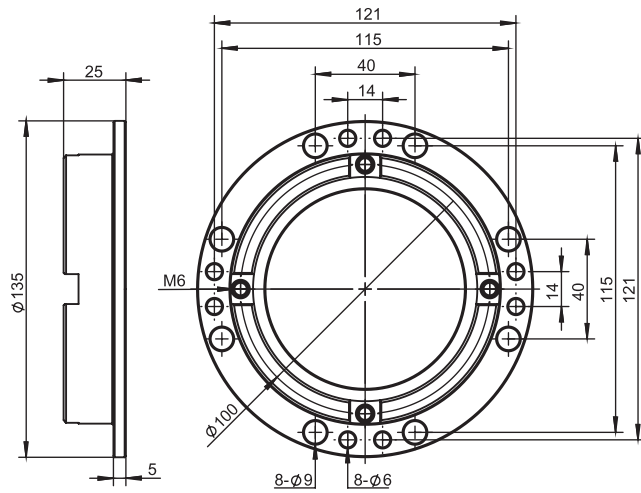


Quick Changer



PN	4.Y00480
Model	BP90

- ※ Iron products
- ※ Weight: 234g
- ※ Installation location: Grip side



PN	4.Y00497
Model	BP135

- ※ Iron products
- ※ Weight: 660g
- ※ Installation location: Grip side

Profile · SUS Tube

Stents Module

Quick Changer

Grip Module

Air Nipper

Vacuum Module

Accessory Components

Quick Changer

Profile · SUS Tube

Stents Module

Quick Changer

Grip Module

Air Nipper

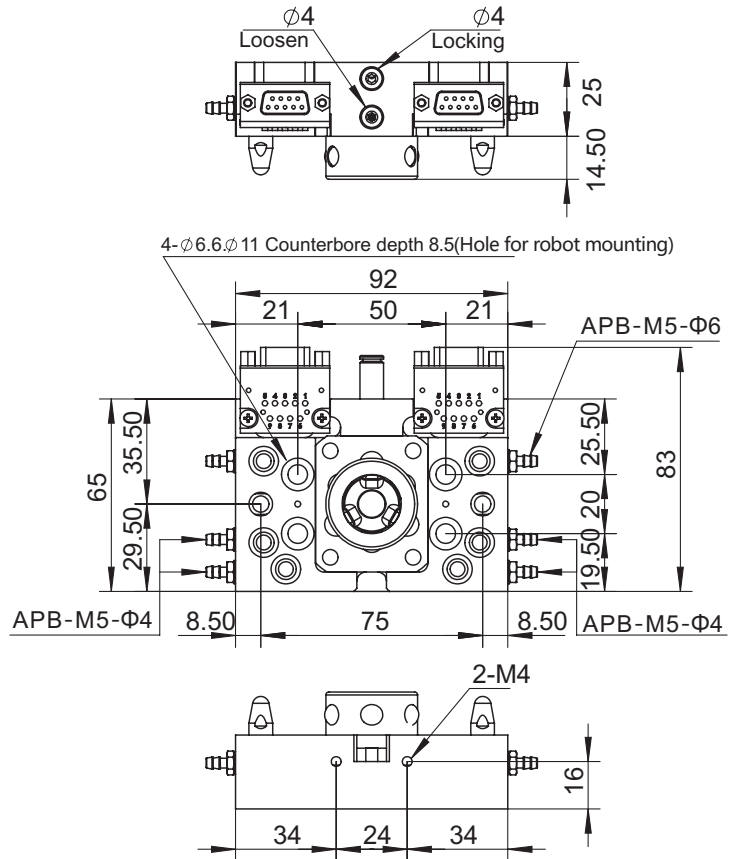
Vacuum Module

Accessory Components



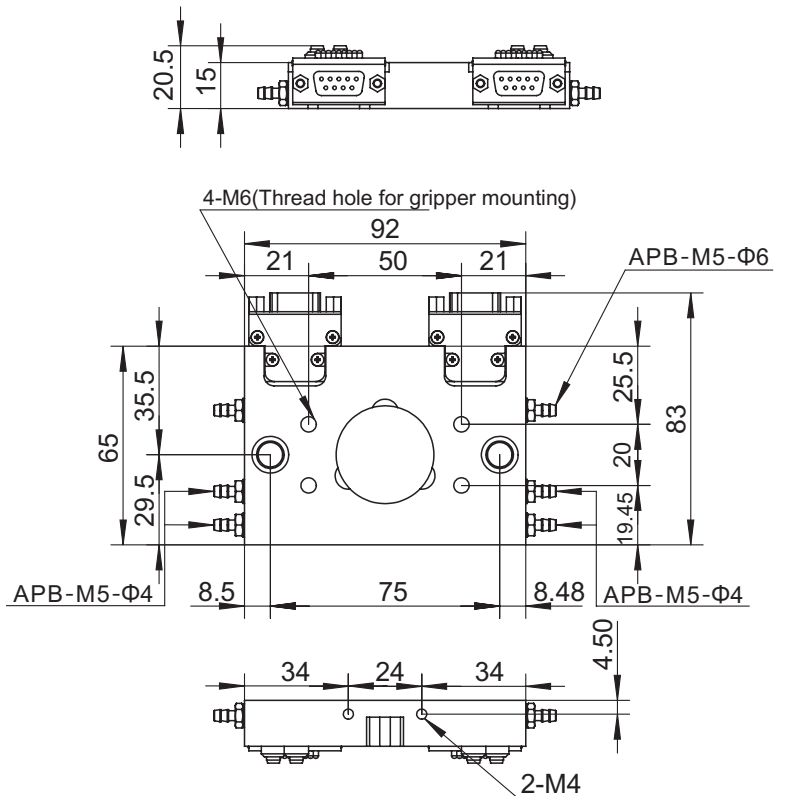
PN	8.Y00037
Model	QCA-S10R

※Installation location: Robot side
 ※Weight: 466g
 ※Load weight: to 10kg



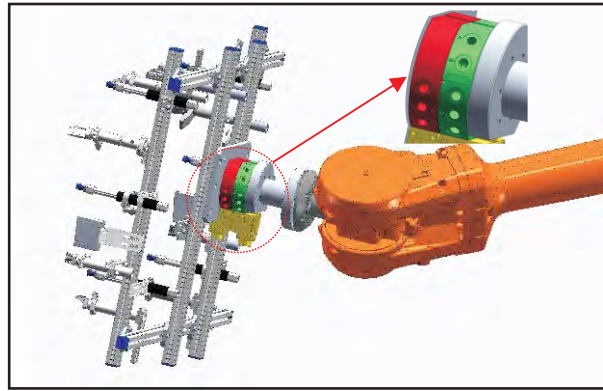
PN	8.Y00038
Model	QCA-S10G

※Installation location: Grip side
 ※Weight: 230g
 ※Load weight: to 10kg

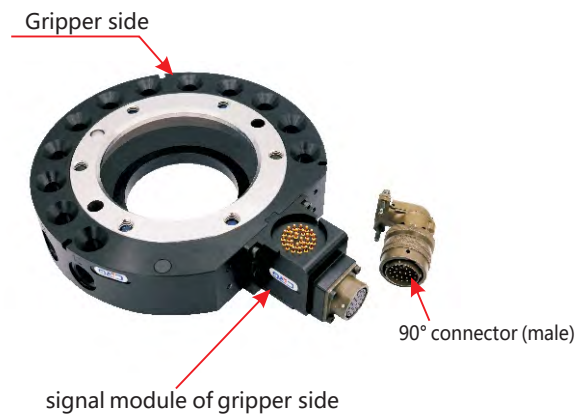
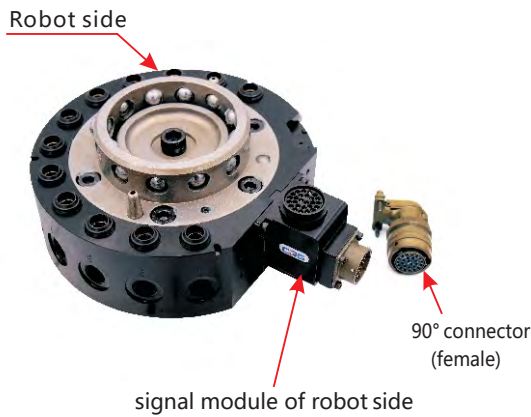


Quick Changer

NEW



Quick Changer Installation example

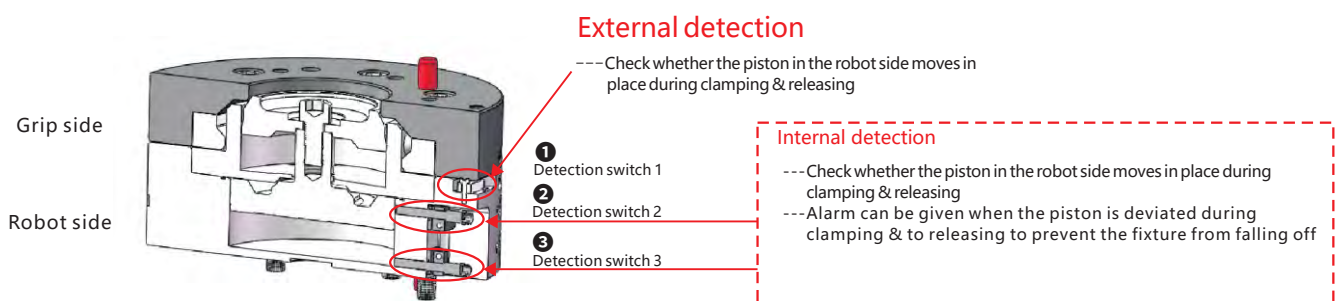


Product name	QCA50	QCA200
Recommended payload	50kg	200kg
Gas path	9 - G 1/8	12 - G 3/8

Signal module	Robot side		Grip side		90° connector (female)		90° connector (male)	
	Model	QCSM-26R	QCSM-19R	QCSM-26G	QCSM-19G	PT08SE16-26S	PT06E14-19S	PT08SE16-26P
PN	7.Y00464	7.Y00954	7.Y00465	7.Y00955	1.Y07209	1.Y09414	1.Y07210	1.Y09413
I/O connection type	26 pins	19 pins	26 pins	19 pins	26 pins	19 pins	26 pins	19 pins
Working Current	MAX 20A							
Applicable Products	QCA50 QCA200							

Safety capability (option)

Three safety capability switch, multiple protection



Profile · SUS Tube

Stents Module

Quick Changer

Grip Module

Air Nipper

Vacuum Module

Accessory Components

Quick Changer

Profile · SUS Tube

Stents Module

Quick Changer

Grip Module

Air Nipper

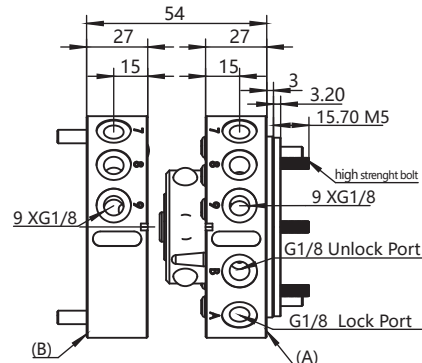
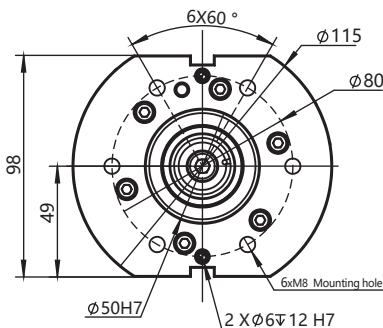
Vacuum Module

Accessory Components

NEW



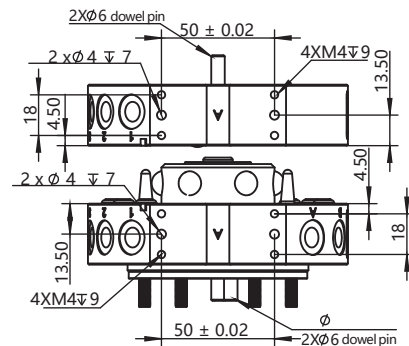
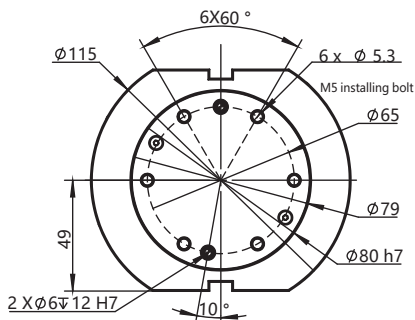
Robot side



PN	8.Y00349
Model	QCA-50R



Grip side



PN	8.Y00350
Model	QCA-50G

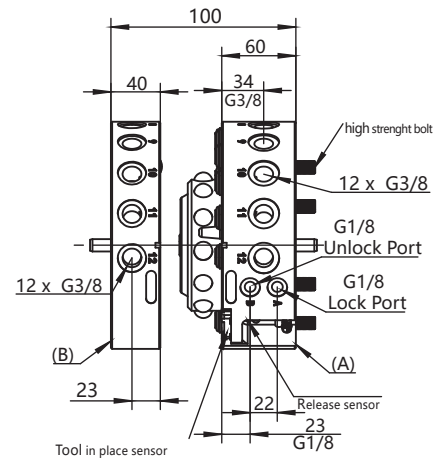
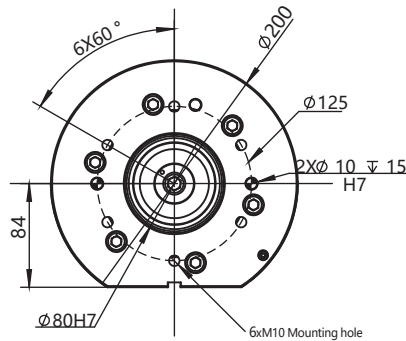
- 1.Recommended rated load:50kg
- 2.Locking Force@80Psi (5.5Bar) 4600 N
- 3.Static Load torque (X&Y) : 165 Nm
- 4.Static Load torque (Z) : 226 Nm
- 5.Position repeatability (X,Y&Z): 0.015 mm
- 6.Weight after locked:1.68 kg
- 7.Robot side's weight:1.08 kg
- 8.Grip side's weight:0.6 kg
- 9.Maximum allowable angle migration±1°
- 10.Under (6 Bar) pressure, the max clearance is 3 mm between Robot side and tooling side before lock.
- 11.Size of straight air hole (quantity):(9) 1/8

Quick Changer

NEW



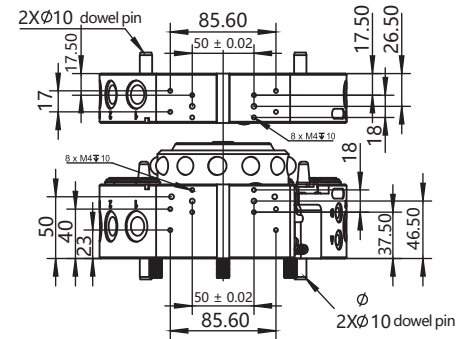
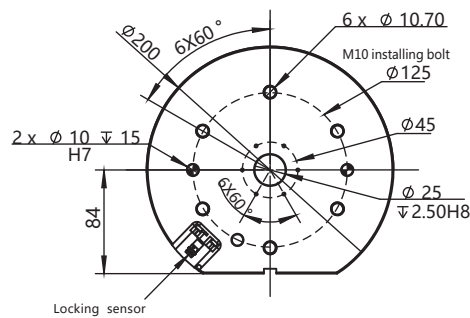
Robot side



PN	8.Y00272
Model	QCA-200R



Grip side



PN	8.Y00357
Model	QCA-200G

- 1.Recommended rated load:200kg
- 2.Locking Force@80Psi (5.5Bar) 16000 N
- 3.Static Load torque (X&Y) : 1360 Nm
- 4.Static Load torque (Z) : 1130 Nm
- 5.Position repeatability (X,Y&Z):0.015 mm
- 6.Weight after locked: 9 kg
- 7.Robot side's weight:6.2 kg
- 8.Grip side's weight:2.8 kg
- 9.Maximum allowable angle migration±1°
- 10.Under (6 Bar) pressure, the max clearance is 2 mm between Robot side and tooling side before lock.
- 11.Size of straight air hole (quantity):(12) 1/8
- 12.Signal Module: 26pin

Profile · SUS Tube

Stents Module

Quick Changer

Grip Module

Air Nipper

Vacuum Module

Accessory Components