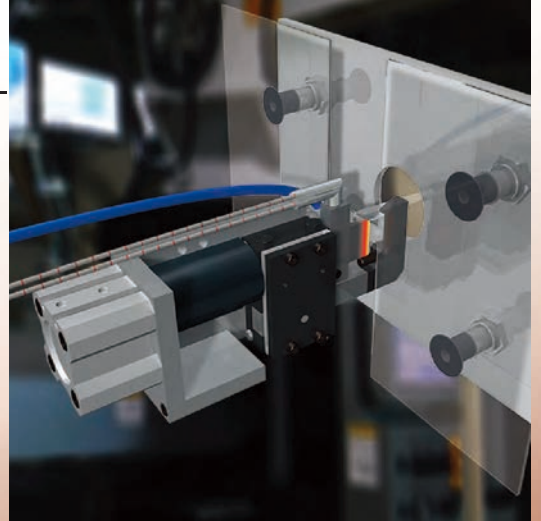
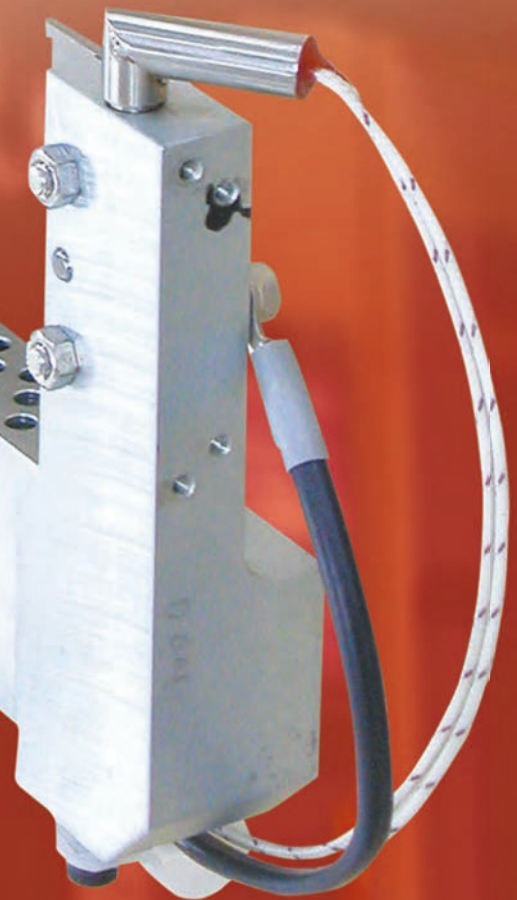
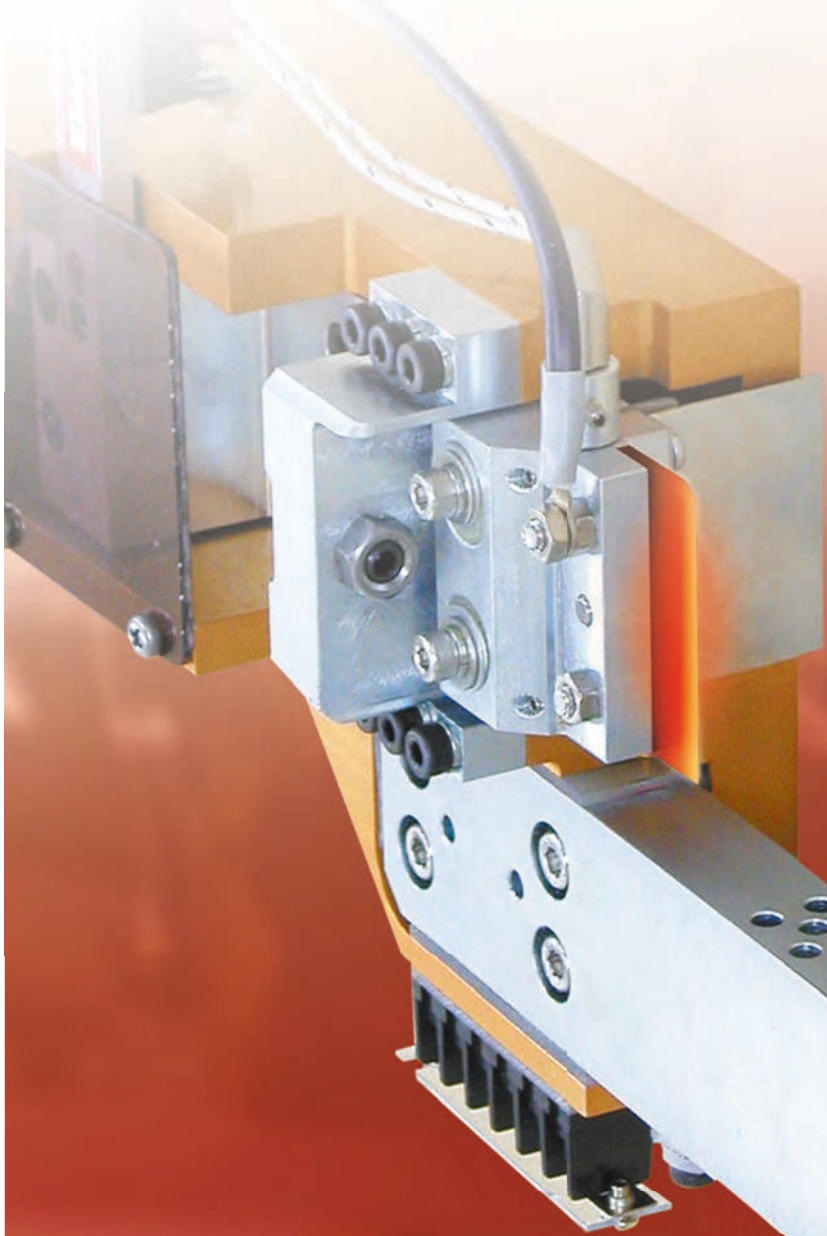


Servo Heat Nippers



These air nippers are connected to a heater to suppress cracks and whitening of clear materials such as acrylic. The gate is slowly melted as it's cut, resulting in a clean, unblemished cut surface.

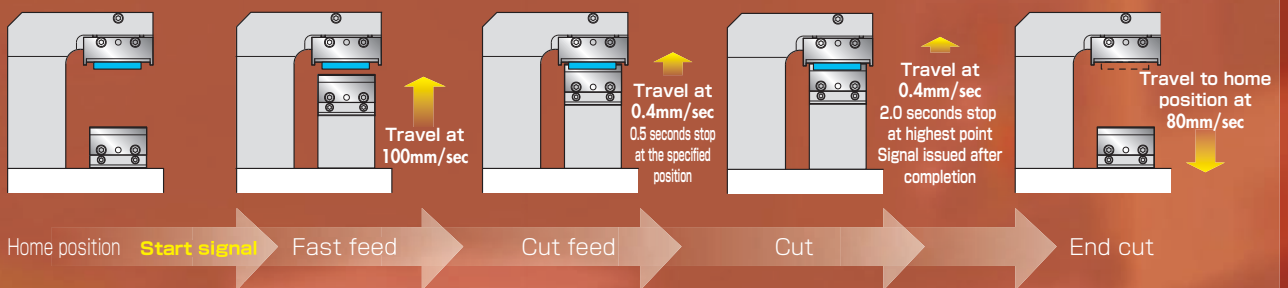


Various setting with this dedicated controller



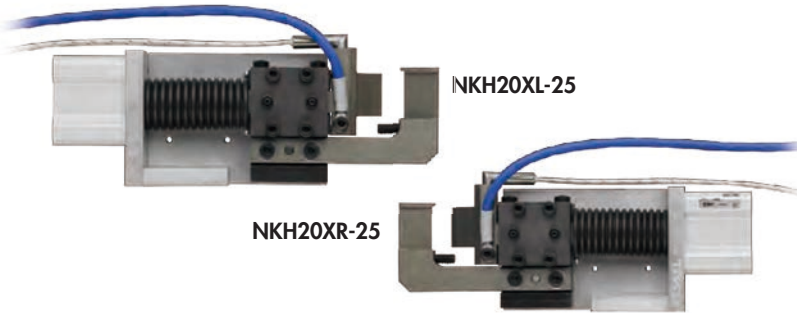
VCTC-33 (optionally available)

Practical example of gate-cut



No. NKH20XL-25/NKH20XR-25 Air-hydro nippers (thrust cut type) **NEW**

- Highly durable PTFE Plating blades; melted resin does not adhere to them.
- Improved durability of blades with High-Speed chip brazed.
- Easier blade replacement than conventional models; take out the blade unit and exchange with the new one.



- Requires separately sold Hydro Controller.
- Custom-made blade lengths and cylinder capacities available.

Model No.	Cutting Capacity width × thickness (mm) Acrl	Blade Edge Temp. (MAX °C)	Air Consumption (cni /str.)	Piston Stroke (mm)	Weight (g)	EDP No.
NKH20XL-25 /20XR-25	10×1.5	180	60	10	690	—

- Working air hose inner diameter: 4 mm · Air Pressure: 0.6MPa
- ※The above weight is the product only. The weight of heater and sensor is not included.
- ※A heater for 200V AC, 220V AC, and 240V AC respectively can be made-to-order.
- ※The following specifications can be made on request: change in blade length; replacement of cylinder for improvement in performance; additional KINECHEK which does not require a hydro converter (oil).
- Accessory heater: HTL-28.5-6.25-300L-80W1H (80W/100V AC) Recommended operating temperature 140°C, Cord length 300mm, Weight 13g
- Accessory temperature sensor: SNO-300L-H (K thermocouple) , Recommended operating temperature 140°C, Cord length 300mm, Weight 7g

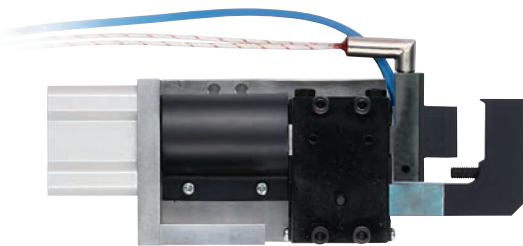
Blades Specifications

Material	Blade Shape	Blade Opening (mm)	Cutting blade effective (mm)	Weight (g)
Special alloy steel	Knife type (resin)	10	20	125

- Option Parts**
- Hydro-converter (Recommended: KOGANEI AHC 32×50)
Working fluid: Petroleum hydraulic fluid or turbine oil with antifoaming agent additive (VG22~100)
 - Temperature controller (DTC-001)

No. NKH20A/20AR Air-hydro nippers (thrust cut type)

- Air-hydro cylinders produce high power from air and oil.
- Ideal for high precision cutting of products such as optical resin lenses.



- Requires separately sold Hydro Controller.
- Custom-made blade lengths and cylinder capacities available.

Model No.	Cutting Capacity width × thickness (mm) Acrl	Blade Edge Temp. (MAX °C)	Air Consumption (cni /str.)	Piston Stroke (mm)	Weight (g)	EDP No.
NKH20A-25 /20AR-25	10×1.5	180	60	10	720	—

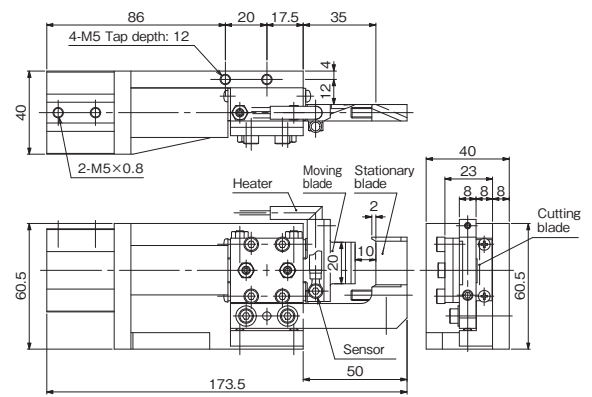
- Included heater · Included temperature sensor · Air Pressure: 0.6MPa
- Working air hose inner diameter: 4 mm
- ※A heater for 200V AC and 240V AC respectively can be made-to-order.

Blades Specifications

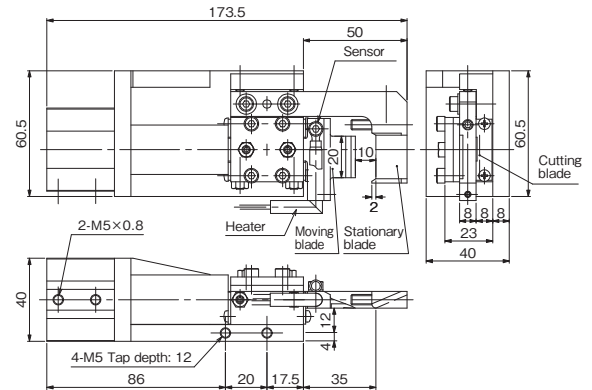
Material	Blade Shape	Blade Opening (mm)	Cutting blade effective (mm)	Weight (g)
Special alloy steel	Knife type (resin)	10	19	125

- Option Parts**
- Hydro-converter (Recommended: KOGANEI AHC 32×50)
Working fluid: Petroleum hydraulic fluid or turbine oil with antifoaming agent additive (VG22~100)
 - Temperature controller (DTC-001)

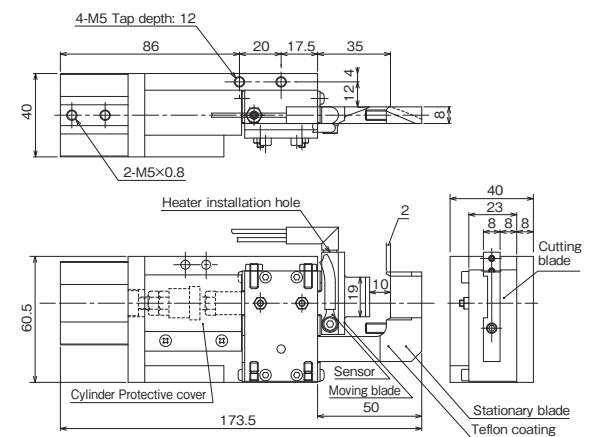
NKH20XL-25



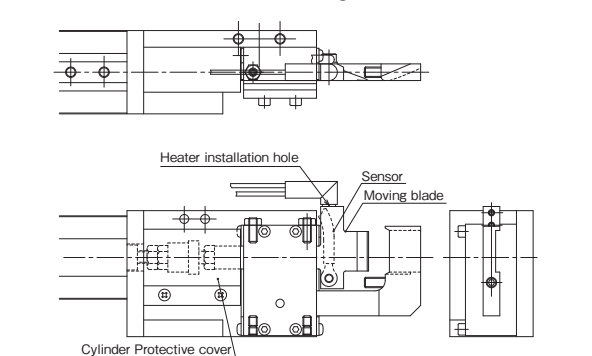
NKH20XR-25



NKH20A-25 (Forward-facing blades)

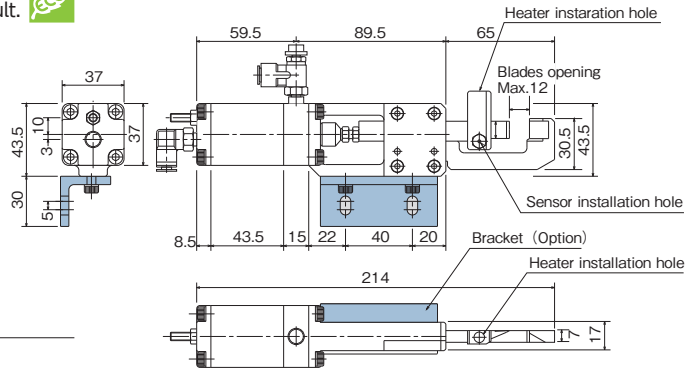
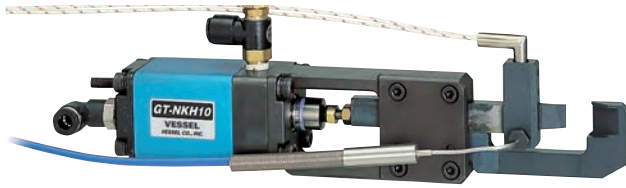


NKH20AR-25 (Backward-facing blades)



No. GT-NKH10 Heat Air Nippers

- Speed control of cutting speed and heater temperature allows for various cutting surface solutions and meets demands for high precision cutting result.



Model No.	Cutting Capacity width x thickness (mm) Acril	Blade Edge Temp. (MAX. °C)	Cutting Cycle (sec./cut)	Air Consumption (cm ³ /str.)	Piston Stroke (mm)	Weight (g)	EDP No.
GT-NKH10	7×1.5	200	4~5	73	12	715	360643 (w/NKH10AJ)
							360644 (w/NKH10RAJ)

- Included heater
- Included temperature sensor
- Air Pressure: 0.5~0.6MPa

Blades Specifications

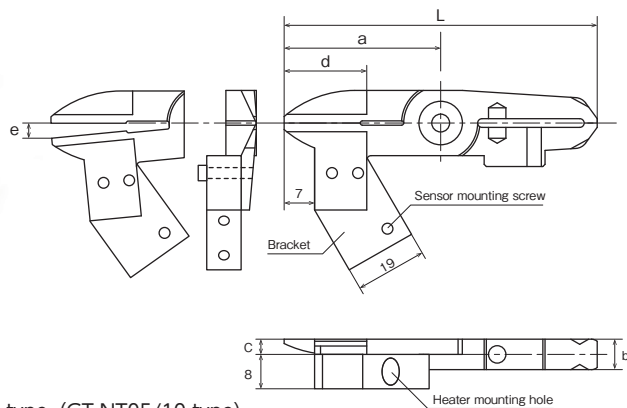
Model No.	Material	Blade Shape	Blade Opening (mm)	Cutting blade effective (mm)	Weight (g)	EDP No.
NKH10AJ	Special alloy steel	Knife type (resin)	12	10	137	360548
NKH10RAJ						360549

- Option Parts · Temperature controller (DTC-001)

No. NTH05AJ/10AJ Heat air nipper Blade

- Plastic ● One blade is fixed in position, facilitating easy gate alignment. In addition, a slide function presses the product into position.

Example of blade mounting



- Use these blades in combination with the Sliding Air Nippers vertical type (GT-NT05/10 type) .
- For the main unit dimensions, see the Sliding Air Nippers vertical type on P186.

Model No.	Size (mm)						Weight (g)	Cutting Capacity φ (mm) Acrylic	Set temperature (MAX. °C)	Material	Applicable models	EDP No.
	a	b	c	d: Effective Length	e: Blade opening	L						
NTH05AJ	36	7	3.5	15	3.5	72	40	2.5	200	Special alloy steel	GT-NT05(-4)/GT-NT05R(-4)	360546
NTH10AJ	47	9	4.7	17	4.5	94	88	3.5	200	Special alloy steel	GT-NT10(-6)/GT-NT10R(-6)	360547

The above information on weight does not include heater or sensor.

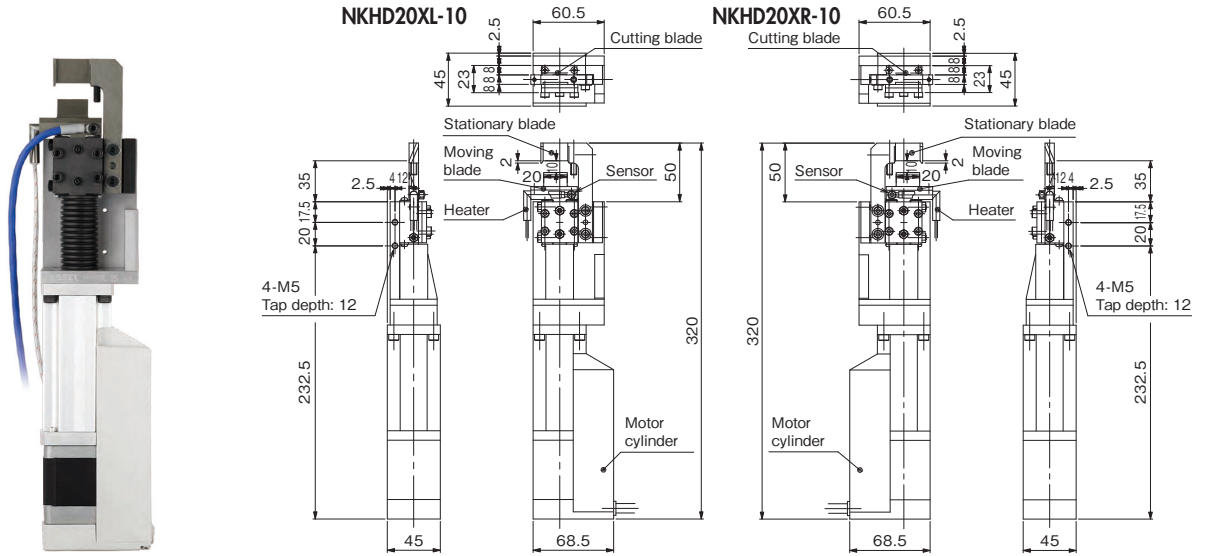
The following parts are not provided; purchase them separately.

- Special heater (80 W/120 V, cord length: 300 mm) , temperature sensor (type-K thermocouple, cord length: 1,000 mm) , speed controller, and bracket (for heater mounting)

- Option Parts · Temperature controller (DTC-001)

No. NKHD20XL/NKHD20XR Servo Heat Nipper (with Electric Cylinder) **NEW**

- Blade travel distance and speed can be easily programmed.
- Servo motor ensures delicate blade feeding and quiet gate cutting.
- Improved durability of blades with high speed chip brazed.
- Easier blade replacement than conventional models; take out the blade unit and exchange with the new one.



Model No.	Cutting Capacity width × thickness φ (mm) Acril	Blade Edge Temp. (MAX °C)	Blade Opening (mm)	Cutting Blade effective (mm)	Max. Thrust (N)	Max. Speed (mm /s)	Positioning Points (pts)	Power Supply Voltage	Current Consumption Power Control circuit	Weight (kg)	EDP No.
NKHD20XL-10 /20XR-10	10×1.5	180	10	20	100	400	16	DC24V±10%	2.0A	1.57	—

※The above weight is the product only. The weight of heater and sensor is not included. ※A heater for 200V AC, 220V AC, and 240V AC respectively can be made-to-order.
 ※The following specifications can be made on request: change in blade length; replacement of cylinder for improvement in performance; additional KINECHECK which does not require a hydro converter (oil).
 · Accessory heater: HTL-28.5-6.25-300L-80W1H (80W/100V AC) Recommended operating temperature 140°C, Cord length 300mm, Weight 13g
 · Accessory temperature sensor: SNO-300L-H (K thermocouple) , Recommended operating temperature 140°C, Cord length 300mm, Weight 7g

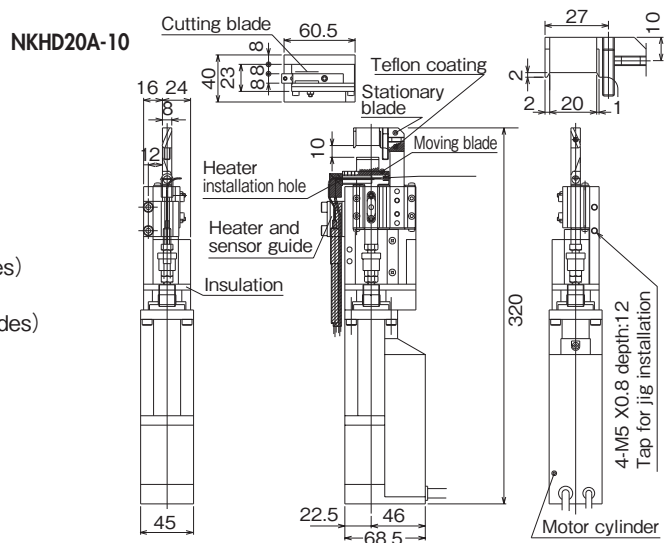
Option Parts · Temp. controller (DTC-001) · Power supply · Heater code · Parallel cable · ADP cable · Controller (CTC-33) · Power cord · Sensor cord
 For the options noted above, contact us because required items or the numbers of them may change depending on the installation method, use details, etc. of servo heat nippers.

No. NKHD20A(R) Servo Heat Nipper (with Electric Cylinder)

- Blade travel distance and speed can be easily programmed.
- Servo motor ensures delicate blade feeding and quiet gate cutting.



Compact type
NKHD20A-10
 (Forward-facing blades)
NKHD20AR-10
 (Backward-facing blades)



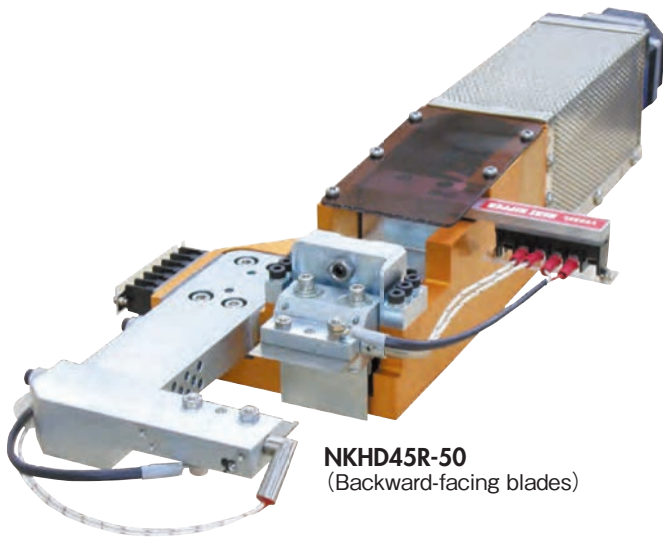
Model No.	Cutting Capacity width × thickness φ (mm) Acril	Blade Edge Temp. (MAX °C)	Blade Opening (mm)	Cutting Blade effective (mm)	Max. Thrust (N)	Max. Speed (mm /s)	Positioning Points (pts)	Power Supply Voltage	Current Consumption Power Control circuit	Weight (kg)	EDP No.
NKHD20A(R)-10	10×1.5	180	10	19	100	400	16	DC24V±10%	2.0A	1.6	—

※A heater for 200V AC and 240V AC respectively can be made-to-order.
 · Accessory heater: HTL-28.5-6.25-300L-80W1H (80W/100V AC) Recommended operating temperature 140°C, Cord length 300mm
 · Accessory temperature sensor: SNO-300L-H (K thermocouple) , Recommended operating temperature 140°C, Cord length 300mm

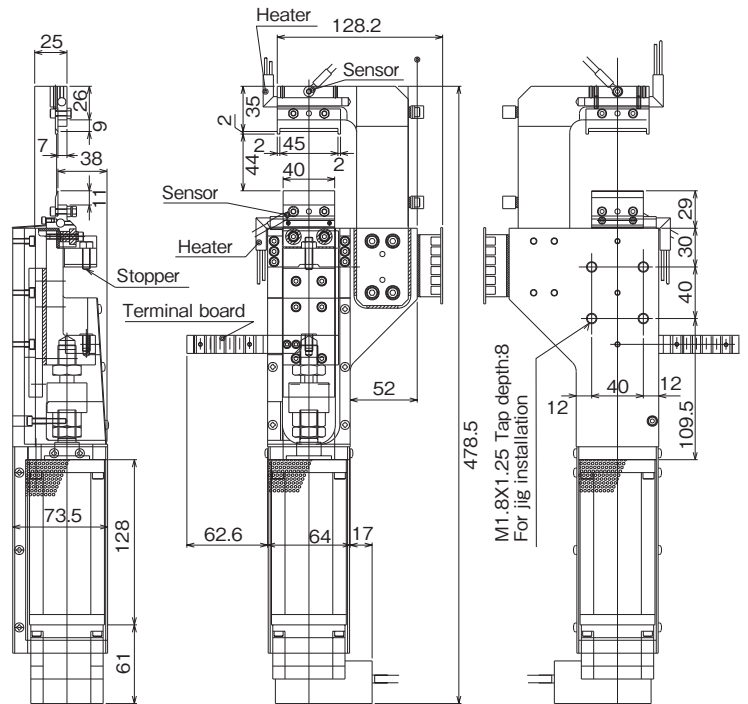
Option Parts · Temp. controller (DTC-001) · Power supply · Heater code · Parallel cable · ADP cable · Controller (CTC-33) · Power cord · Sensor cord
 For the options noted above, contact us because required items or the numbers of them may change depending on the installation method, use details, etc. of servo heat nippers.

No. NKHD45R Servo Heat Nippers (With Motor Cylinder)

- Blade travel distance and speed can be easily programmed.
- Servo motor ensures delicate blade feeding and quiet gate cutting.



NKHD45R-50
(Backward-facing blades)



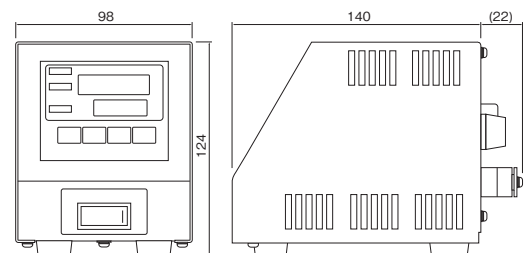
Model No.	Cutting Capacity width x thickness ϕ (mm) Acril	Blade Edge Temp. (MAX. °C)	Blade Opening (mm)	Cutting Blade effective (mm)	Max. Thrust (N)	Max. Speed (mm /s)	Positioning Points (pts)	Power Supply Voltage	Current Consumption Power	Control circuit	Weight (kg)	EDP No.
NKHD45R-50	24x1.2	180	46	40	500	100	16	DC24V±10%	3.0A	0.2A	5	—

※A heater for 200V AC and 240V AC respectively can be made-to-order.
 · Accessory heater: Recommended operating temperature 140°C
 · Accessory temperature sensor: Recommended operating temperature 140°C

Option Parts · Temp. controller (DTC-001) · Power supply · Heater code · Parallel cable · ADP cable · Controller (CTC-33) · Power cord · Sensor cord
 For the options noted above, contact us because required items or the numbers of them may change depending on the installation method, use details, etc. of servo heat nippers.

No. DTC-001 Benchtop Temperature Controller

- The heating element can be connected directly to the main unit, a useful feature that saves labor during wiring installation.
- Compact construction enables the unit to be easily carried, allowing for changing the work site at any time.



Please inform us of the model No. of the heat nipper when placing an order.

Model No.	Temperature range Thermocouple K (°C)	Power supply (V)	Power consumption (with 100 VAC input)	Operating ambient temperature/humidity (°C) / (%)	Protection fuse	Weight (g)	EDP No.
DTC-001	0~200	AC100~240	Approx. 3W (Approx. 5VA) (With no load)	0~40 RH35~85% (No condensing)	One 15A fuse is incorporated.	900	—

※Please ensure the input voltage in prior to operation as it is directly connected to the heater.
 ※Two types of heaters are available for 100V and 240V.

Option Parts · Power supply cable : Model No. DTC-001-□-□
 □ : Cable for connection to the terminal block is necessary to be included. □ : (N/A) Cable not necessary.
 □ : 2m power cable w/Japanese type plug (A-type) □ : 2m power cable w/European type plug (C-type)
 □ : (N/A) Cable not necessary.