

VACUUM PAD AND HOLDER
PAD Series



2D / 3D
Download

INDEX

■ **VP-CLF** Series

>>> P.4



■ **VP-G** Series

>>> P.6



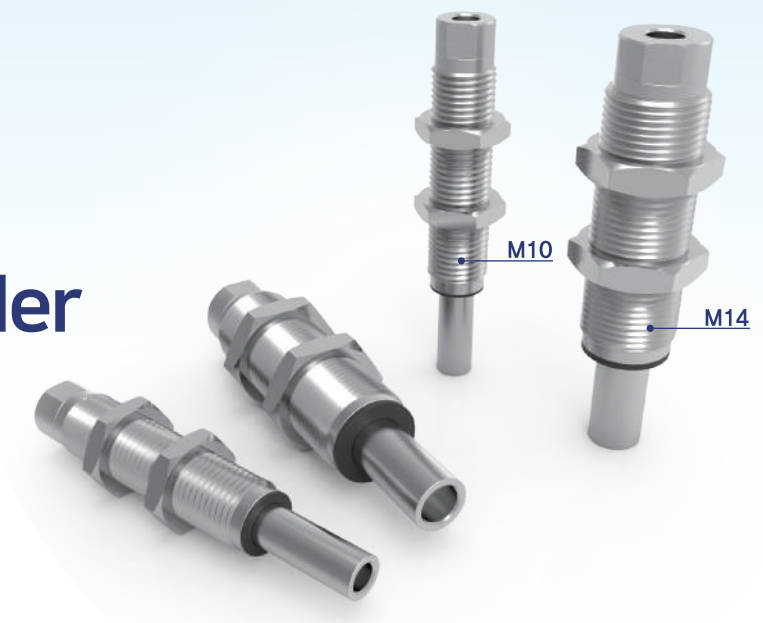
■ **VP-R69** Series

>>> P.8



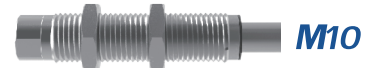
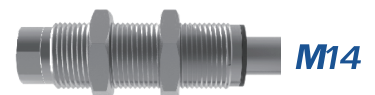


Low Friction Vacuum Pad Holder **CLF** SERIES



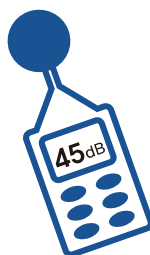
M14 Product launched!!
For $\varnothing 20 \sim \varnothing 50$ Pad available

M10 $\varnothing 0.7 \sim \varnothing 15$ Pad available



Reduced particle below **1/10** (Compared to prior products)

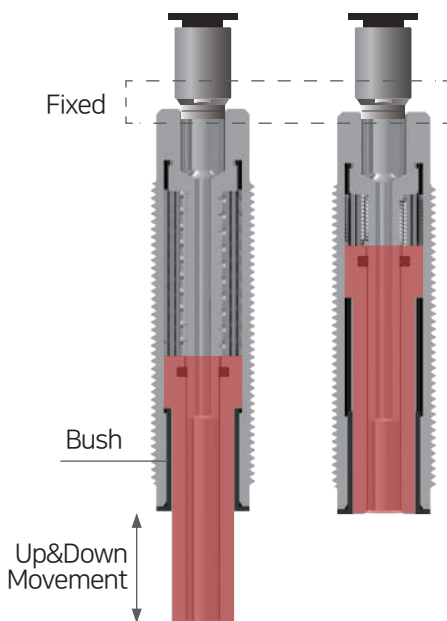
Copper alloy unused



With low friction, low noise!
Noise level **45dB**

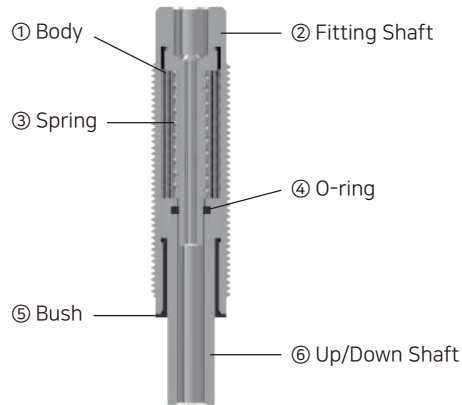
Smooth Up & Down moving
according to anti eccentric structure.

Stuck shaft problem
according to tube tension was solved!



Holder inner structure

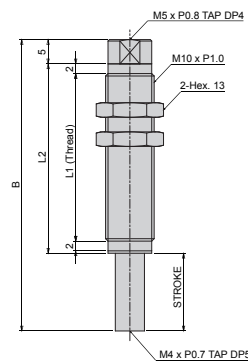
Structure Map



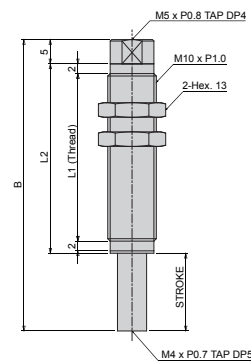
No.	Description	Material
①	Body	STS
②	Fitting Shaft	STS
③	Spring	STS
④	O-ring	NBR
⑤	Bush	Eng' Plastic
⑥	Up/Down Shaft	STS

Dimension(mm)

VP-CLF-M10 series

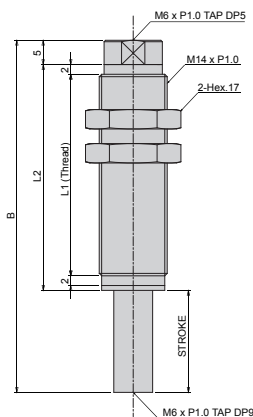


VP-CLF-M10-SF series



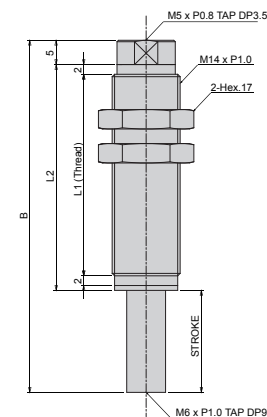
Spec	B	L1	L2	Stroke
VP-CLF-2-M10(SF)	34	21.5	26	2(3)
VP-CLF-5-M10(SF)	40	24.5	29	5(6)
VP-CLF-10-M10(SF)	50	29.5	34	10(11)
VP-CLF-15-M10(SF)	60	34.5	39	15(16)
VP-CLF-20-M10(SF)	70	39.5	44	20(21)

VP-CLF-M14 series



VP-CLF-M14-SF series

* M14 upper fitting TAP M5 changed

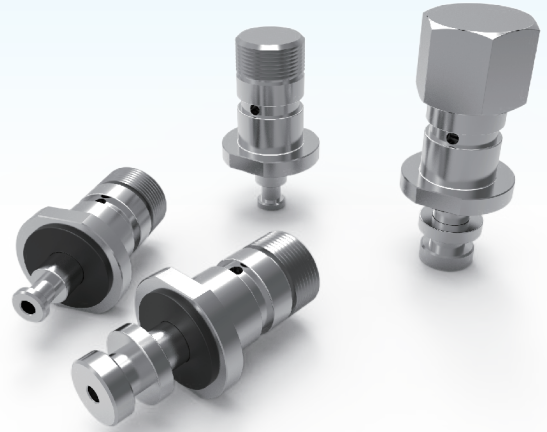


Spec	B	L1	L2	Stroke
VP-CLF-5-M14(SF)	42.5	26.5	31.5	5(6)
VP-CLF-10-M14(SF)	52.5	31.5	36.5	10(11)
VP-CLF-15-M14(SF)	62.5	36.5	41.5	15(16)
VP-CLF-20-M14(SF)	72.5	41.5	46.5	20(21)

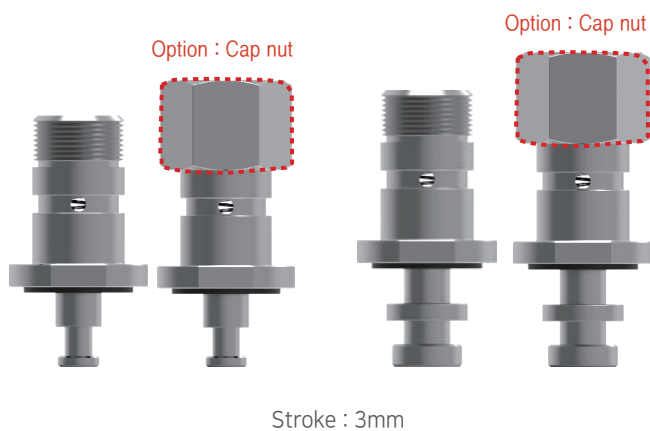
*(SF) is for soft spring type



Low Friction Direct mounting type Vacuum Pad Holder **VPG** *SERIES*



- Minimized current vacuum pad holder
→ Realized small space
- Had various special holder
→ Available special order for customer's needs



- **Non Friction on Body against Non Rotating Part**

According to different structure as current non rotating part, Non friction on body against non rotating part

- **Direct mouning type holder**

- **Rotating/Non Rotating type (Option)**

According to usage, rotating/non rotating option can be selected

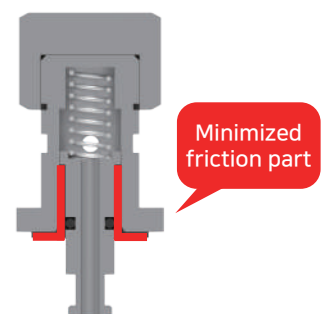
- **Copper Free type**

Using STS material

- **Excellent Durability**

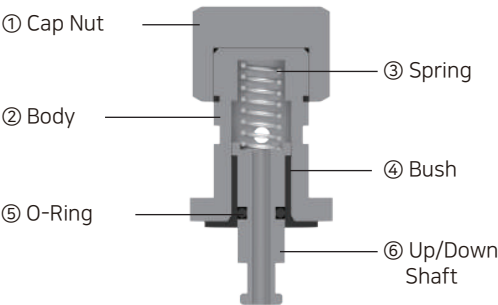
According to use special bush inner holder shaft, smooth and stable Up&Down moving and excellent durability

- **Minimized particle on long time using**



Cross section of holder

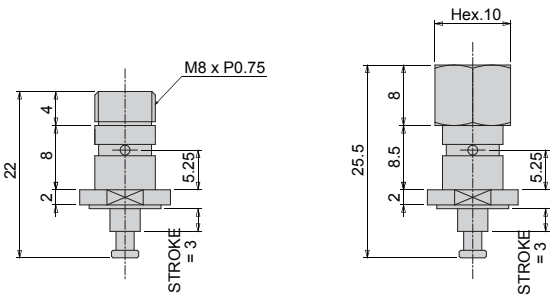
Structure Map



No.	Description	Material
①	Cap Nut	STS
②	Body	STS
③	Spring	STS
④	Bush	Eng' Plastic
⑤	O-ring	NBR
⑥	Up/Down Shaft	STS

Dimension(mm)

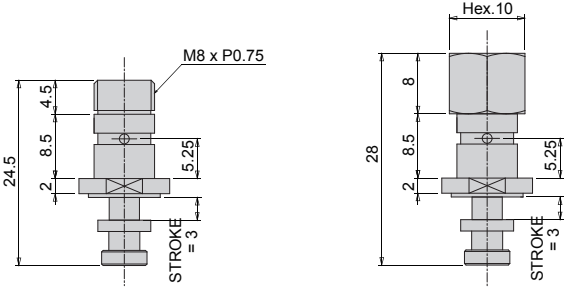
VPG8-3R() series



VPG8-3R()

VPG8-3R()-C

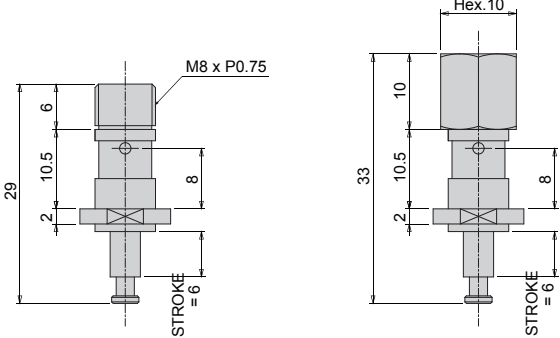
VPG15-3R() series



VPG15-3R()

VPG15-3R()-C

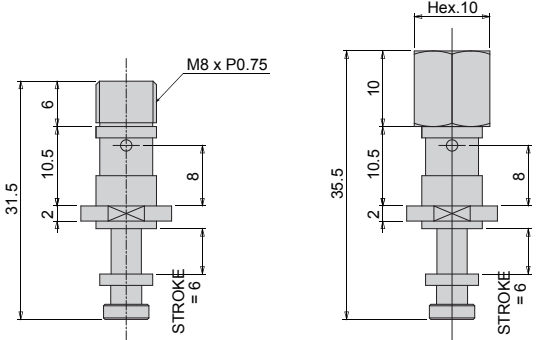
VPG8-6R() series



VPG8-6R()

VPG8-6R()-C

VPG15-6R() series



VPG15-6R()

VPG15-6R()-C

R69 Conductive pad

Surface resistance $10^6 \sim 10^9 \Omega$ is launched

Application and Features by Vacuum Pad

Pad type	Pad size [mm]	Characteristics	Application
Standard type	 Ø1~Ø200		 Flat work (hard and thick work)
Deep type	 Ø15~Ø100		 Spherical fruit (apple, etc.) or round ball
Small type	 Ø0.7~Ø4		 Semiconductor product
Bellows type	 Ø2~Ø100		 Vacuum packed pack and food package
Multi Bellows type	 Ø6~Ø50	 vacuum pad Vinyl, paper, etc.	
Oval type	 2x4~8x30		 Long work such as circuit board or semiconductor product
Sponge type	 Ø10~Ø100		 External wall material of building and work such as small stone and tile

Pad type		Pad size [mm]	Characteristics	Application
Soft type		Ø4~Ø40		 <p>Injection parts or easily scratched parts.</p>
Soft bellows type		Ø6~Ø20	 	
Skid proof type		Ø10~Ø50		 <p>Oily press cut parts.</p>
Ultrathin type		Ø8~Ø20	  <p>Breathable work</p> <p>Plastic bag and paper pack, etc.</p>	 <p>Copy paper, plastic film or thin work.</p>
Flat type		Ø10~Ø30	 	 <p>Return of ultrathin type work, such as sheets, vinyl, etc.</p>
Long stroke type		Stroke available 2~50	  <p>Inner type spring</p> <p>external type spring</p>	 <p>Adsorption is possible even if the height of the work is not specified.</p>
Vacuum cylinder		Ø0.7~Ø50 Stroke 5~20	  	 <p>A vacuum pad with a built-in cylinder and vacuum generator allows compressed air to be vacuumed and the work is adsorbed to raise the cylinder.</p>
Air pincette		Ø1~Ø8	  <p>Hole type</p> <p>Button type</p>	 <p>Ideal for small work adsorption and transfer with tweezers with built-in vacuum pad and vacuum generator in pen-type body</p>
Mark free type		Ø10~Ø30		 <p>Liquid crystal glass, painting process, semiconductor production equipment</p>



Surface resistance
 $10^6 \sim 10^9 \Omega/\text{sq}$

CONDUCTIVE & MARK FREE PAD SERIES



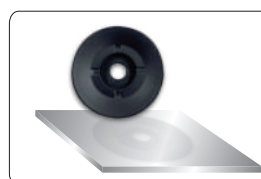
Feature of Conductive Pad



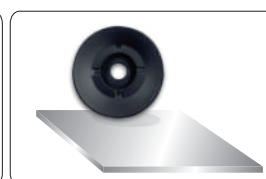
- ※ Surface resistance $10^6 \sim 10^9 \Omega/\text{sq}$
- ※ For surface resistance, the resistance value may vary depending on the room temperature and humidity. We set the measurement point according to the pad size and type, and conduct a total inspection.

Total inspection by TREK surface resistance meter

Feature of Mark Free Pad



Standard Pad

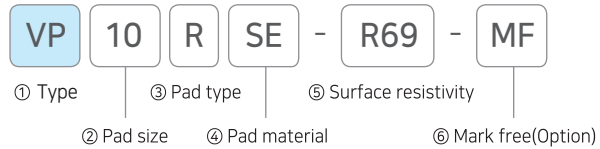


Mark Free Pad

Comparative data of Standard Pad and Mark Free Pad

	Mark Free	Conductive Pad	Silicon	Nitril(NBR)	Fluorine	Urethane
Pad						
Pad floor surface						
Check water vapor mark						

Order Information



① Type

VP	Vacuum pad
----	------------

② Pad size

Code	4	6	8	10	15	20	25	30	40	50
Size(mm)	Ø4	Ø6	Ø8	Ø10	Ø15	Ø20	Ø25	Ø30	Ø40	Ø50
Pad type	Standard	○	○	○	○	○	○	○	○	○
	Bellows		○	○	○	○		○		
	Soft bellows		○	○	○					
	Flat		○	○	○	○	○	○		
	Ultrathin			○	○					
	Skidproof				○	○		○	○	

※ Available size for conductive pad and MF(Mark Free) pad.

③ Pad type

Code	R	B	LB	F	P	K
Type	Standard type 	Bellows type 	Soft bellows type 	Flat type 	Ultrathin type 	Skidproof 

④ Pad material

SE	Conductive silicon
----	--------------------

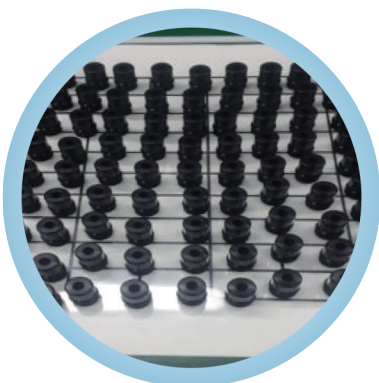
⑤ Surface resistivity

R69	$10^6 \sim 10^9 \Omega/\text{sq}$
-----	-----------------------------------

⑥ Mark free (Option)

Code	None	MF
Mark free	-	Mark free coating

Conductive Vacuum pad inspection method



Put it on the measuring board in 100 units.

※ Actual measurement $10^7 \sim 10^8$: Acceptance
 10^6 early half $\sim 10^9$ latter half : Rejection

※ In case of surface resistance, the resistance value may vary depending on the room temperature and humidity. We set the measurement point according to the pad size and shape, and conduct a total inspection.



Total inspection by TREK surface resistance meter



CONDUCTIVE NBR PAD SERIES

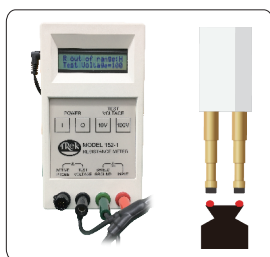
$10^6 \sim 10^9 \Omega/\text{sq}$

Three types of color

Yellow ■, Blue ■, Red ■



Features of Conductive Pad



※ Surface resistivity $10^6 \sim 10^9 \Omega/\text{sq}$

※ In the case of surface resistance, the resistance value may vary depending on the room temperature and humidity. Our company conducts a full inspection by determining the measurement points according to the size and shape of the pad.

※ TREK 社 Full inspection with measuring instrument

Order Information

VP	10	R	NE	-	R69	Y
① Type	② Pad size	③ Pad type	④ Pad material		⑤ Surface resistivity	⑥ Color

① Type

VP	Vacuum pad
----	------------

② Pad outer diameter

Symbol	4	6	8	10	15	20	25	30	40	50
Size(mm)	Ø4	Ø6	Ø8	Ø10	Ø15	Ø20	Ø25	Ø30	Ø40	Ø50
Pad type	Standard	○	○	○	○		○	○	○	○
	Bellows		○	○	○	○		○		
	Soft bellows		○	○	○					
	Flat		○	○	○	○	○	○		
	Ultrathin			○	○	○				
	Skidproof				○	○		○	○	

※ This is the size of the current conductive pad.

③ Pad type

Symbol	R	B	LB	F	P	K
Shape	Standard	Bellows	Soft bellows	Flat	Ultrathin	Skidproof

④ Pad material

NE	Conductivity NBR
----	------------------

⑤ Surface resistivity

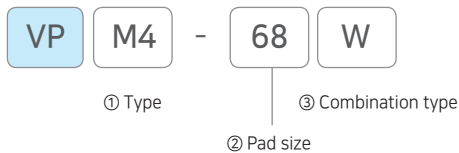
R69	$10^6 \sim 10^9 \Omega/\text{sq}$
-----	-----------------------------------

⑥ Color(Optional)

Symbol	None	Y	BU	R
Color	Black	Yellow	Blue	Red

※ Other colors can be specially prepared.

Order Information (Pad adapter / material : STS303F)



① Type

VP	M4	M6
----	----	----

② Pad size

Code	0.74	68	1015	2025	30	40	50
Size	Ø0.7 ~ Ø4	Ø6 ~ Ø8	Ø10 ~ Ø15	Ø20 ~ Ø25	Ø30	Ø40	Ø50
Type	M4			M6			

③ Combination type

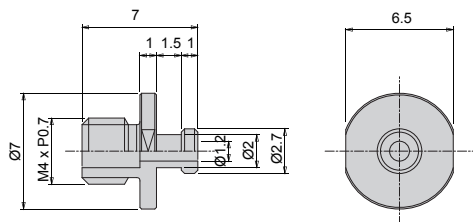
W	Wrench
---	--------

※ For 0.74, it's an external D cut.

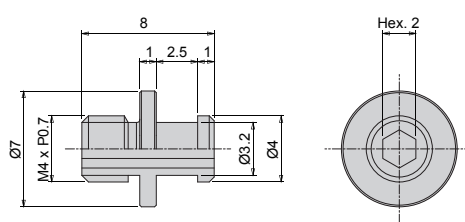
Dimension(mm)

VPM4 series

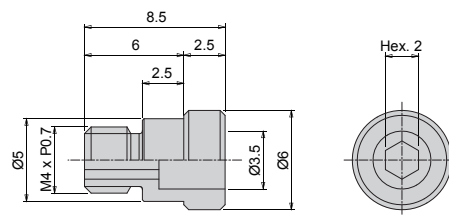
- VPM4-0.74M



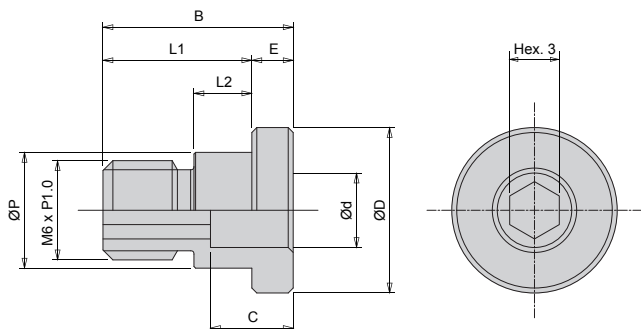
- VPM4-68W



- VPM4-1015W















VPM6 series



Spec	ØD	Ød	ØP	E	C	B	L1	L2
VPM6-2025W	10	4.5	7	2.5	5	11.5	9	3.5
VPM6-30W	12	4.5	7	2.5	5.5	12.5	10	4
VPM6-40W	15	4	6	3	7	15.5	12.5	6
VPM6-50W	20	4	6	3.5	7.5	16	12.5	6

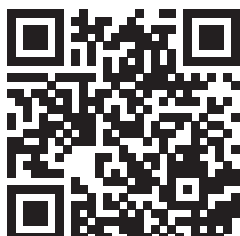
Wide variety of vacuum pad holder

Type		Fixed type			Spring type		
Port direction		Top port	Side port	Direct mount	Top port	Side port	Direct mount
Holder type	Small	VPMA 	VPMB 	—	VPMC 	VPMD 	—
	Standard	VPA 	VPB 	VPE 	VPC 	VPD 	VPF 
	No Cover	—	—	—	VPOC 	VPOD 	—

*3 types of tube connection are available for standard holder : one-touch fitting, barb fitting and female thread

Related Product

VJ Series



VLM Series



PISCO



บริษัท นานตีอินเตอร์เทรด จำกัด
NANDEE INTER-TRADE CO., LTD.

314, 316, 318, 320, 322 ซอยจันทน์ 32 ถนนจันทน์ แขวงทุ่งวัดดอน เขตสาทร กทม. 10120

Tel : 0-2675-8230 (Auto), 0-2675-8240 (Auto) Fax : 0-2212-1448, 0-2213-0360

LINE : @nandeeintertrade

f : nandeeintertrade

globe : www.nandee.co.th

✉ : marketing@nandee.co.th,
sales@nandee.co.th

CATALOG

