

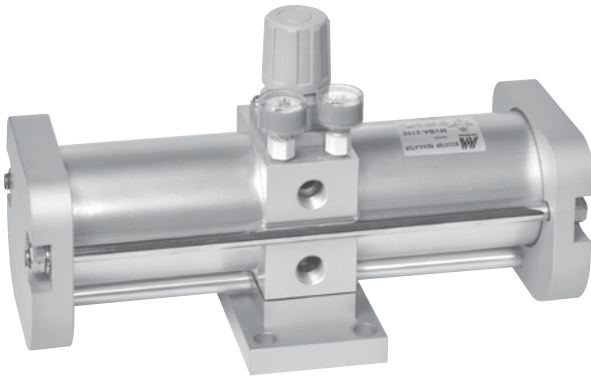
**PISCO** <sup>®</sup> 

## **BOOSTER REGULATOR**

**Up to Twice As Much Factory Air Pressure**

## Features

- Increase factory air pressure by up to twice as much.
- Air-only operation requires no power supply, reduces heat generation, and allows easy installation.



PVBA-2100-S Series



PVBAT30-NDE Series

## Specification

Model	PVBA-2100-S	PVBAT20-NDE	PVBAT30-NDE	PVBAT80-NDE
Port size	Rc3/8			
Medium	Air			
Pressure increase rate	Twice			
Operating pressure range	0.2~1 MPa			
Supply pressure range	0.1~1 MPa			
Proof pressure	1.5 MPa			
Max. flow rate (*)	1000l/min			
Ambient temperature	+2~+50°C			
Installation	Horizontal			
Lubrication	Grease (Non-lube)			
Attachment	Pressure gauge (PG-25)			
Option	Silencer(PSLT-03)	Silencer(PSLT-03), Air tank, Air units (PAFRF401AD-10A)		
Tank (Internal Capacity)	—	20 L	30 L	80 L

\* Max. flow rate at In=Out=0.5 MPa.

## Caution

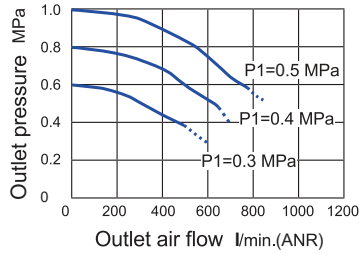
- If the outlet capacity is undersized, pulsation may occur.
- Make sure to install a mist separator (0.3μm) at the inlet side of the booster regulator.
- The booster regulator has a sliding part inside, and it generates dust. Also, install a cleaning device such as an air filter or a mist separator on the outlet side as necessary.
- Provide a dedicated pipe to release the exhaust air from each booster regulator. If exhaust air is converged into a pipe, the back pressure that is created could cause improper operation.
- Depending on the necessity, install a silencer on the exhaust port of the booster regulator to reduce the exhaustion sound.
- Allow the sufficient space for maintenance and inspection.

SCAN



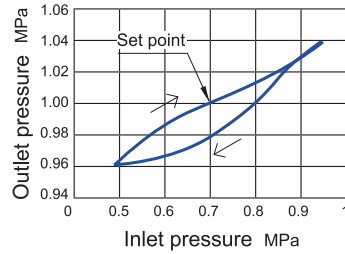
## BOOSTER REGULATOR

### Flow features

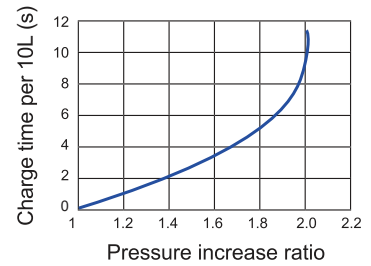


### Pressure characteristics

Supply pressure 0.7 MPa  
Primary pressure 1 MPa  
Flow rate: 20L/min

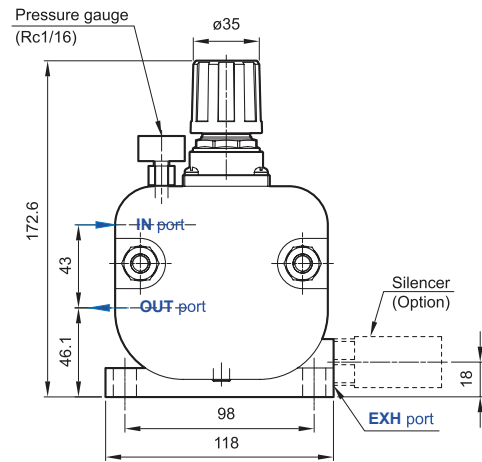
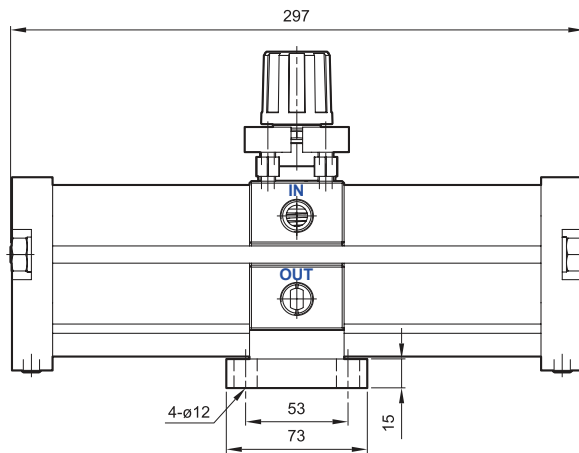


### Charge characteristics

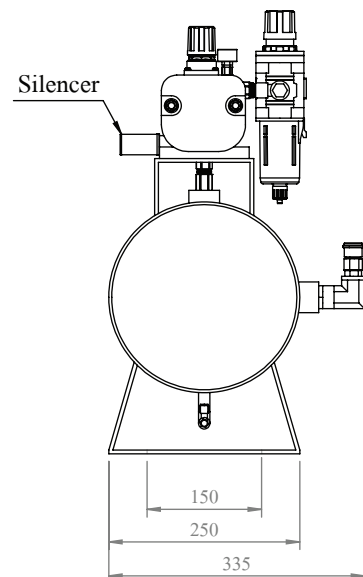
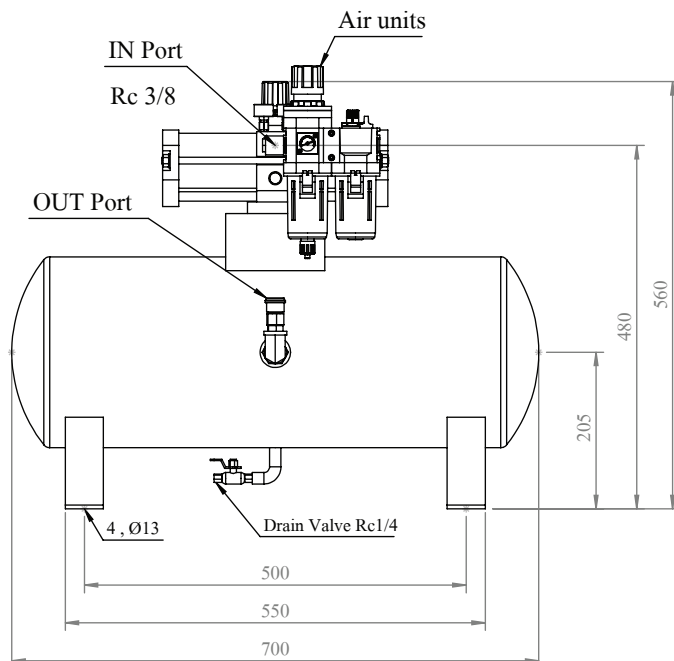


## Dimensions

### PVBA-2100-S series



### PVBAT30-NDE series



\*\*\* ขนาด Tank เปลี่ยนแปลงตามปริมาณความจุของ Tank

# RELATED PRODUCT

## Air Unit

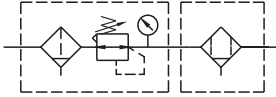
### • Air Inlet



**PISCO®**

PAFRF 401 AD-10A

### Symbol



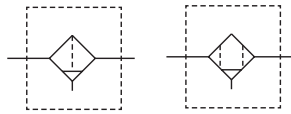
AD : 5µm + 0.3µm

### • Air Outlet



PAF 401 A/D

### Symbol



A: 5µm

D: 0.3µm

## Quick Coupling

### • Air Inlet



OR



**CHIYODA**

**NITTO KOHKI**

Model code

F8-03M	50SN
F10-03M	65SN
F12-03M	80SN

### • Air Outlet



OR



OR



**CHIYODA**

**NITTO KOHKI**

Model code

-	50PN	60PC
F10-04M	65PN	80PC
F12-04M	80PN	100PC

## Multiway Connection

### • Air Outlet

**NITTO KOHKI**

### Rotary Line Cupla



RT Type

RE Type

### Line Cupla



200L Type

+



400 SM



200S Type

+



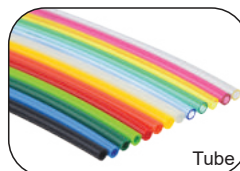
400 SM



200T Type

## Polyurethane

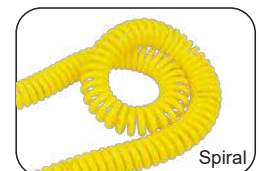
**CHIYODA**



Tube



Hose



Spiral



**บริษัท นานดีอินเตอร์เทรด จำกัด**  
**NANDEE INTER-TRADE CO., LTD.**

314,316,318,320,322 ซอยจันทน์ 32 ถนนจันทน์ แขวงทุ่งวัดดอน เขตสาทร กทม. 10120  
Tel : 0-2675-8230 (Auto), 0-2675-8240 (Auto) Fax : 0-2212-1448, 0-2213-0360

LINE : @nandeeintertrade

f : nandeeintertrade

✉ : marketing@nandee.co.th

🌐 : www.nandee.co.th

SCAN

