



**Water pressure
prouct**

Stainless steel spec

You can also use for oil presse.

Level switch



LSN

This level switch has been developed to detect liquid level in a water tank!

SUS spec

RoHS



- This is a small and low price level switch consisting of a high accuracy reed switch and a float with a built-in magnet.
- It ensures stable operation without being affected by fluid temperature.
- It is installed from the top surface of a tank, using a flange with a connector.
- Depth of liquid detection (L): 80~500mm (By the 1mm)

※ Regarding M12×1-4 pin connector type, contact us.

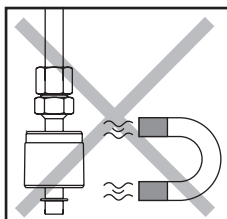
Specification

	Standard spec (For water)
Contact capacity	1.2VA DC
Contact resistance	1 Ω or less
Max. voltage	24V DC
Max. current	0.05A DC
Min. current load	5mA
Insulation resistance	50M.Ω or more by DC500V
Proof voltage	AC1000V /1 min
Ambient temp.	- 10°C ~ 80°C
Specific gravity	0.7 ± 0.05 (float)
Standard accessories	① Packing (Material : NBR, Size : P38) : 1pc ② Hexagon socket head bolt (M4×16) : 2 pcs
Fluid	Pure water, Petroleum oil, Water-glycol based oil
Weight	280g (Without a pipe)

※ If you need 100V spec, contact us.

Note

Use in a magnetic field would cause malfunction.



Description

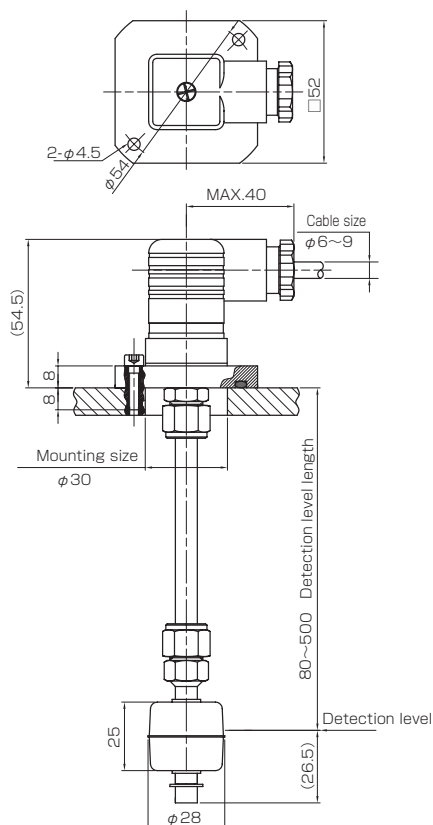
LSN - 200 L - A - 31

① ② ③ ④

①	N a m e	Level switch
②	Level length ※1	Min. 80mm ~ Max. 500mm (By the 1mm) Setting accuracy: ± 3mm
③	Contact type	H-A : ON above level (OFF below level) H-B : OFF above level (ON below level) L-A : ON below level (OFF above level) L-B : OFF below level (ON above level)
④	Model no.	31 : SUS spec (SUS304)

※ 1 : Specific gravity of fluid = 1.0

Dimension



Temperature switch

This is a bimetal temperature switch developed to detect oil temperature in a water tank!

TSD/TSF

SUS spec

RoHS



TSD



TSF

TSD: Temperature switch (From tank side)

- A switch is directly installed on the side of a tank, using R1/2 screw.
- Low cost compared to "TSF" type.
- Connector type.

TSF: Temperature switch (From tank top)

- It is installed from the top surface of a tank, using a flange with a connector.
- Install from the top of a tank so that a switch main unit is entirely immersed in water.
- Detection length (L): 130~500mm (By the 1mm)

※ Regarding M12×1-4 pin connector type, contact us.

Setting temp. (Fixed at our factory)

Setting temp. range	45°C ~ 75°C (By the 5°C)	
Setting temp. rank	45°C ~ 50°C	55°C ~ 75°C
Temp. differential	± 3°C	± 4°C

Standard accessories (TSF)

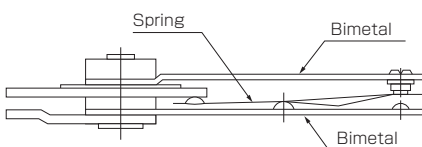
Standard accessories	① Packing (Material: NBR, Size: P38) : 1pc ② Hexagon socket head bolt (M4 × 16) : 2pcs
----------------------	---

Contact spec

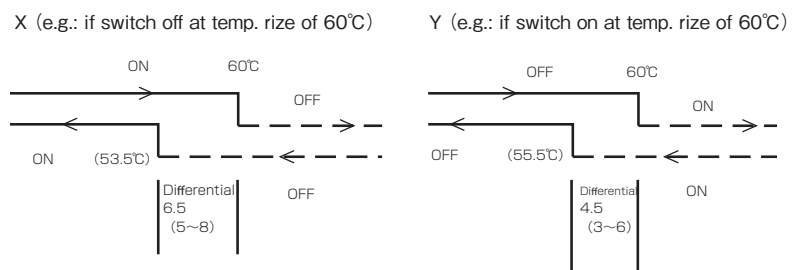
Model	Contact type	Differential	Contact capacity	Min. current	Contact life	Temp. range	Fluid	Weight
TSD-※X-31	Temp. rise/OFF	45X~75X: 6.5(5~8)°C	AC125V 1.5A	50mA	Mechanical life: 2 million times Contact life: 100 thousand under max. load	-20~105°C	Pure water, Petroleum oil, Water-glycol based oil	200g
TSD-※Y-31	Temp. rise/ON		DC 12V 1.5A					
TSF-※X-31	Temp. rise/OFF	45Y~65Y: 4.5(3~6)°C	AC250V 0.9A					
TSF-※Y-31	Temp. rise/ON	70Y~75Y: 6.5(5~8)°C	DC 24V 0.9A (Life: 100 thousand)					Without a pipe 320g

31 : SUS spec (SUS304)

Principle



Contact configuration



Description

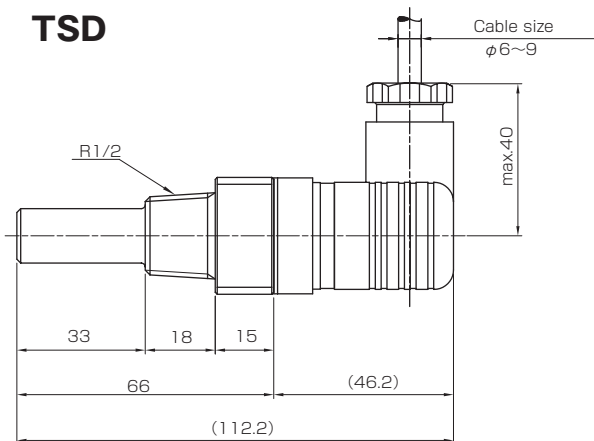
TSF - **※** **X** - **250** - **31**

① ② ③ ④ ⑤

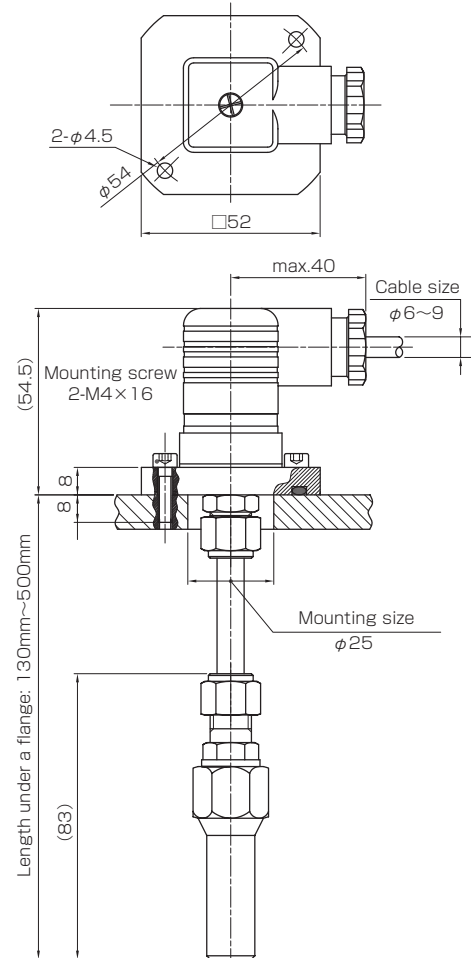
①	Name	TSD : Temperature switch (From tank side) TSF : Temperature switch (From tank top)
②	Setting temp.	45 ~ 75°C (By the 5°C)
③	Contact type	X : Temp. rise/OFF Y : Temp. rise/ON
④	TSF length under flange (Except TSD)	Min. 130mm ~ Max. 500mm (By the 1mm)
⑤	Model no.	31 : SUS spec

Dimension

TSD



TSF



Glycerin pressure gauge (φ60)

Standard accessories: Safety marks!

OSG

SUS spec

RoHS



JIS symbol



- Shaking of a pointer due to mechanical vibration is absorbed by viscous drag of glycerin into a gauge.
- Movement of a bourdon tube is also absorbed, improving absorption effect of pulsating pressure of fluid.
- Glycerin serves as lubricating oil for a friction part of a bearing and gear in a gauge, thereby improving the durability of the internal mechanism.
- Even if a bourdon tube is broken, a front plate isn't shattered, because water is purged from a safety cap.
- You can easily set pressure range and setting value by green marks on a front plate.
- Select a pressure gauge which has max pressure scale of 2 times more than your pressure range.



Specification

Fluid	Pure water (Petroleum oil Phosphate ester oil)
Accuracy	± 1.6%/F.S.
Temp. range	- 5 ~ 40°C
Indication error	± 0.3% / 10°C
Liquid	Glycerin
Vibration range	0 ~ 7 G
Optional spec	<ul style="list-style-type: none"> ● Color scale (Contact us) ● Cold climates spec (Temp. range: - 15 ~ 60°C, Silicon oil spec)

Description

OSG - A T - G1/4 - 60 × 10MPa

① ② ③ ④ ⑤ ⑥

①	Name	Glycerin pressure gauge SUS spec
②	Profile	A : Frameless
③	Socket type	T : Square
④	Screw type	G1/4 R1/4
⑤	Size	60 : φ 60mm
⑥	Pressure range (Max. scale)	See model tables

How to use safety marks (φ60)

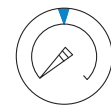
- For setting pressure range

Set 2 safety marks on upper limit (Right) and lower limit (Left) of your pressure range.



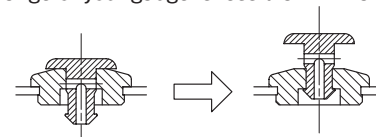
- For setting pressure value

Set 2 safety marks on right and left together like an arrow form.



Note

- Some combinations of shape, size, and pressure range are not available. Please refer to model tables to select your gauge.
- A glycerin pressure gauge should be mounted vertically. Otherwise, indication error and glycerin leakage may occur.
- We do not offer a glycerin pressure gauge with a special hand-written scale.
- Pull a green plug before using, if pressure range of your gauge is less than 1MPa.



- As a pressure gauge of less than 1MPa has little torque of a bourdon tube, temperature change (internal pressure change) into the gauge will affect indication accuracy. By pulling a green plug of a safety cap, a balance between internal pressure and atmospheric pressure can be maintained, thereby preserving accuracy.

Water pressure product (SUS)

- Conversion table : [P26](#)
- Scale plate : [P27](#)

Model tables/Dimension

※ It takes 20 ~ 40 days to produce make-to-order models.

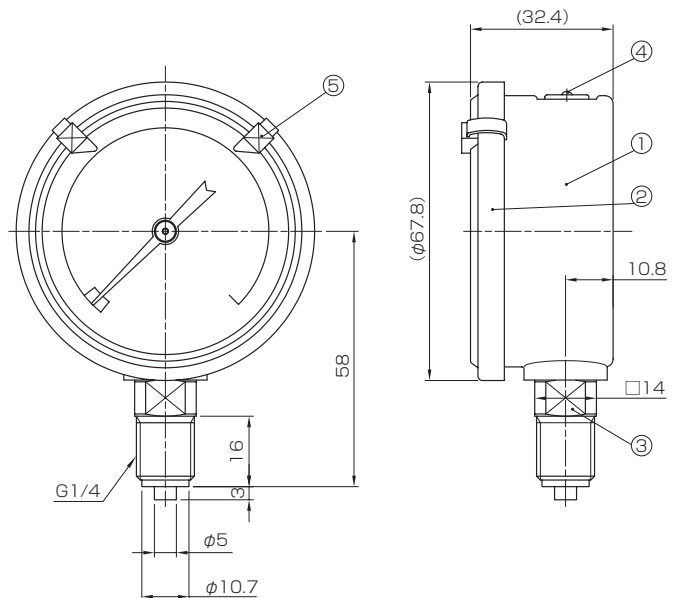
φ 60 parts table

No.	Parts	Material	Q'ty
1	Case	SUS304	1
2	Lid	SUS304	1
3	Socket	SUS316	1
4	Safety cap	Silicon rubber	1
5	Safety mark	PP/SUS304	2

φ60 A type G1/4

Profile	Frameless	Screw type	G1/4
Socket type	Square	Weight	230g

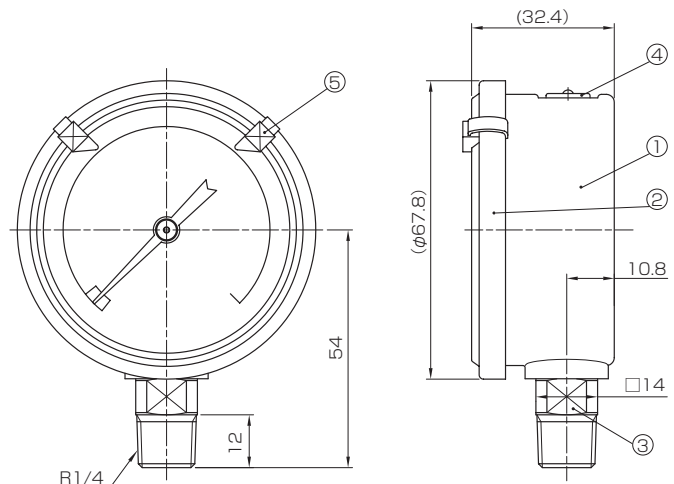
Oeder no.	Model
R402-507	OSG-AT-G1/4-60 × 1 MPa
R402-508	OSG-AT-G1/4-60 × 1.6MPa
R402-509	OSG-AT-G1/4-60 × 2.5MPa
R402-510	OSG-AT-G1/4-60 × 4 MPa
R402-511	OSG-AT-G1/4-60 × 6 MPa
R402-512	OSG-AT-G1/4-60 × 10 MPa
R402-513	OSG-AT-G1/4-60 × 16 MPa
R402-514	OSG-AT-G1/4-60 × 25 MPa
R402-515	OSG-AT-G1/4-60 × 40 MPa



φ60 A type R1/4

Profile	Frameless	Screw type	R1/4
Socket type	Square	Weight	230g

Order no.	Model
R402-607	OSG-AT-R1/4-60 × 1 MPa
R402-608	OSG-AT-R1/4-60 × 1.6MPa
R402-609	OSG-AT-R1/4-60 × 2.5MPa
R402-610	OSG-AT-R1/4-60 × 4 MPa
R402-611	OSG-AT-R1/4-60 × 6 MPa
R402-612	OSG-AT-R1/4-60 × 10 MPa
R402-613	OSG-AT-R1/4-60 × 16 MPa
R402-614	OSG-AT-R1/4-60 × 25 MPa



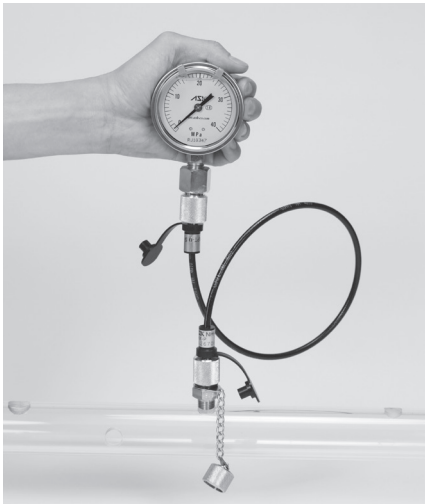
Pressure tester

Suitable for occasional pressure detection if you don't always measure pressure!

APT

SUS spec

RoHS



- You can measure circuit pressure up to 35MPa even during pressurization.
- If you install a special nipple to a circuit where you need to measure, you can check pressure whenever required.
- Cost reduction, by replacing a pressure gauge in use with a pressure tester.
- You can read pressure at all positions with a pressure hose.
- Suitable for venting air from a circuit and sampling oil.
- Easy diagnosis and maintenance of a hydraulic circuit.

! Safety precaution

- Use a pressure tester when you check temporary pressure. If your circuit is always pressurized, use our "NH hose" with hose fittings.
- A pressure tester hose is mainly made of nylon resin. Do not fold or twist it.

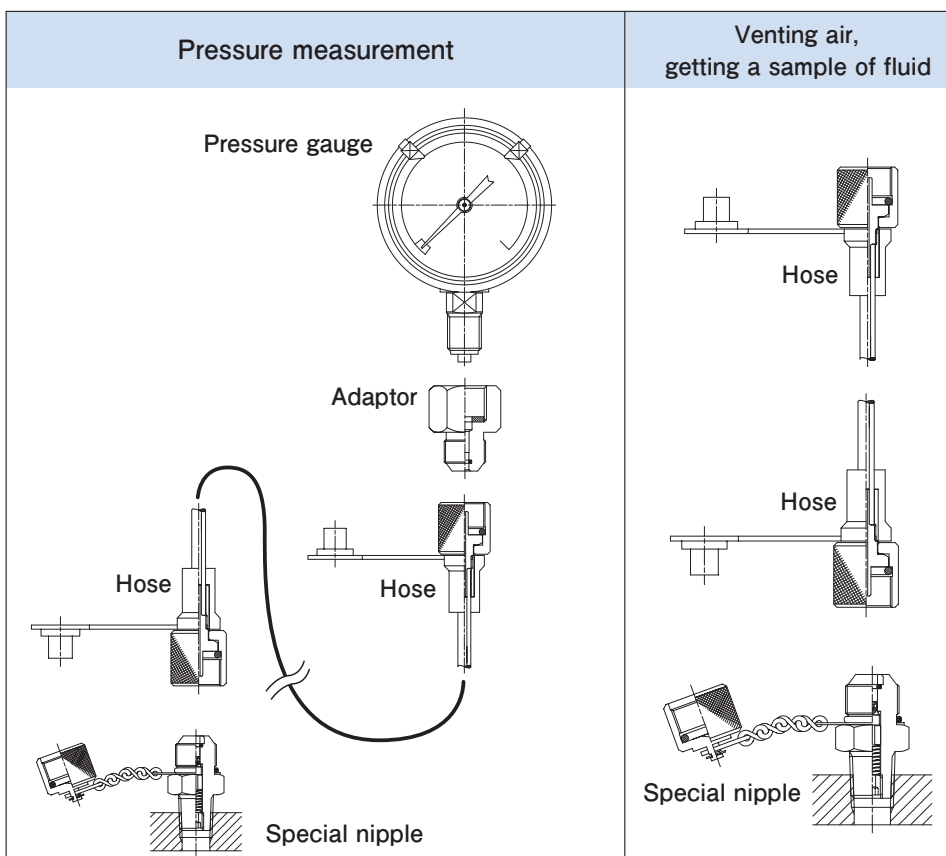
Specification

Max. pressure	35MPa
Proof pressure	50MPa
Fluid	Pure water, Petroleum oil, Water-glycol based oil
Material	SUS

Example of use

Construction	Concrete pumping car, shovel car, bulldozer
Machine	Large machine, special-purpose machine, hydraulic press
Iron and steel	Iron and steel making plants
Injection	Accumulator injection circuits, clamping circuits
Vehicle	Large special vehicles

Example of combination



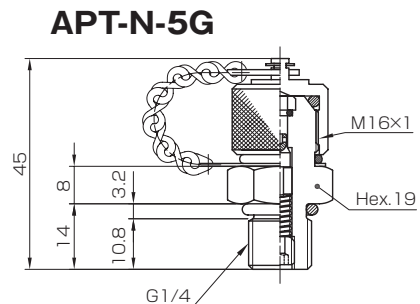
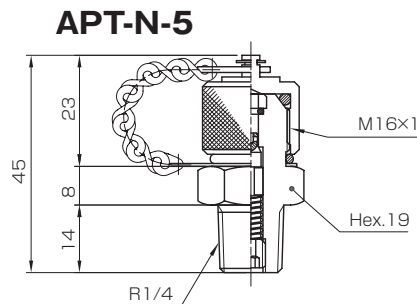
Pressure tester

Special nipple

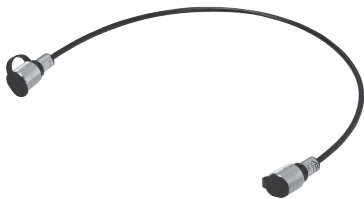


This is a check valve type special nipple. If you tighten a metal fitting on a high pressure hose side, a check valve will open.

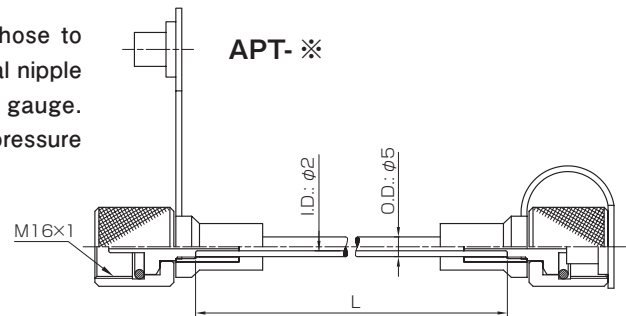
Order no.	Model	Screw type	Packing Material/Size	Weight
A040-N05	APT-N-5	R1/4	—	80g
A040-N5G	APT-N-5G	G1/4	NBR/P11	



High pressure hose

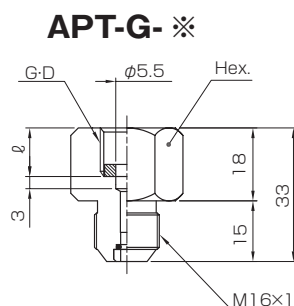


This is a high pressure hose to connect between a special nipple and a glycerin pressure gauge. You can use it when a pressure detecting position is far.



Order no.	Model	Length L	Max. pressure	Proof pressure	Temp. range	Ambient temp.	Min. bending radius	Weight
A040-105	APT-05-NS	0.5m	35MPa	50MPa	-20~60°C	Max. 60°C or less	40mm	90g
A040-110	APT-10-NS	1.0m						100g
A040-120	APT-20-NS	2.0m						120g
A040-130	APT-30-NS	3.0m						140g

Pressure gauge adaptor



Order no.	Model	Screw type	ℓ	Hex	Weight	Packing material	Packing dimension
A040-G05	APT-G-5	G1/4	12	21	70g	PTFE	11 × 5.5 × 3
A040-G06	APT-G-6	G3/8	14	24	80g		14.5 × 5.5 × 3

- This is an adaptor to connect a high pressure hose to a glycerin pressure gauge. Select the best adaptor in conformance to the screw diameter of your gauge.
- If you use this pressure gauge adaptor, you can easily connect or disconnect a glycerin pressure gauge and a high pressure hose by hand without using a wrench. Be sure to use an adaptor for each pressure gauge.

Storage kit (Plastic Case)

- Suitable for accommodating pressure tester pieces in a compact space, to be used as a portable tool.
- This case can accommodate up to 3 glycerin pressure gauges, 6 special nipples, 3 pressure gauge adaptors, and 3 high pressure hoses.

Order no.	Model	Dimension	Weight
A040-BOX	APT-BOX	410×300×70	1300g



For pressure tester

- Sturdy stainless steel case!
- Select a pressure gauge whose full scale pressure is more than double your pressure range.

Order no.	Model
R402-510	OSG-AT-G1/4-60 × 4MPa
R402-511	OSG-AT-G1/4-60 × 6MPa
R402-512	OSG-AT-G1/4-60 × 10MPa
R402-513	OSG-AT-G1/4-60 × 16MPa
R402-514	OSG-AT-G1/4-60 × 25MPa
R402-515	OSG-AT-G1/4-60 × 40MPa

※ Regarding spec of this gauge, see [P61](#).



High pressure nylon hose (For small diameter piping)

Characterized flexibility and high pressure use!

SUS spec

RoHS



Note

Refer to "Hose length" below, when ordering.

- This is a small diameter nylon hose for high pressure.
- This hose eliminates the need of bending work by a bendor, and reduces your time for complicated or long piping.

! Safety precaution

- NH hose is made of nylon resin. It must be connected without "fold" or "twist".
- Expansion and contraction of hose outer diameter and length is generated, due to changes of inner pressure. If you use a hose clamp to fix a hose, do not fix the hose tightly because of it. Select hose length added 20mm to your length, just in case.
- Bending radius of hose must be more than the minimum value in "spec".
- Keep NH hose away from fire.
- Do not use beyond temperature range.

Specification

O.D. × I.D.	φ6 × φ3
Min. bending radius	50mm
Max. pressure	35MPa
Proof pressure	70MPa
Temp. range	-20~60°C
Ambient temp.	Max. 60°C
Fluid	Pure water, Petroleum oil, Water-glycol based oil
Weight	30g/m

Example of use

- Piping for a pressure gauge
 - Piping for a small flow rate pilot line
 - Hydraulic clamp for work
 - Piping for a miniature cylinder
 - Hydraulic circuit for an injection molding machine
 - Piping for a clamp cylinder and a pressure gauge of hydraulic press
 - Piping pressure gauge of hydraulic unit
- ※ Suitable for hydraulic circuits of low flow rate

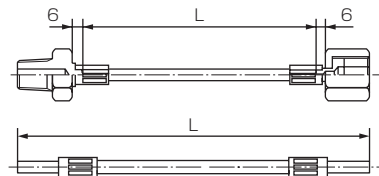
Description

NH3 - R5 - 1.0 - G5 -

① ② ③ ④ ⑤

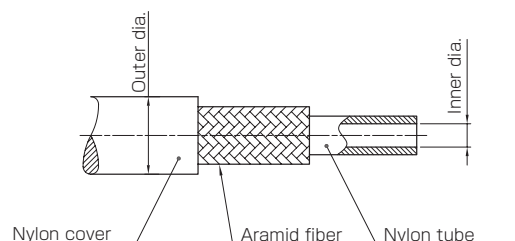
①	Model	NH3 : O.D. φ6 × I.D. φ3
②	Fitting model	Select from hose fitting table. P67
③	Hose length L	1.0m or more: Order by the 0.1m Form 0.2m till 1.0m: Order by the 0.05m Less than 0.2m: Not available
④	Fitting mode	Select from hose fitting table. P67
⑤	Wire blade	Unmarked: Without wire blade W : With wire blade (SUS)

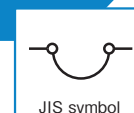
Note of hose length



L means hose total length, if K6 type for both sides.

Structure





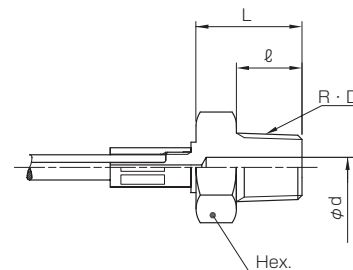
Hose fitting

NH3-R5

Male fitting

Material : SUS

Model	Screw type R · D	L	ℓ	φd	Hex.	Weight
NH3-R5	R1/4	21	13	4	19	32g

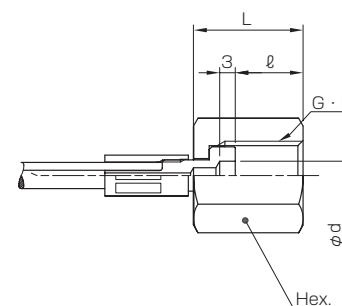


NH3-G ※

For gauge

Material : SUS

Model	Screw type G · D	L	ℓ	φd	Hex.	Packing	Packing dimension	Weight
NH3-G5	G1/4	21	13	5.5	19	PTFE (Material)	11 × 5.5 × 3	42g
NH3-G6	G3/8				21		14.5 × 5.5 × 3	52g

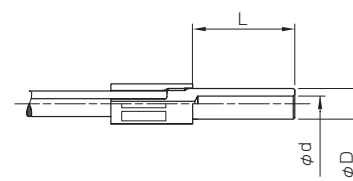


NH3-K6S

For flareless joint

Material : SUS

Model	φD	L	ℓ	φd	Hex.	Weight
NH3-K6S	6	20	—	3	—	17g

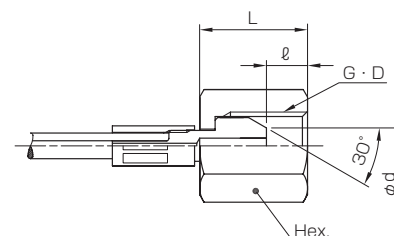


NH3-UM5

Union female fitting

Material : SUS

Model	Screw type G · D	L	ℓ	φd	Hex.	Weight
NH3-UM5	G1/4	21	8	7	19	42g



Gauge valve

Can be used as a small-flow-rate throttle valve!

SAN-100

SUS spec

RoHS



JIS Symbol

■ A needle valve for a pressure gauge.



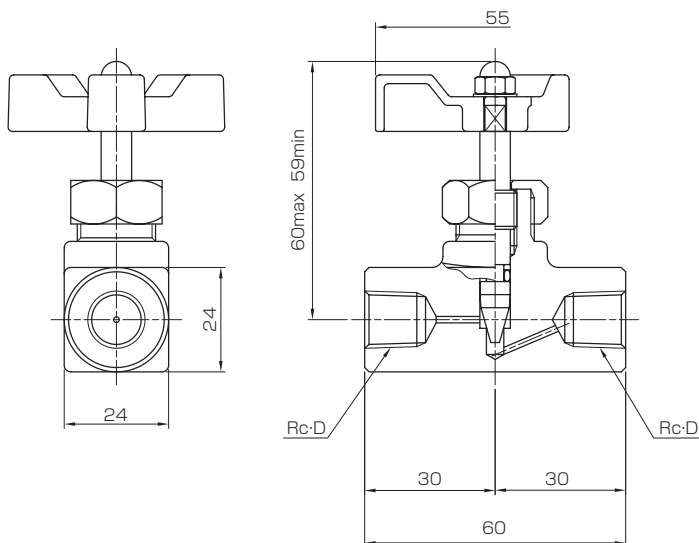
Specification

Max. Pressure	35MPa
Proof pressure	63MPa
Body material	SUS
O-ring material	NBR

Model

Order no.	Model	Screw type Rc · D	Fluid	Weight
A010-105	SAN-100-5	Rc1/4	Pure water (Petroleum oil, Water-glycol based oil)	320g
A010-106	SAN-100-6	Rc3/8		

Dimension



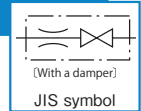
Gauge valve with damper

Needle valve for pressure gauge with damper function!

SAN-200N/SAN-300N

SUS spec

RoHS



SAN-200N



SAN-300N

- As surge pressure and pulsating pressure are absorbed by a damper, accuracy and durability of a pressure gauge are greatly improved.
- Than a damper and a gauge valve are installed separately, this installation method saves space and reduces your costs.
- You can easily set the direction of a pressure gauge by a gauge socket.

Specification

Max. pressure	35MPa		
Proof pressure	63MPa		
Body material	SUS		
O-ring material	NBR		
Torque ※	G·D	G1/4	40N·m
		G3/8	50N·m

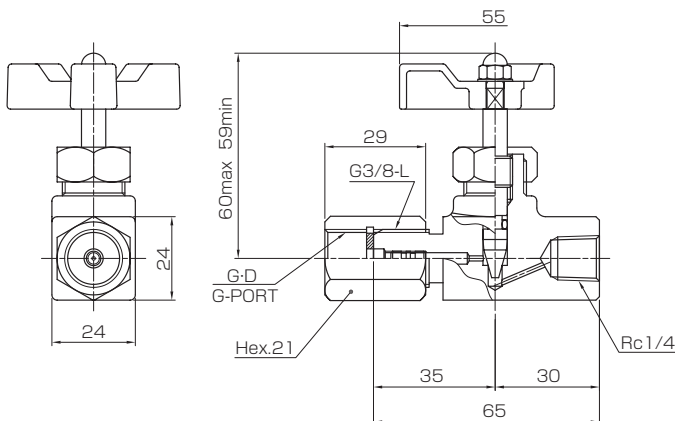
※ As to be safely sealed the space between a pressure gauge and a gauge valve socket by using the attached a teflon packing, please refer to the torque which we recommend on this table before installing.

Model

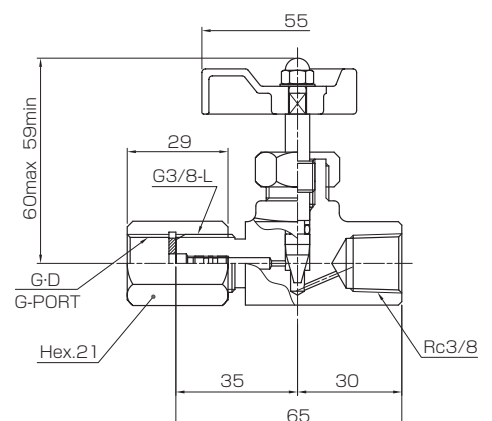
Order no.	Model	Gauge screw type G·D	Pipe screw type	Packing	Packing diameter	Fluid	Weight
A012-205	SAN-200N-5	G1/4	Rc1/4	PTFE (Material)	14.5 × 5.5 × 3	Pure water (Petroleum oil (Water-glycol based oil))	360g
A012-206	SAN-200N-6	G3/8					
A013-306	SAN-300N-6	G3/8	Rc3/8				

Dimension

SAN-200N



SAN-300N



Water pressure product (SUS)

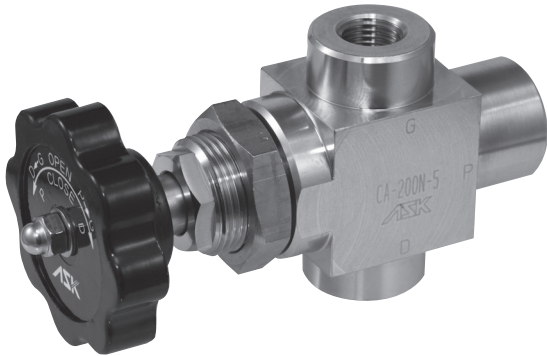
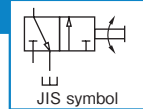
Needle gauge valve with drain

One valve performs the functions of two valves!

CA

SUS spec

RoHS



- Set a knob in "Close" position after measuring, and a gauge pointer goes to "0."
- If you always set "Close", normally, a gauge pointer remains "0". This keeps a pressure gauge accurate long, and ensures improved durability.
- A shaft is a needle valve structure to prevent fluid leakage when fully closed.

Structure

- Two needle valves symmetrically facing each other.

Knob **Open** : for measuring
 Knob **Middle** : for circuit air purge
 Knob **Close** : for circuit port shut-off

- Both ordinary gauge valve function and circuit air purge valve function can be provided by a single valve.

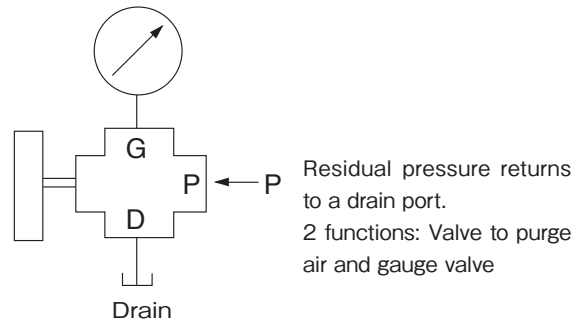
Model

Order no.	Model	Screw type	Weight
A021-205	CA-200N-5	Rc1/4	460g

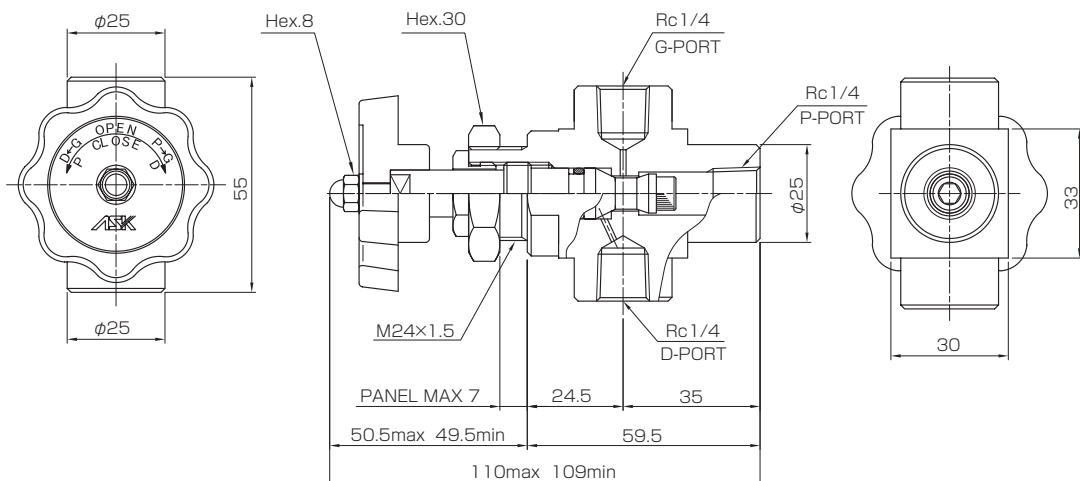
Specification

Max. pressure	35MPa
Proof pressure	63MPa
Body material	SUS
Fluid	Pure water (Petroleum oil Water-glycol based oil)
Torque	25N·m
O-ring material	NBR

Connection



Dimension



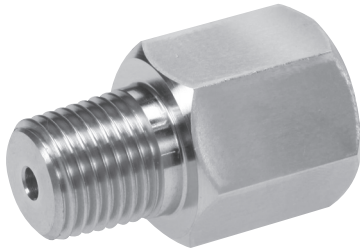
Joint for pressure gauge

For connection between a valve and a pressure gauge!

AJ

SUS spec

RoHS



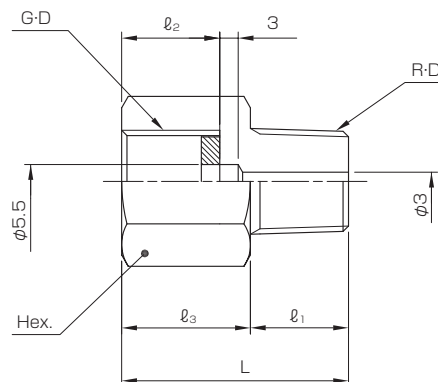
Specification

Max. pressure	35MPa
Proof pressure	63MPa
Material	SUS
Fluid	Pure water (Petroleum oil, Water-glycol based oil)

Specification

Order no.	Model	G · D	R · D	l_1	l_2	l_3	L	Hex	Torque	Packing material	Packing diameter	Weight
A005-105	AJ-105	G1/4	R1/4	14	14	19	33	19	40N · m	PTFE	11 × 5.5 × 3	40g
A005-106	AJ-106	G3/8	R1/4	14	16	21	35	24	50N · m		14.5 × 5.5 × 3	60g
A005-305	AJ-305	G1/4	R3/8	16	14	19	35	24	40N · m		11 × 5.5 × 3	40g
A005-306	AJ-306	G3/8	R3/8	16	16	21	37	24	50N · m		14.5 × 5.5 × 3	60g

Dimension



Water pressure product (SUS)

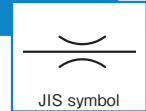
Low pressure damper

Prevent pulsating pressure of a pressure gauge!

SA

SUS spec

RoHS

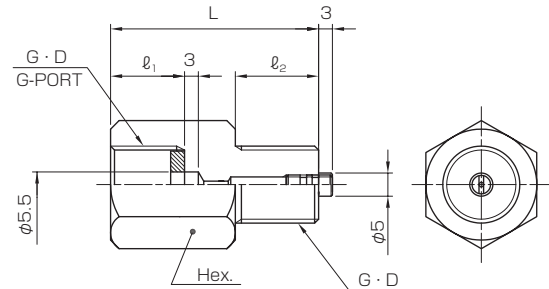


- Use this fixed throttle valve at a position where you measure pressure.
- You can also use it for synthetic oil, water based oil and brake oil.

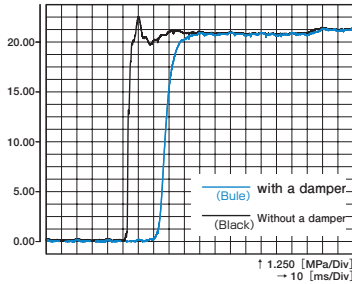
Specification

Max. pressure	10MPa
Proof pressure	18MPa
Material	SUS
Fluid	Pure water (Petroleum oil, Water-glycol based oil)

Dimension



Damper effect test



Model

Order no.	Model	G · D	l ₁	l ₂	L	Hex	Torque	Packing	Packing dimension	Weight
A001-105	SA-100-5	G1/4	14	16	42	19	40N · m	PTFE	11 × 5.5 × 3	60g
A001-106	SA-100-6	G3/8	16	18	45	24	50N · m	(Material)	14.5 × 5.5 × 3	100g

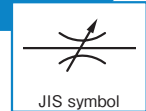
High pressure damper

Prevent pulsating pressure of a pressure gauge!

SAH

SUS spec

RoHS

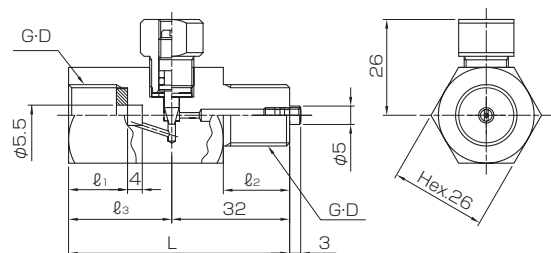


- As abrupt surge pressure is absorbed, a damper is prevented from breakdown of a gauge.
- Pulsation is also removed; therefore, durability of gauge is improved.
- You can adjust pulsation by needle valve, and also use as a stop valve.

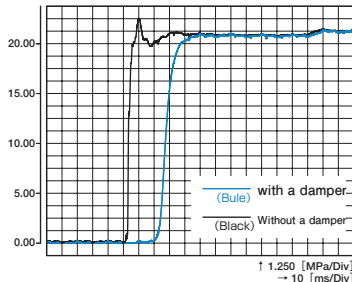
Specification

Max. pressure	35MPa
Proof pressure	63MPa
Body material	SUS
O-ring material	NBR

Dimension



Damper effect test



Model

Order no.	Model	G · D	l ₁	l ₂	l ₃	L	Torque	Packing material	Packing dimension	Fluid	Weight
A002-105	SAH-100-5	G1/4	14	16	26	58	40N · m	PTFE	11 × 5.5 × 3	Pure water (Petroleum oil, Water-glycol based oil)	220g
A002-106	SAH-100-6	G3/8	16	18	28	60	50N · m		14.5 × 5.5 × 3		230g

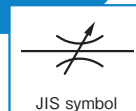
Glycerin pressure gauge damper

Prevent pulsating pressure of a pressure gauge!

SAD

SUS spec

RoHS

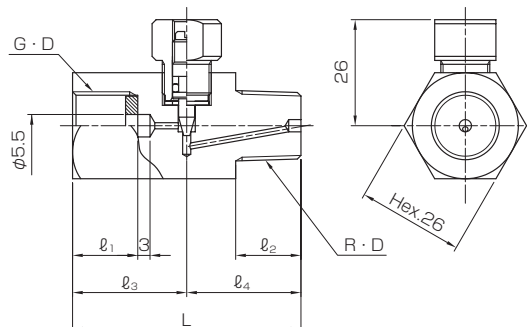


- This damper is developed to prevent pulsating pressure of a gauge. It is designed to have a needle control valve structure.
- You can also use as a stop valve.

Specification

Max. pressure	35MPa
Proof pressure	63MPa
Material	SUS
Fluid	Pure water (Petroleum oil, Water-glycol based oil)
O-ring material	NBR

Dimension



Model

Order no.	Model	G · D	R · D	l ₁	l ₂	l ₃	l ₄	L	Torque	Packing	Packing dimension	Weight
A003-05T	SAD-5T	G1/4	R1/4	14	14	26	26	52	40N · m	PTFE	11 × 5.5 × 3	210g
A003-06T	SAD-6T	G3/8	R3/8	16	16	28	28	56	50N · m	(Material)	14.5 × 5.5 × 3	220g

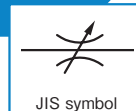
Pressure switch damper

Pressure switch damper absorbs water pressure pulsation!

PSD

SUS spec

RoHS

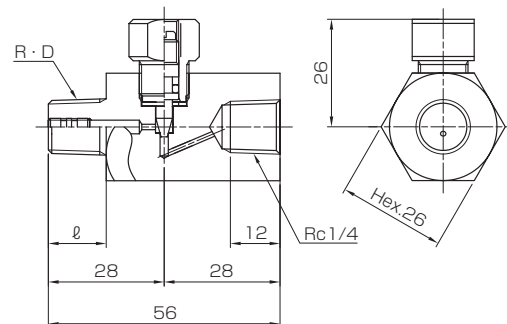


- A damper mounted on a screw of a pressure switch absorbs water pressure pulsation and prevents chattering of a contact.
- Durability of pressure switch is improved.
- You can also use this as a stop valve.

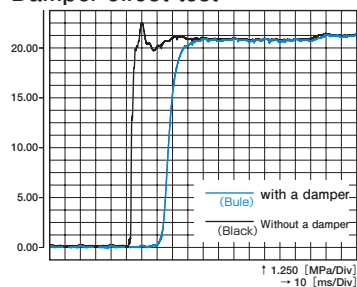
Specification

Max. pressure	35MPa
Proof pressure	63MPa
Material	SUS
Fluid	Pure water (Petroleum oil, Water-glycol based oil)
O-ring material	NBR

Dimension



Damper effect test



Model

Order no.	Model	R · D	Torque	l	Weight
A004-005	PSD-5	R1/4	25N · m	14	230g
A004-006	PSD-6	R3/8	45N · m	16	

Water pressure product (SUS)

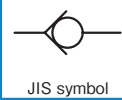
In-line check valve

In-line type for easy pipe connection!

AIC

SUS spec

RoHS



- This is an in-line check valve of stainless steel developed for the machine tool coolant system and for water.
- A valve can also be used in fresh water and industrial water but coolant.
- It is possible to prevent a valve from being locked by rust during transportation of a coolant system or long suspension of a operation.
- To avoid failure of dew condensation in a factory under poor conditions.

Description

AIC - 02 - 04 - 31

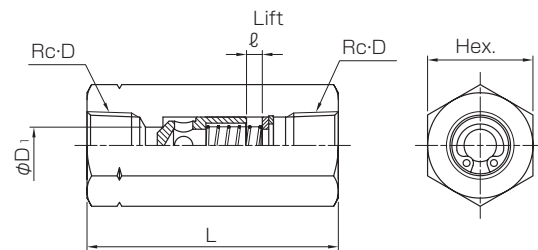
① ② ③ ④

①	Name	In-line check valve
②	Screw type	02 : Rc1/4 03 : Rc3/8 04 : Rc1/2
③	Cracking pressure	04 : 0.04MPa
④	Model no.	31 : SUS spec (SUS303)

Specification

Max. pressure	25MPa
Proof pressure	45MPa
Material	SUS

Dimension

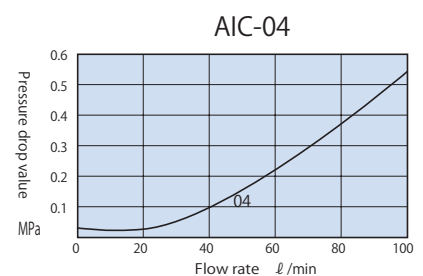
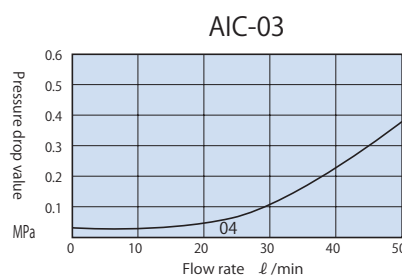
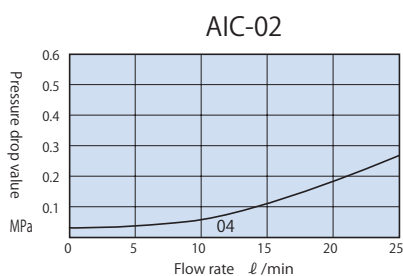


Model

Order no.	Model	Rc · D	L	D ₁	ℓ	Hex	Fluid	Weight
A055-202	AIC-02-04-31	Rc1/4	53	7	4	21	Pure water (Petroleum oil, Water-glycol based oil)	120g
A055-203	AIC-03-04-31	Rc3/8	62	9	4	26		220g
A055-204	AIC-04-04-31	Rc1/2	73	11	5	30		320g

Data sheet: Flow/pressure drop characteristics

Condition / Oil : ISO VG32 Oil temp. : 45 ± 5°C





บริษัท นานดีอินเตอร์เทรด จำกัด
NANDEE INTER-TRADE CO., LTD.

314, 316, 318, 320, 322 ซอยจันทน์ 32 ถนนจันทน์ แขวงทุ่งวัดดอน เขตสาทร กทม. 10120
Tel : 0-2675-8230 (Auto), 0-2675-8240 (Auto) Fax : 0-2212-1448, 0-2213-0360

LINE : @nandeeintertrade
f : nandeeintertrade
✉ : info@nandee.co.th
🌐 : www.nandee.co.th

LINE @

