

Complex gripper, flexible assembly

4.2

ROBOTICS PARTS CATALOG



บริษัท นานดีอินเตอร์เทรด จำกัด
NANDEE INTER-TRADE CO., LTD.

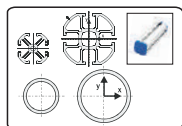
Tel : 0-2675-8230 (Auto), 0-2675-8240 (Auto)
Fax : 0-2212-1448, 0-2213-0360

f : *nandeeintertrade*

LINE : *@nandeeintertrade*

globe : *www.nandee.co.th*

目录内容 Contents



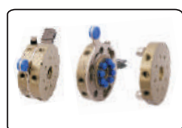
型材、钢管 P rofile、SUS Tube

01-05



支架模组 S tents Module

06-52



快换 Q uick Changer

53-96



夹具组件 G rip Module

97-180



气动剪刀 Air N ipper

181-207



真空组件 V acuum Module

208-244



附件 A ccessory Components

245-262

索引 | General Index

型材、钢管

P-型材、钢管
Profile、SUS Tube



PST-钢管
Sus Tube
页码/Page 1



PEP-型材
Extruded Profiles
页码/Page 2



PT-T型螺母
T-Nuts
页码/Page 3

支架模组

S-支架模组
Stents Module



SFP-型材固定板
Fixing Plate
页码/Page 6~8



SMB-模组固定件
Module Fixed Part
页码/Page 9~38



SV-吸盘支架
Vacuum Cups Bracket
页码/Page 39~43



SC-夹腿连接件
Clamp Leg Connector
页码/Page 44~49



SEA-弯臂连接件
Elbow Arm Connector
页码/Page 50~51



SBN-套筒螺母
Bush Nut
页码/Page 52

快换

Q-快换
Quick Changer



QCA-圆形自动快换
Automatic Quick Changer
页码/Page 53~78



QC-圆形手动快换
Round Quick Changer
页码/Page 79~90



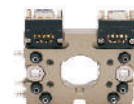
SIP-快换连接板
Quick Changer Connector
页码/Page 82~90



QCS-方形手动快换
Square Quick Changer
页码/Page 91



QCL-L形手动快换
Manual Quick Changer
页码/Page 92~94



QCA-方形自动快换
Automatic Quick Changer
页码/Page 96

夹具组件

G-夹具组件
Grip Module



GMH-气缸夹
Cylinder Gripper
页码/Page 97~100



GMHZL2-加长平行夹
Lengthen Parallel Gripper
页码/Page 98



GMXQ-气动滑台
Air Slide Table
页码/Page 105~113



GR-水口夹
Sprue Gripper
页码/Page 114~155

索引 | General index



GS-缓冲支架
Buffer Support
页码/Page 162~163



GMP-模具定位器
Mould Positioner
页码/Page 164



GN-气动针夹
Pneumatic Needle Gripper
页码/Page 166-167



GBD-鼓胀器
Bulging Device
页码/Page 168~169



GF-气动拨指
Pneumatic Finger Gripper
页码/Page 170~177



GO-单动拨指
One Finger Angular Pneumatic Grippers
页码/Page 178

NEW



VSH-吸盘
Vacuum Cups
页码/Page 212~214

NEW



SAF-吸盘
Vacuum Cups
页码/Page 215~216



VM-吸盘金具转接头
Vacuum Cup Connector
页码/Page 217~225

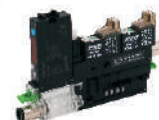


VF-金具缓冲杆
System Suction Buffer Body
页码/Page 226~229



VUVG-电磁阀
Solenoid Valve
页码/Page 235

NEW



Compact-真空模组
Vacuum Module
页码/Page 236~244

气剪

N-气动剪刀
Air Nipper



N-剪刀本体
Air Nipper Body
页码/Page 186~187



N-剪刀刀头
Air Nipper Blade
页码/Page 188~205



NT-剪刀引拔件
Air Nipper Bracket
页码/Page 207

真空件

V-真空组件
Vacuum Module

NEW



FGA-吸盘
Vacuum Cup
页码/Page 208~211

附件

A-附件
Accessory Components



ASC-信号盒
Signal Boxes
页码/Page 245

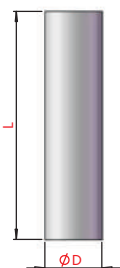


AJB-分线盒
Junction Box
页码/Page 246~249



ARJ-微型减压阀
Miniature Regulator
页码/Page 250

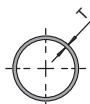
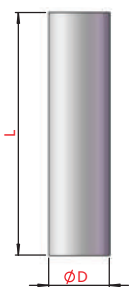
不锈钢管 Sus Tube



钢管端盖
Tube plugs

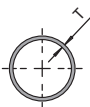
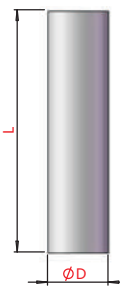
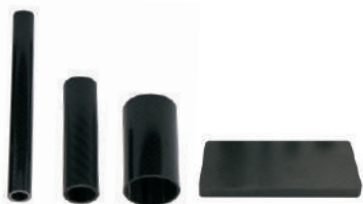
| 货号(PN) | 型号(Model) | D(mm) | L(mm) | T(mm) | 重量(Weight) | 端盖(Plugs) |
|----------|------------|-------|-------|-------|------------|--|
| 4.Y00040 | PST8-1500 | Ø8 | 1500 | 0.6 | 215g | 1.Y03375(红色) |
| 4.Y00021 | PST12-1500 | Ø12 | 1500 | 0.6 | 339g | 1.Y03636(灰色) 1.Y03638(蓝色) 1.Y03640(黑色) |
| 4.Y00022 | PST20-1500 | Ø20 | 1500 | 0.8 | 560g | 1.Y03637(灰色) 1.Y03639(蓝色) 1.Y03641(黑色) |

铝管 Aluminium Tube



| 货号(PN) | 型号(Model) | D(mm) | L(mm) | T(mm) | 重量(Weight) |
|----------|------------|-------|-------|-------|------------|
| 4.Y00468 | PAT20-1000 | Ø20 | 1000 | 2.0 | 308g |
| 4.Y10972 | PAT20-2000 | Ø20 | 2000 | 2.0 | 616g |
| 4.Y00469 | PAT30-1000 | Ø30 | 1000 | 2.5 | 558g |
| 4.Y10973 | PAT30-2000 | Ø30 | 2000 | 2.5 | 1116g |
| 4.Y10950 | PAT25-1000 | Ø25 | 1000 | 2.5 | 467g |
| 4.Y10974 | PAT25-2000 | Ø25 | 2000 | 2.5 | 934g |
| 4.Y00538 | PAT40-1000 | Ø40 | 1000 | 2.5 | 799g |
| 4.Y10975 | PAT40-2000 | Ø40 | 2000 | 2.5 | 1558g |

碳纤维管 Carbon fiber Tube



| 货号(PN) | 型号(Model) | D(mm) | L(mm) | T(mm) | 重量(Weight) |
|----------|------------|-------|-------|-------|------------|
| 4.Y10960 | PCT8-1000 | Ø8 | 1000 | 0.8 | 31g |
| 4.Y10961 | PCT8-2000 | Ø8 | 2000 | 0.8 | 62g |
| 4.Y10962 | PCT12-1000 | Ø12 | 1000 | 1.0 | 59g |
| 4.Y10963 | PCT12-2000 | Ø12 | 2000 | 1.0 | 118g |
| 4.Y10964 | PCT20-1000 | Ø20 | 1000 | 1.2 | 103g |
| 4.Y10965 | PCT20-2000 | Ø20 | 2000 | 1.2 | 206g |
| 4.Y10966 | PCT25-1000 | Ø25 | 1000 | 1.5 | 169g |
| 4.Y10967 | PCT25-2000 | Ø25 | 2000 | 1.5 | 339g |
| 4.Y10968 | PCT30-1000 | Ø30 | 1000 | 1.5 | 236g |
| 4.Y10969 | PCT30-2000 | Ø30 | 2000 | 1.5 | 472g |
| 4.Y10970 | PCT40-1000 | Ø40 | 1000 | 2.5 | 431g |
| 4.Y10971 | PCT40-2000 | Ø40 | 2000 | 2.5 | 861g |

型材
钢管
Profile
SUS Tube

支架
模组
Stents
Module

快换
Quick
Changer

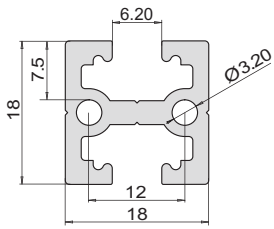
夹具
组件
Grip
Module

气动
剪刀
Air
Nipper

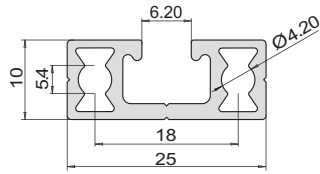
真空
组件
Vacuum
Module

附件
Accessory
Components

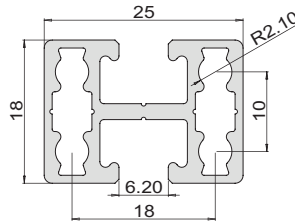
型材 Extruded Profiles



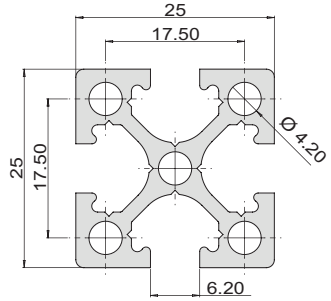
PEP1818



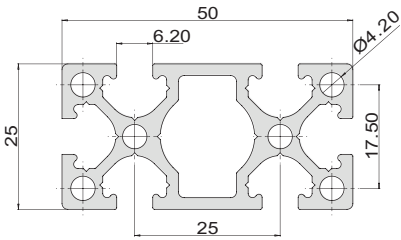
PEP2510



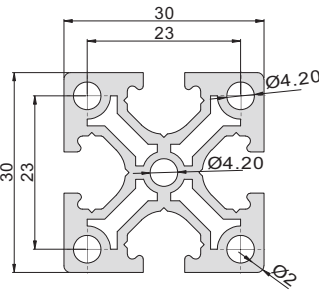
PEP2518



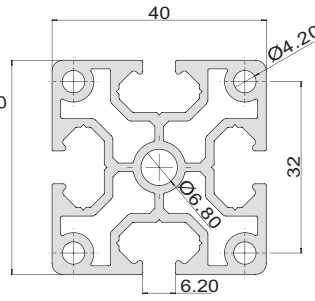
PEP2525



PEP5025



PEP3030

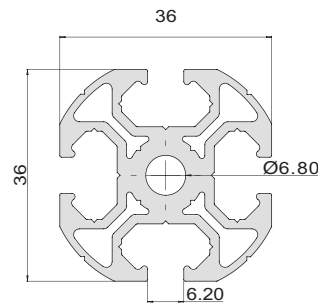


PEP4040



| 货号(PN) | 型号(Model) | 长度(Length) | 重量(Weight) | 端盖货号(Plugs PN) | 端盖型号(Plugs Model) |
|------------|--------------|------------|------------|----------------|-------------------|
| 4.Y00075 | PEP1818-1000 | 1.0m | 425g | 4.Y00517 | P1818 |
| 4.Y00076 | PEP2510-1000 | 1.0m | 310g | 4.Y00518 | P2510 |
| 4.Y00455 | PEP2518-1000 | 1.0m | 400g | 4.Y00069 | P2518 |
| 4.Y00050 | PEP2525-1000 | 1.0m | 610g | 4.Y00070 | P2525 |
| * 4.Y00051 | PEP2525-2000 | 2.0m | 1220g | | |
| 4.Y00056 | PEP5025-1000 | 1.0m | 1040g | 4.Y00071 | P5025 |
| * 4.Y00057 | PEP5025-2000 | 2.0m | 2080g | | |
| 4.Y00052 | PEP4040-1000 | 1.0m | 1300g | 4.Y00072 | P4040 |
| * 4.Y00053 | PEP4040-2000 | 2.0m | 2600g | | |
| 4.Y00540 | PEP3030-1000 | 1.0m | 650g | | P3030 |
| * 4.Y00541 | PEP3030-2000 | 2.0m | 1300g | | |

* 选件 Optional



PEP-3636

| 货号(PN) | 型号(Model) | 长度(Length) | 重量(Weight) | 端盖货号(Plugs PN) | 端盖型号(Plugs Model) |
|------------|--------------|------------|------------|----------------|-------------------|
| 4.Y00054 | PEP3636-1000 | 1.0m | 1168g | | |
| 4.Y00484 | PEP3636-1500 | 1.5m | 1752g | 4.Y00073 | P3636 |
| * 4.Y00055 | PEP3636-2000 | 2.0m | 2336g | | |

* 选件 Optional

型材 / SUS Tube

支架模组

快换

夹具组件

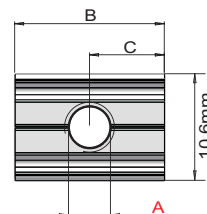
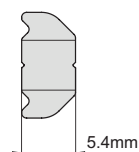
气动剪刀

真空组件

附件

T型螺母 T-Nuts

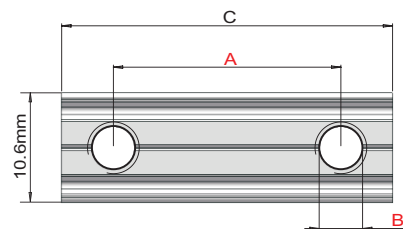
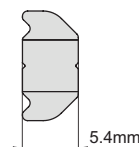
型材
SUS Tube



支架
模组

| 货号(PN) | 型号(Model) | A(mm) | B(mm) | C(mm) | 重量(Weight) |
|----------|-----------|-------|-------|-------|------------|
| 7.Y00651 | PTN-M4 | M4 | 15 | 7.5 | 5g |
| 7.Y00425 | PTN-M5 | M5 | 15 | 7.5 | 5g |
| 7.Y00652 | PTN-M6 | M6 | 15 | 7.5 | 5g |

快换
Quick Changer



夹具
组件

| 货号(PN) | 型号(Model) | A(mm) | B(mm) | C(mm) | 重量(Weight) |
|----------|-----------|-------|-------|-------|------------|
| 7.Y00653 | PTN-M4P8 | 8 | M4 | 16 | 5g |
| 7.Y00654 | PTN-M5P10 | 10 | M5 | 20 | 7g |
| 7.Y00655 | PTN-M5P15 | 15 | M5 | 25 | 9g |
| 7.Y00656 | PTN-M5P17 | 17 | M5 | 25 | 9g |
| 7.Y00657 | PTN-M5P22 | 22 | M5 | 32 | 11g |
| 7.Y00658 | PTN-M5P25 | 25 | M5 | 35 | 13g |
| 7.Y00659 | PTN-M5P28 | 28 | M5 | 38 | 14g |
| 7.Y00660 | PTN-M5P30 | 30 | M5 | 40 | 15g |
| 7.Y00661 | PTN-M5P35 | 35 | M5 | 45 | 16g |
| 7.Y00662 | PTN-M5P40 | 40 | M5 | 50 | 18g |
| 7.Y00663 | PTN-M5P50 | 50 | M5 | 60 | 22g |
| 7.Y00664 | PTN-M5P60 | 60 | M5 | 70 | 26g |
| 7.Y00665 | PTN-M5P90 | 90 | M5 | 100 | 38g |

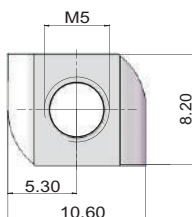
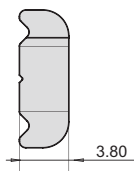
气动
剪刀

真空
组件

附加螺母 Last-Minute Nut

当已装配好的治具需要增加一些配件时可以使用。

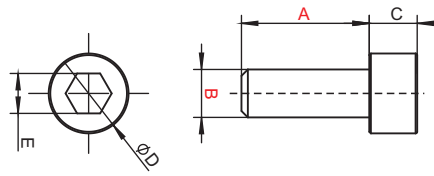
To be used when you need to add something to an already assembled EOAT.



附件
Accessory Components

| 货号(PN) | 型号(Model) | 重量(Weight) |
|----------|-----------|------------|
| 7.Y00805 | PTN-M5R | 2g |

不锈钢螺丝 Sus Screws



| 货号(PN) | 型号(Model) | A(mm) | B(mm) | C(mm) | D(mm) | E(mm) | 重量(Weight) |
|----------|-----------|-------|-------|-------|-------|-------|------------|
| 1.Y03908 | PTC-M4L10 | 10 | | | | | 1.6g |
| 1.Y03848 | PTC-M4L12 | 12 | | | | | 1.8g |
| 1.Y02752 | PTC-M4L14 | 14 | | | | | 1.9g |
| 1.Y04073 | PTC-M4L16 | 16 | | | | | 2.0g |
| 1.Y05846 | PTC-M4L18 | 18 | M4 | 4 | 6.8 | 3.2 | 2.1g |
| 1.Y04000 | PTC-M4L20 | 20 | | | | | 2.2g |
| 1.Y06307 | PTC-M4L22 | 22 | | | | | 2.5g |
| 1.Y05319 | PTC-M4L25 | 25 | | | | | 2.7g |
| 1.Y04294 | PTC-M5L10 | 10 | | | | | 2.9g |
| 1.Y03850 | PTC-M5L12 | 12 | | | | | 3.1g |
| 1.Y04528 | PTC-M5L14 | 14 | | | | | 3.3g |
| 1.Y03849 | PTC-M5L16 | 16 | | | | | 3.6g |
| 1.Y05925 | PTC-M5L18 | 18 | | | | | 3.8g |
| 1.Y03909 | PTC-M5L20 | 20 | | | | | 4.0g |
| 1.Y06257 | PTC-M5L22 | 22 | M5 | 5 | 8.3 | 4.1 | 4.3g |
| 1.Y03851 | PTC-M5L25 | 25 | | | | | 4.7g |
| 1.Y04469 | PTC-M5L30 | 30 | | | | | 5.3g |
| 1.Y04580 | PTC-M5L35 | 35 | | | | | 5.9g |
| 1.Y04898 | PTC-M5L40 | 40 | | | | | 6.5g |
| 1.Y04968 | PTC-M5L50 | 50 | | | | | 7.6g |
| 1.Y05391 | PTC-M5L60 | 60 | | | | | 10.0g |
| 1.Y04288 | PTC-M6L10 | 10 | | | | | 4.0g |
| 1.Y03910 | PTC-M6L12 | 12 | | | | | 4.6g |
| 1.Y04153 | PTC-M6L14 | 14 | | | | | 5.2g |
| 1.Y02753 | PTC-M6L16 | 16 | | | | | 5.5g |
| 1.Y07729 | PTC-M6L18 | 18 | M6 | 6 | 10 | 5.3 | 5.7g |
| 1.Y04076 | PTC-M6L20 | 20 | | | | | 6.1g |
| 1.Y06227 | PTC-M6L25 | 25 | | | | | 6.9g |
| 1.Y04001 | PTC-M6L30 | 30 | | | | | 7.7g |
| 1.Y03911 | PTC-M6L35 | 35 | | | | | 8.6g |

型材 / SUS Tube

支架模组
Stents Module

快换
Quick Changer

夹具组件
Grip Module

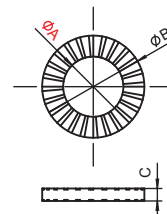
气动剪刀
Air Nipper

真空组件
Vacuum Module

附件
Accessory Components

双齿平垫 Single Hole Shim

型材
SUS Tube
钢管



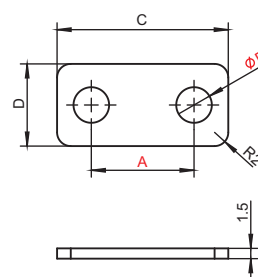
支架
模组
Stents Module

| 货号(PN) | 型号(Model) | A(mm) | B(mm) | C(mm) | 重量(Weight) |
|----------|-----------|-------|-------|-------|------------|
| 1.Y03853 | PTS-M4 | 4.5 | 7 | 0.45 | 0.07g |
| 1.Y03852 | PTS-M5 | 5.5 | 9 | 0.55 | 0.17g |
| 1.Y03854 | PTS-M6 | 6.5 | 10 | 0.65 | 0.20g |

快换
Quick Changer

双孔平垫 Double Holes Shim

夹具
组件
Grip Module



气动
剪刀
Air Nipper

| 货号(PN) | 型号(Model) | A(mm) | B(mm) | C(mm) | D(mm) | 重量(Weight) |
|----------|-----------|-------|-------|-------|-------|------------|
| 4.Y00522 | PTD-M4P8 | 8 | 4.5 | 16 | 12 | 1.8g |
| 4.Y00523 | PTD-M5P10 | 10 | 5.5 | 20 | 12 | 2.2g |
| 4.Y00524 | PTD-M5P15 | 15 | 5.5 | 25 | 12 | 2.5g |
| 4.Y00525 | PTD-M5P17 | 17 | 5.5 | 25 | 12 | 3.0g |
| 4.Y00526 | PTD-M5P22 | 22 | 5.5 | 32 | 12 | 3.3g |
| 4.Y00527 | PTD-M5P25 | 25 | 5.5 | 35 | 12 | 3.5g |

真空
组件
Vacuum Module

附件
Accessory Components

A Global Famous Brand
An International Excellent Enterprise



บริษัท นานดีอินเตอร์เทรด จำกัด
NANDEE INTER-TRADE CO., LTD.

Tel : 0-2675-8230 (Auto), 0-2675-8240 (Auto)

Fax : 0-2212-1448, 0-2213-0360

 : *nandeeintertrade*

 : *@nandeeintertrade*

 : *www.nandee.co.th*