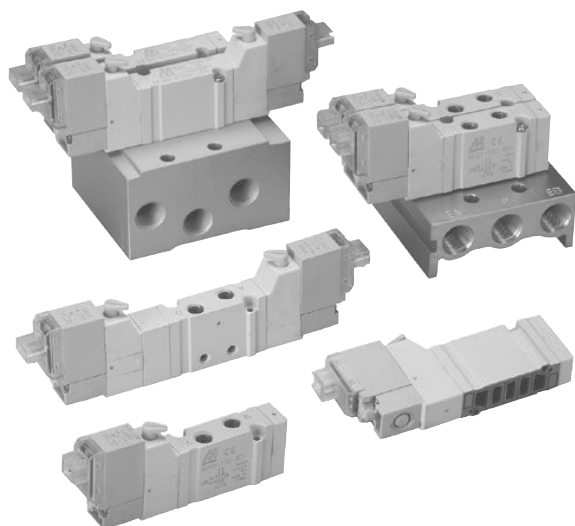


# PTV-100 series



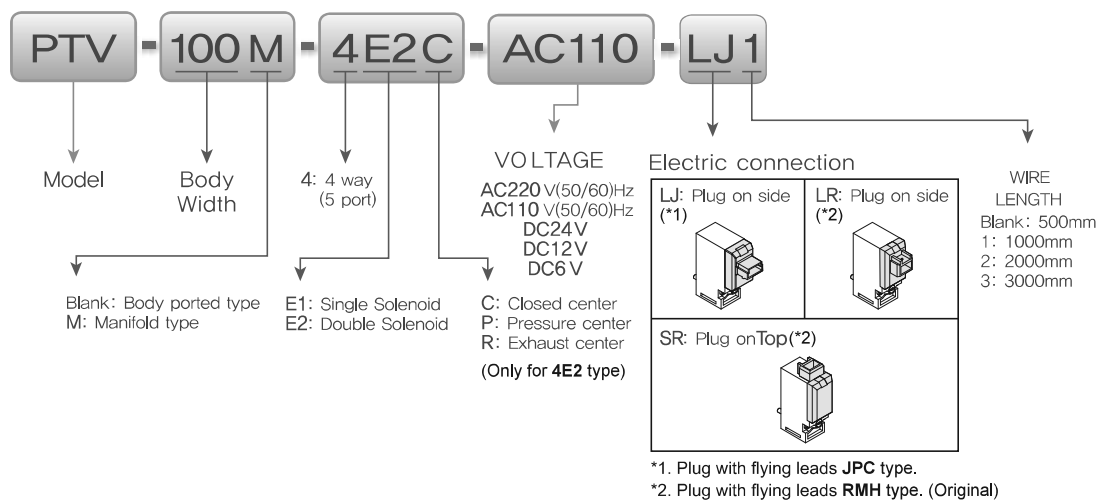
## Caution

- Don't continuous energizing for about 2 hours or more.
- The total energizing time of a day don't exceeds the total non-energizing time even if it is intermittent energizing.

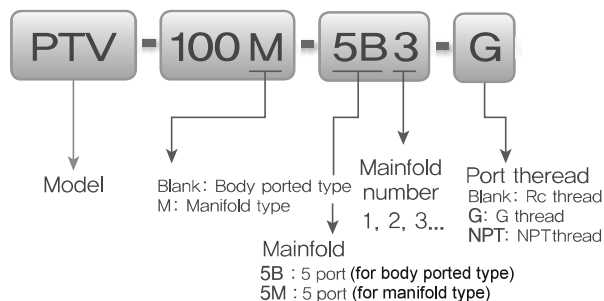
## ■ Specification

Model	4E1	4E2	4E2 C,P,R
Bore No.	M5		
Port size	M5×0,8		
No. of port	5		
No. of position	2	3	
Medium	Air		
Operating persure range	0,2~0,7 MPa		
Proof pressure	1 MPa		
Effective orifice	Body ported	4,5 mm <sup>2</sup>	
	Manifold	4,5 mm <sup>2</sup>	4,5 / 5 / 4,5 mm
Reponse time	12 ms	15 ms	
Ambient temperature	+5~+50° C		
Max. operating frequency	5 Hz		
Voltage	AC 110V, 220V (50/60)Hz, DC24/12/6V		
Power consumption	AC=1.6/2.5VA, DC6=1.2W, DC12/24=0.55W		
Availablevoltage range	± 10%		
Insulation class	B class		
Weight	30 g	44 g	59 g

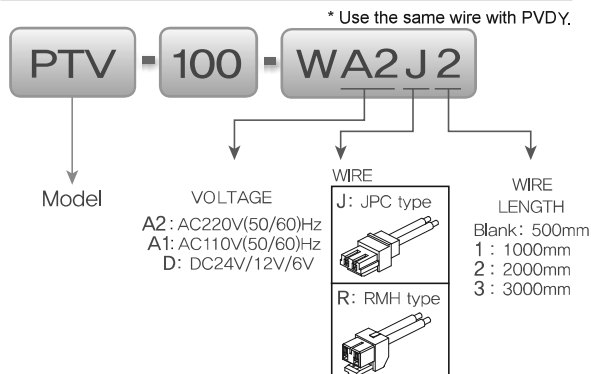
## Order example of valve



## Order example of manifold

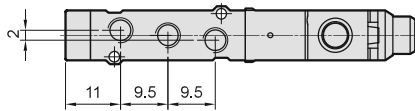
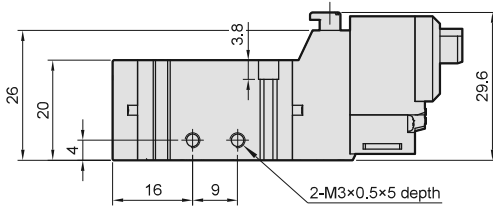
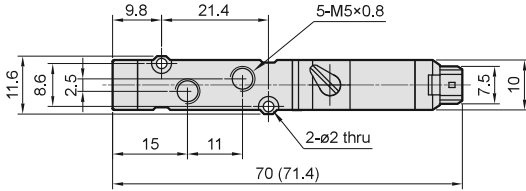
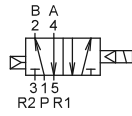


## Order example of wire

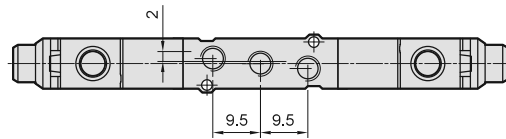
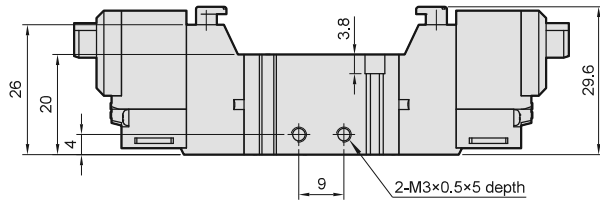
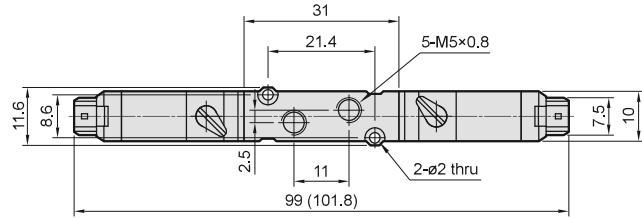
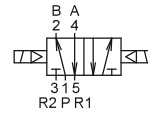


# Dimensions

## PTV-100-4E1

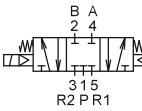


## PTV-100-4E2

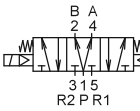


## PTV-100-4E2C.P.R

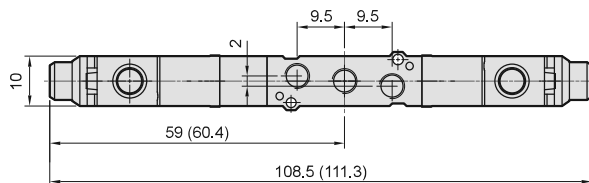
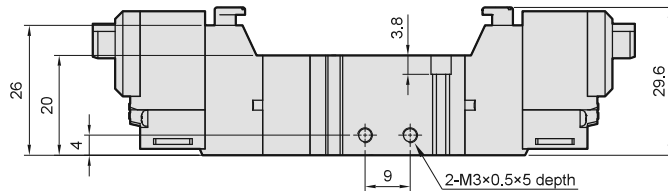
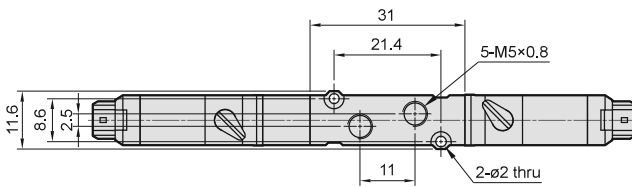
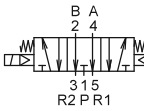
### PTV-100-4E2C



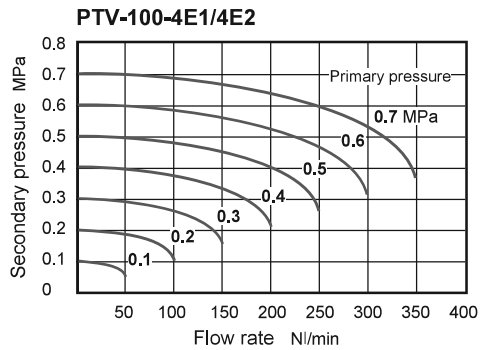
### PTV-100-4E2P



### PTV-100-4E2R



## Flow features

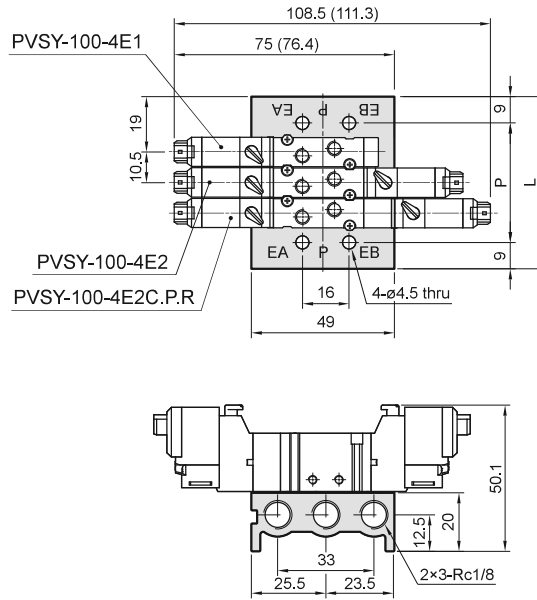


( ) : Dimension for LJ plug type.

# Manifold

## PTV-100-5B\*

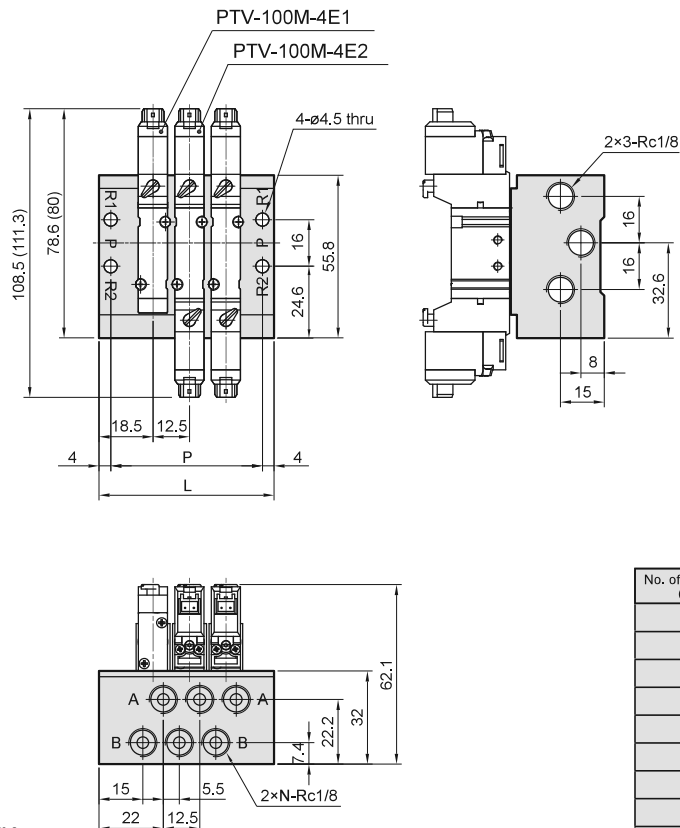
5 port (for body ported type)



No. of stations	P	L
2	30.5	48.5
3	41	59
4	51.5	69.5
5	62	80
6	72.5	90.5
7	83	101
8	93.5	111.5
9	104	122
10	114.5	132.5

## PTV-100M-5M\*

5 port (for manifold type)

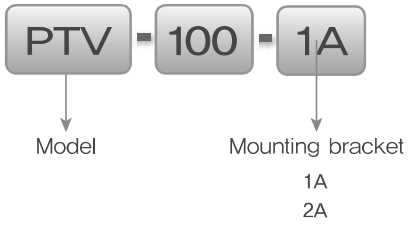


No. of stations (N)	P	L
2	39.5	47.5
3	52	60
4	64.5	72.5
5	77	85
6	89.5	97.5
7	102	110
8	114.5	122.5
9	127	135
10	139.5	147.5

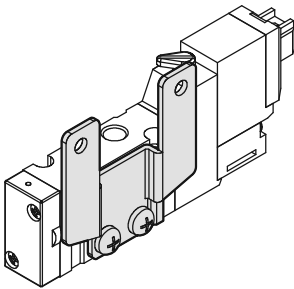
( ): Dimension for LJ plug type.

# Mounting bracket

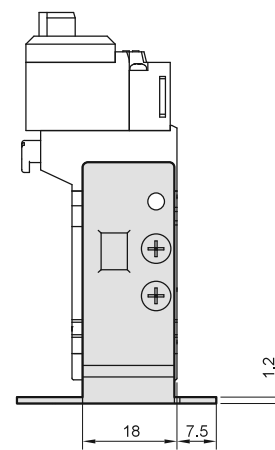
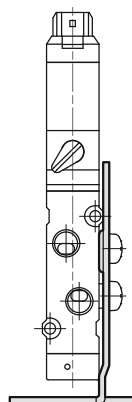
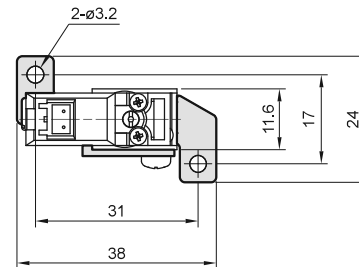
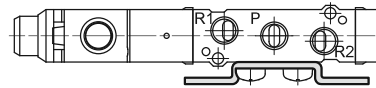
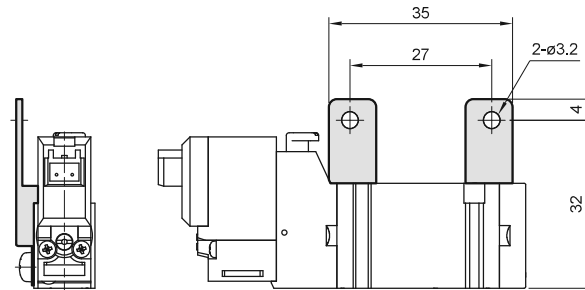
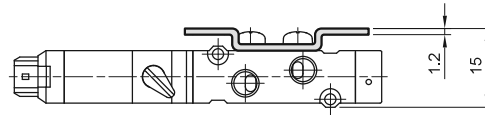
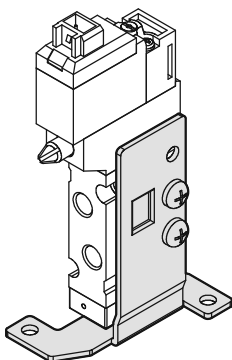
## Order example of bracket



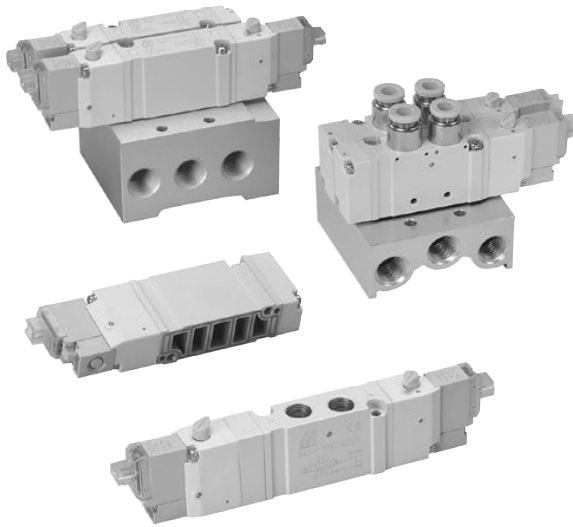
**PTV-100-1A**



**PTV-100-2A**



# PTV-156 series



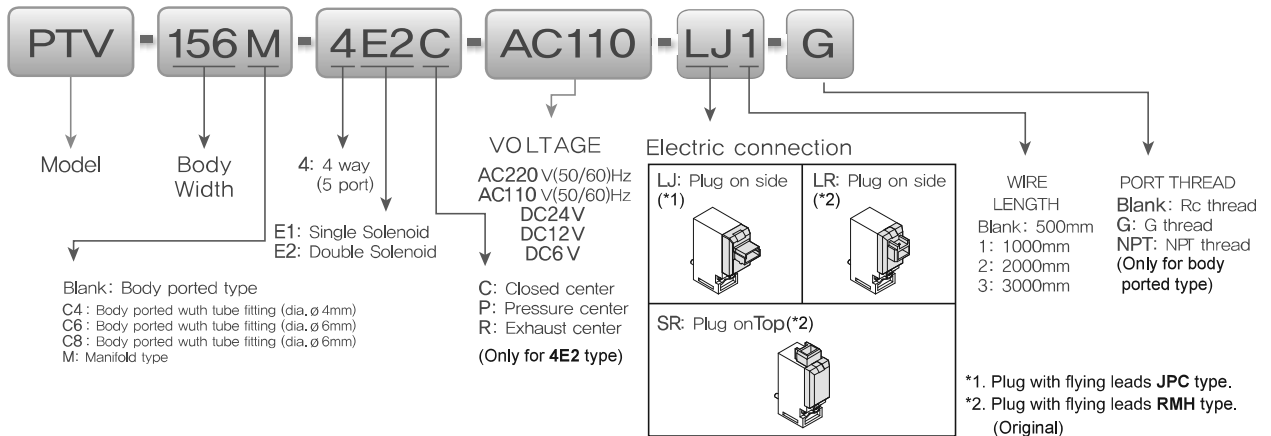
## Caution

- Don't continuous energizing for about 2 hours or more.
- The total energizing time of a day don't exceeds the total non-energizing time even if it is intermittent energizing.

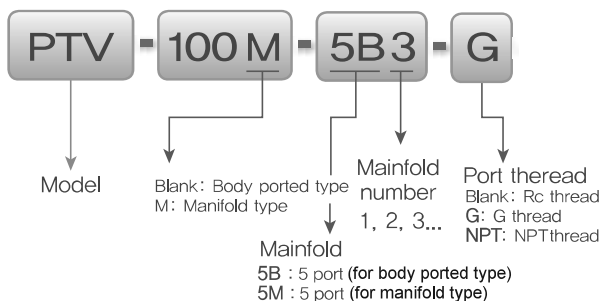
## ■ Specification

Model	4E1	4E2	4E2 C, P, R
Bore No.	6A		
Port size	Rc1/8		
No. of port	5		
No. of position	2	3	
Medium	Air		
Operating perssure range	0.15~0.7 MPa		0.2~0.7 MPa
Proof pressure	1 MPa		
Effective orifice	Body ported	11 mm <sup>2</sup>	9.5 / 14.6 / 9.5 mm <sup>2</sup>
	Manifold	10 mm <sup>2</sup>	7.5 / 13 / 8 mm <sup>2</sup>
Reponse time	19 ms		20 ms
Ambient temperature	+5~+50° C		
Max. operating frequency	5 Hz		
Voltage	AC110V, 220V (50/60)Hz, DC24/12/6V		
Power consumption	AC=1,6/2,5VA, DC6=1,2W, DC12/24=0,55W		
Available voltage range	±10%		
Insulation class	B class		
Weight	63 g	82 g	102 g

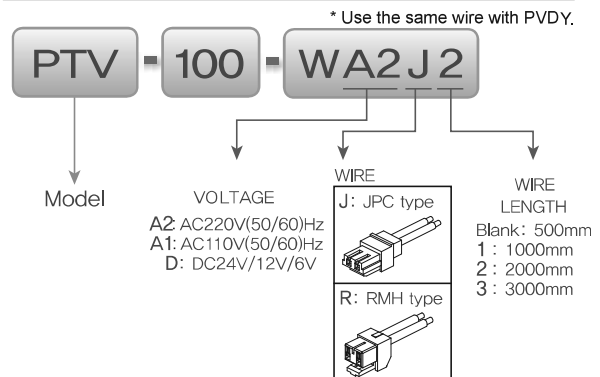
## Order example of valve



## Order example of manifold

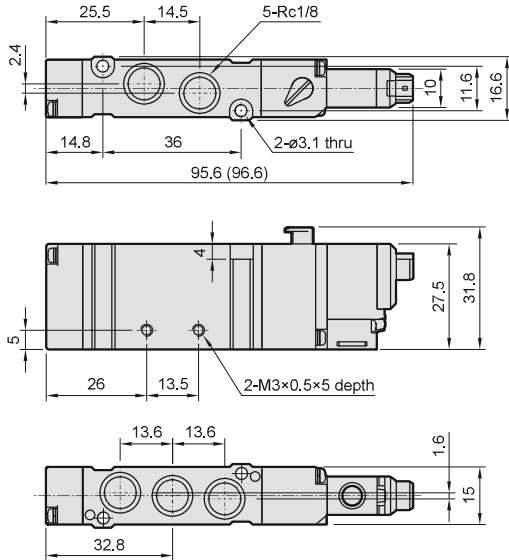
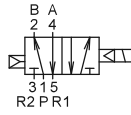


## Order example of wire

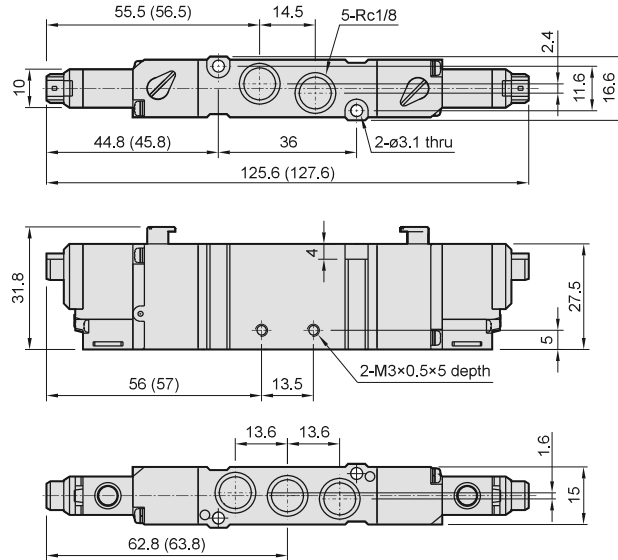
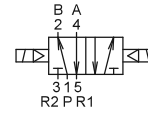


# Dimensions

## PTV-156-4E1

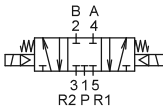


## PTV-156-4E2

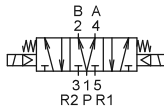


## PTV-156-4E2C, P, R

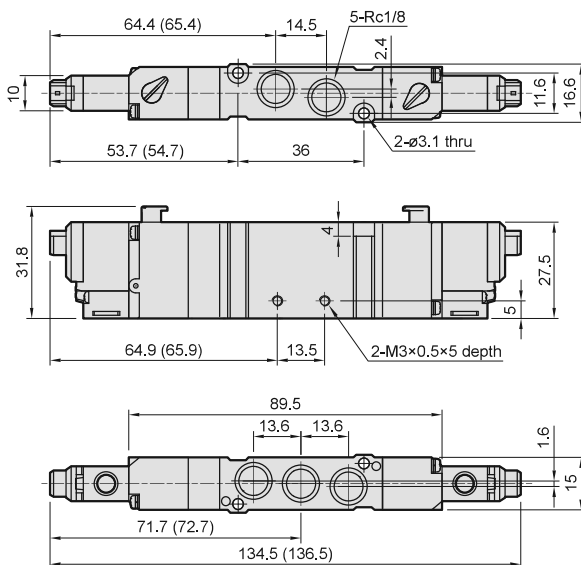
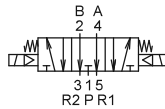
### PTV-156-4E2C



### PTV-156-4E2P

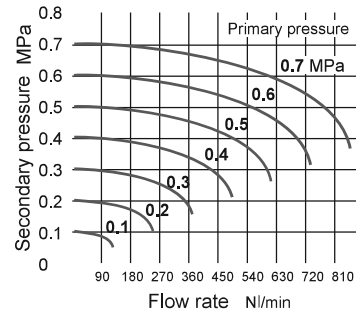


### PTV-156-4E2R

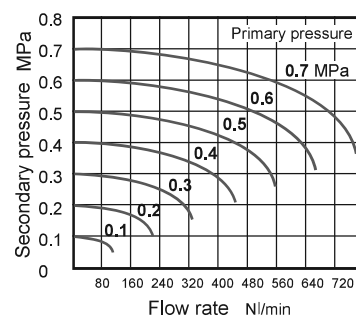


## Flow features

### PTV-156-4E1/4E2



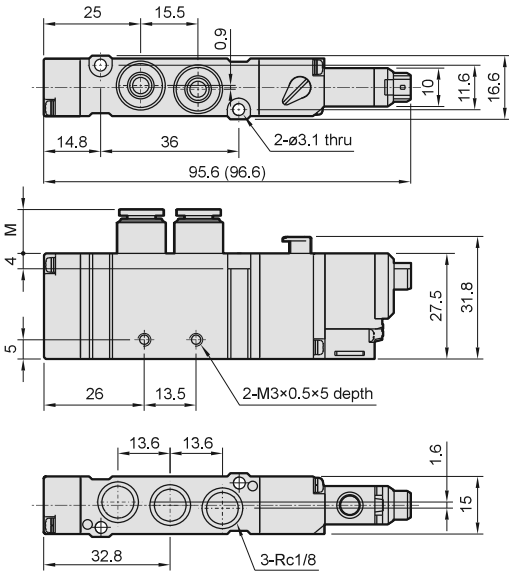
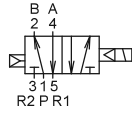
### PTV-156M-4E1/4E2



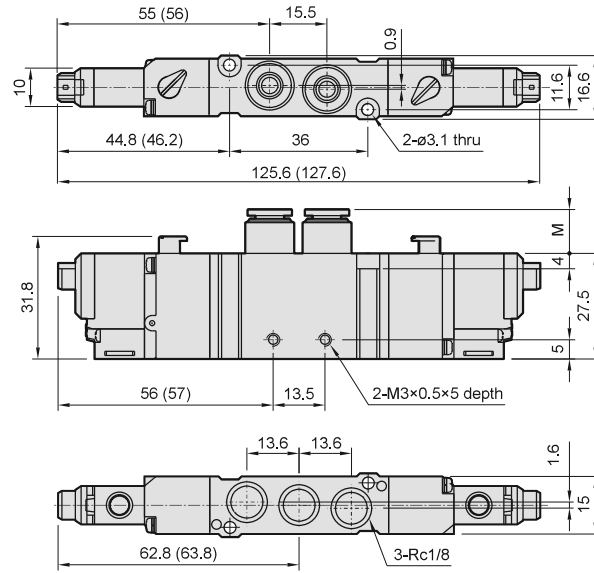
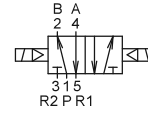
( ): Dimension for LJ plug type.

# Dimensions

## PTV-156C\*-4E1

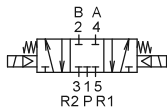


## PTV-156C\*-4E2

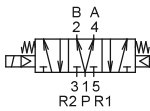


## PTV-156C\*-4E2C,P,R

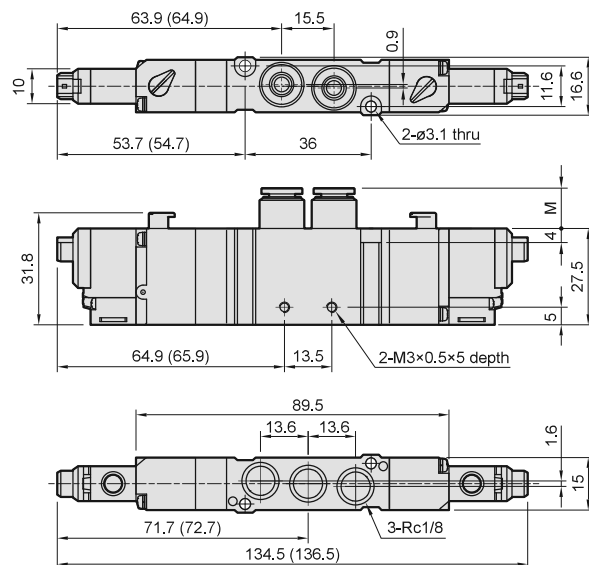
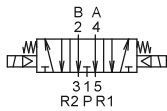
### PTV-156-4E2C



### PTV-156-4E2P



### PTV-156-4E2R

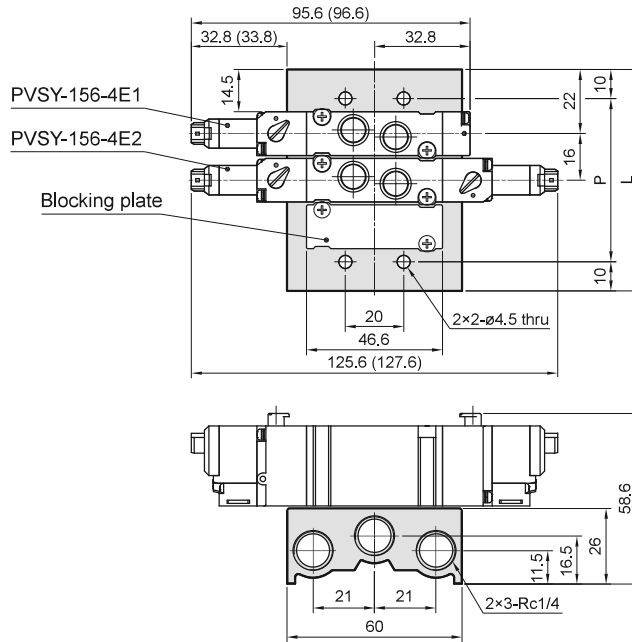


Code	M
C4 ( $\varnothing 4$ )	(13.8)
C6 ( $\varnothing 6$ )	(14.7)
C8 ( $\varnothing 8$ )	(19.3)

( ): Dimension for LJ plug type.

## PTV-156-5B\*

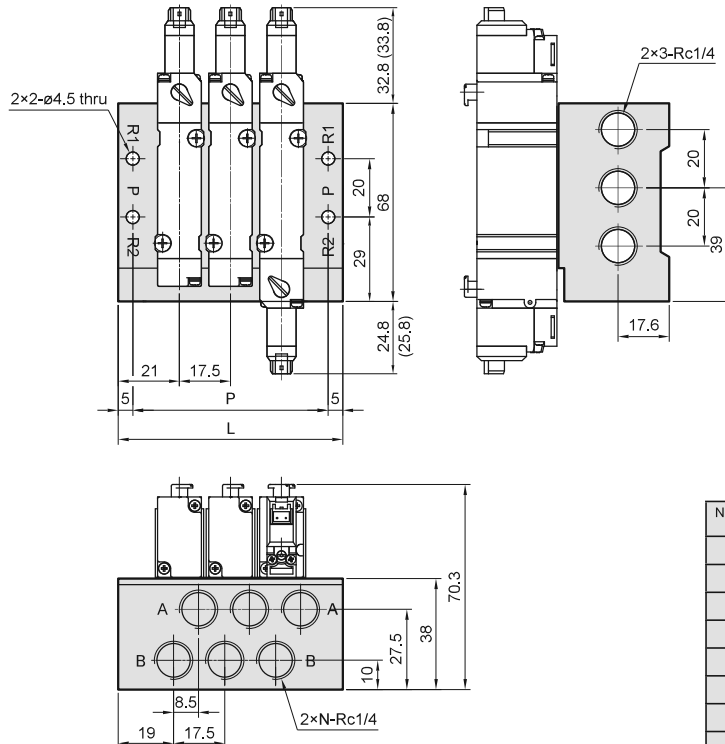
5 port (for body ported type)



No. of stations	P	L
2	40	60
3	56	76
4	72	92
5	88	108
6	104	124
7	120	140
8	136	156
9	152	172
10	168	188

## PTV-156M-5M\*

5 port (for manifold type)

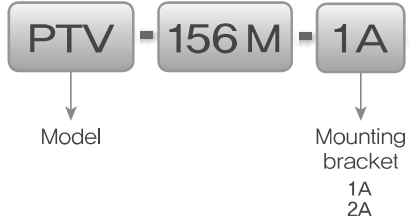


No. of stations (N)	P	L
2	49.5	59.5
3	67	77
4	84.5	94.5
5	102	112
6	119.5	129.5
7	137	147
8	154.5	164.5
9	172	182
10	189.5	199.5

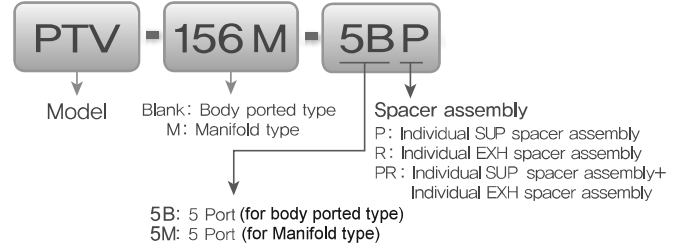
( ) : Dimension for LJ plug type.

# Mounting bracket & Spacer assembly

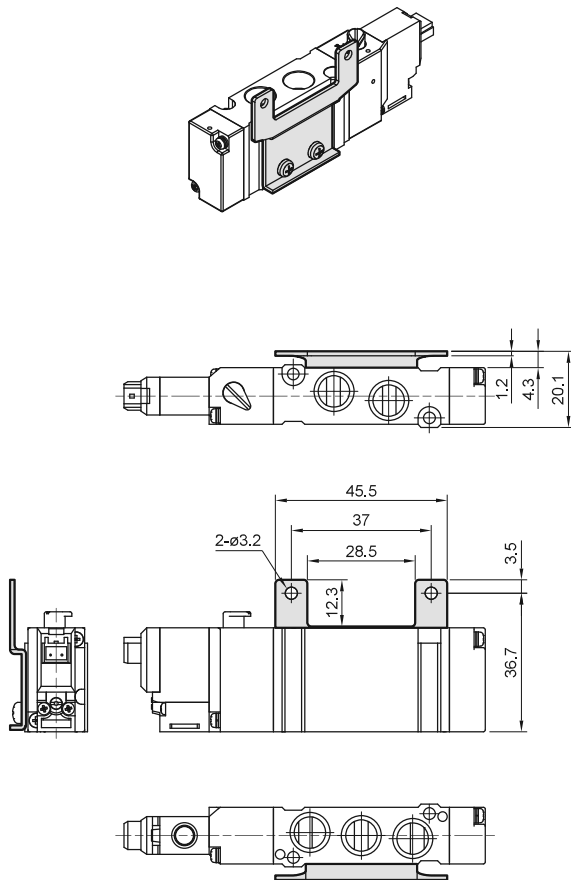
## Order example of bracket



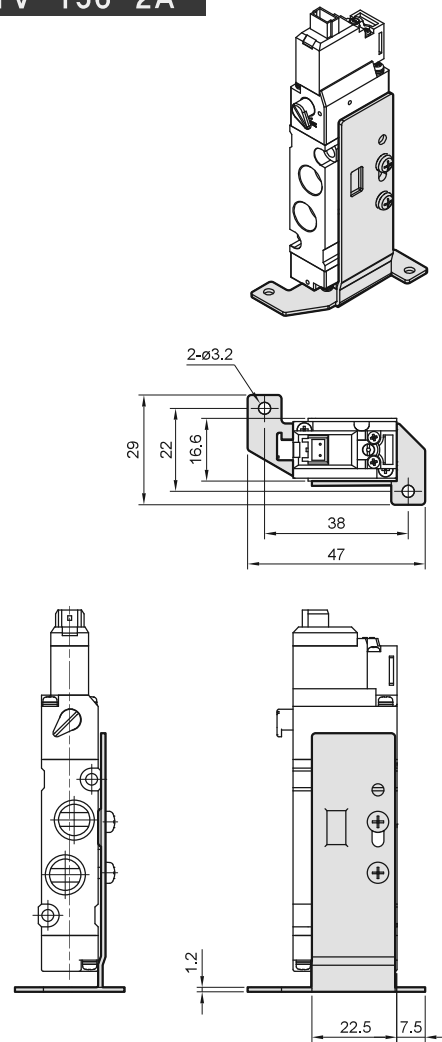
## Order example of spacer assembly



### PTV-156-1A



### PTV-156-2A

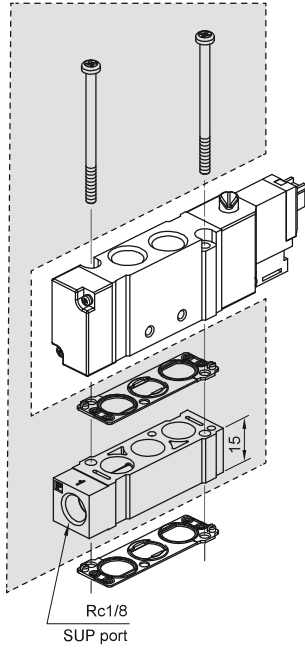


# Spacer assembly

## ■ for body ported type

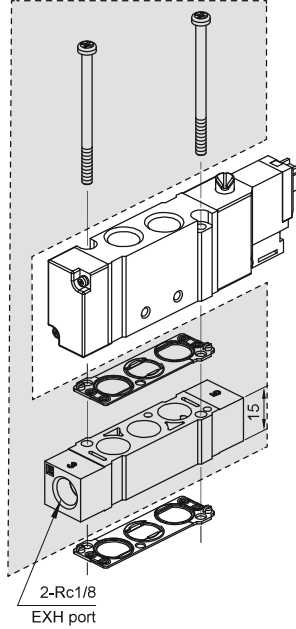
### PTV-156-5BP

Individual SUP spacer assembly



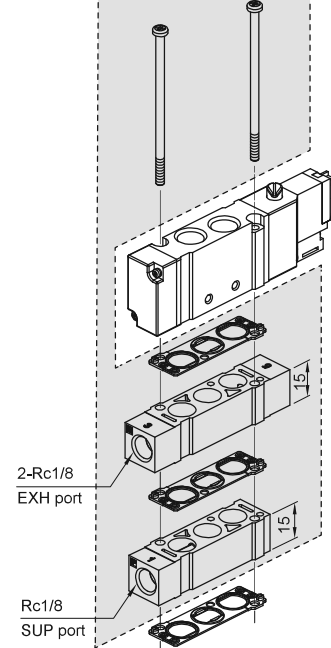
### PTV-156-5BR

Individual EXH spacer assembly



### PTV-156-5BPR

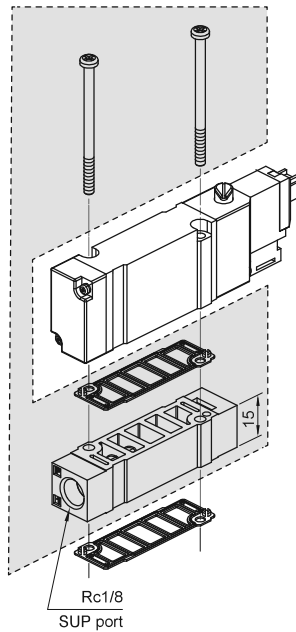
Individual SUP spacer assembly+  
Individual EXH spacer assembly



## ■ for manifold type

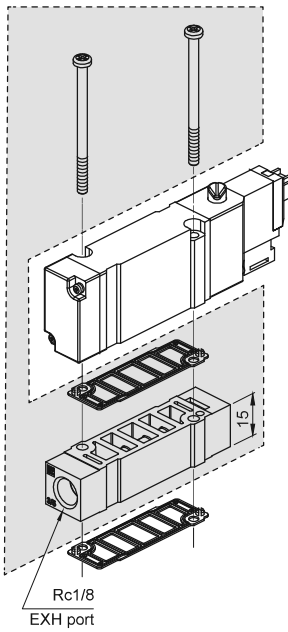
### PTV-156M-5MP

Individual SUP spacer assembly



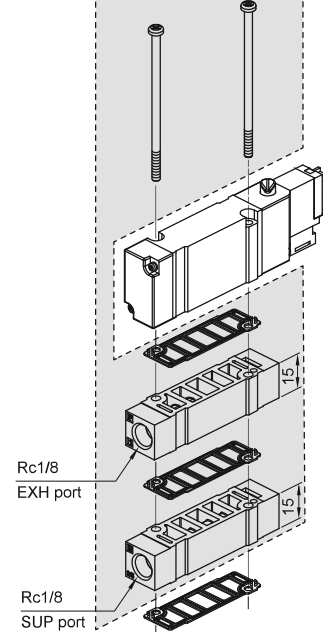
### PTV-156M-5MR

Individual EXH spacer assembly

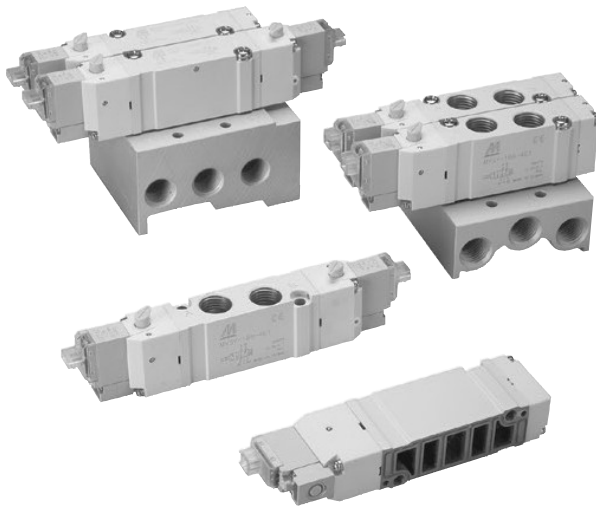


### PTV-156M-5MPR

Individual SUP spacer assembly+  
Individual EXH spacer assembly



# PTV-100 series



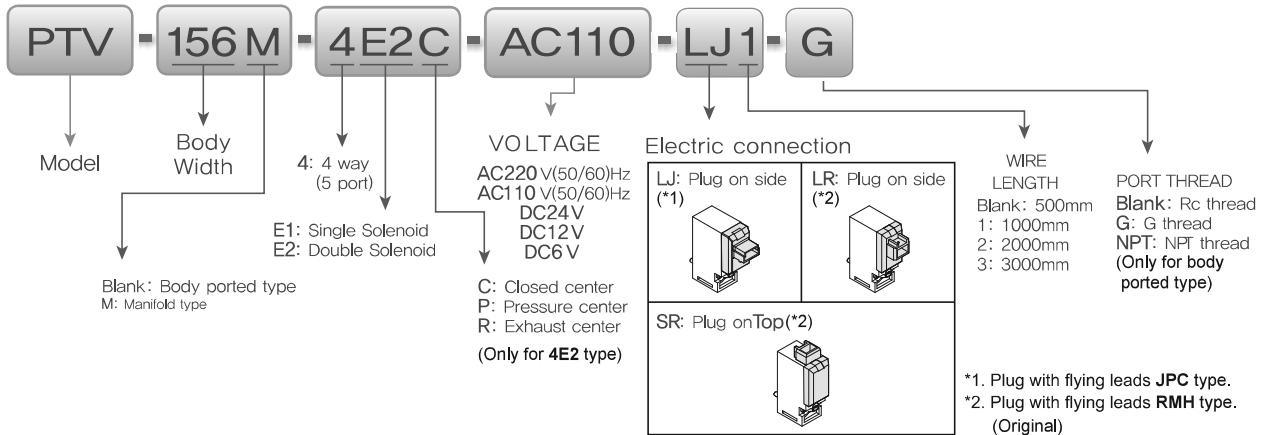
## Caution

- Don't continuous energizing for about 2 hours or more.
- The total energizing time of a day don't exceeds the total non-energizing time even if it is intermittent energizing.

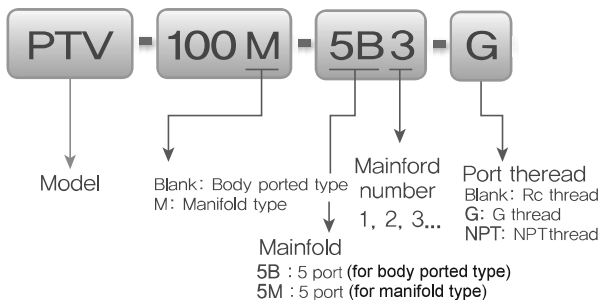
## Specification

Model		4E1	4E2	4E2 C, P, R
Bore No.		8A		
Port size		Rc1/4		
No. of port		5		
No. of position		2	3	
Medium		Air		
Operating perssure range		0,15~0.7 MPa		0,2~0.7 MPa
Proof pressure		1 MPa		
Effective orifice	Body ported	15 mm <sup>2</sup>		16,3/27/12,4 mm <sup>2</sup>
	Manifold	13 mm <sup>2</sup>		13,5/18,4/11 mm <sup>2</sup>
Reponse time		23 ms		50 ms
Ambient temperature		+5~+50° C		
Max. operating frequency		5 Hz		
Voltage		AC110V, 220V (50/60)Hz, DC24/12/6V		
Power consumption		AC=1,6/2,5VA, DC6=1,2W, DC12/24=0,55W		
Available voltage range		±10%		
Insulation class		B class		
Weight		77 g	102 g	106 g

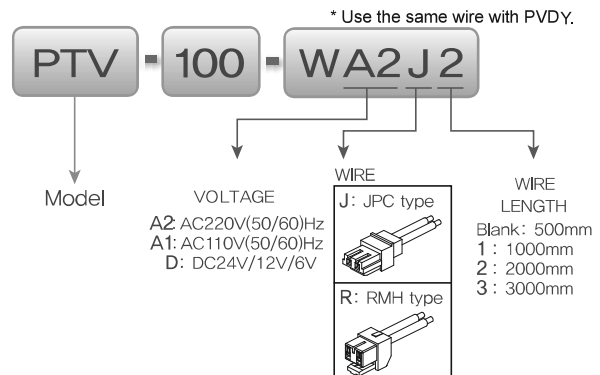
## Order example of valve



## Order example of manifold

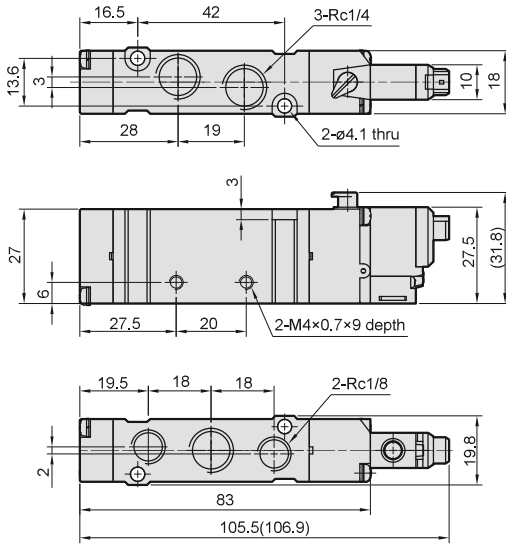
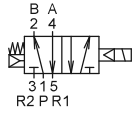


## Order example of wire

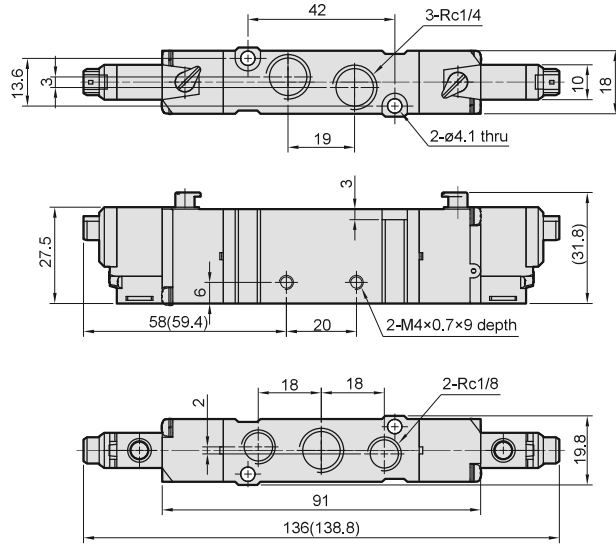
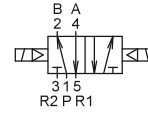


# Dimensions

## PTV-188-4E1



## PTV-188-4E2

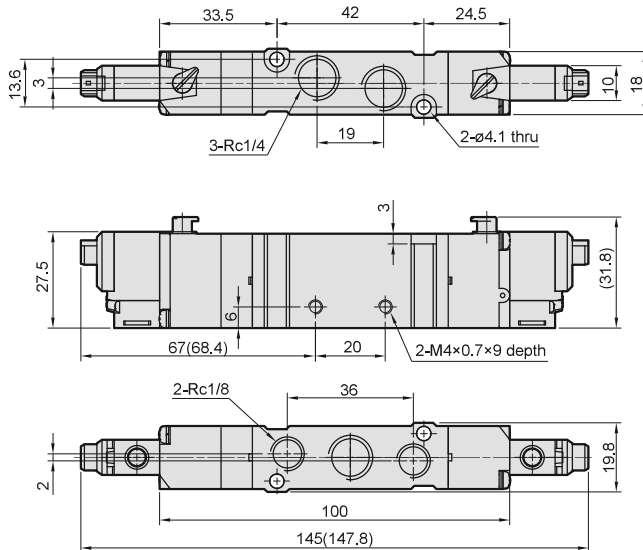
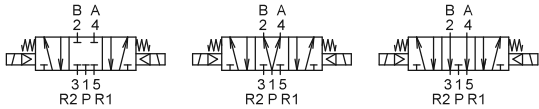


## PTV-188-4E2C.P.R

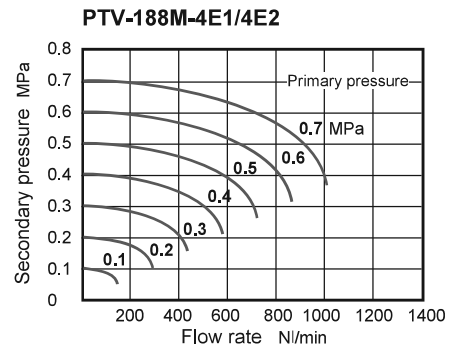
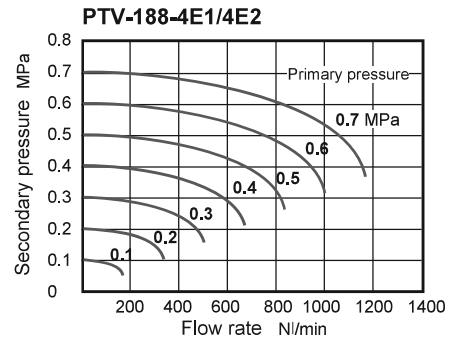
### PTV-188-4E2C

### PTV-188-4E2P

### PTV-188-4E2R



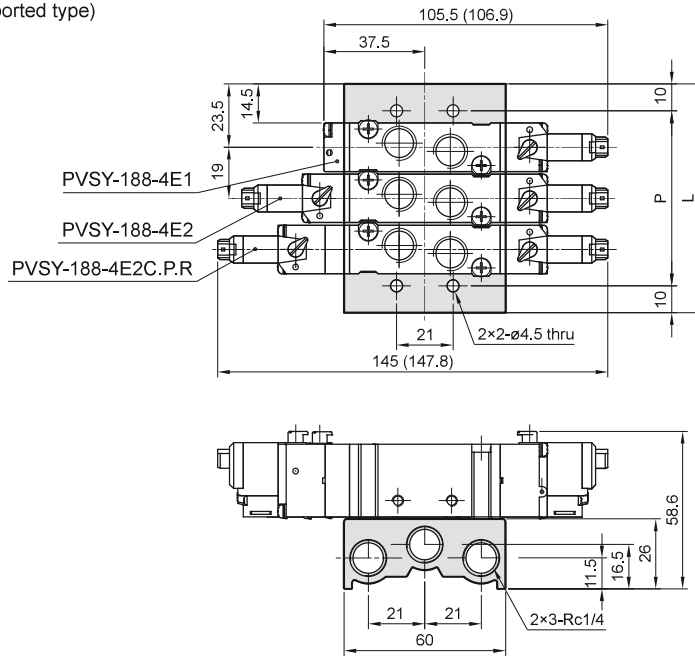
## Flow features



( ) : Dimension for LJ plug type.

**PTV-188-5B\***

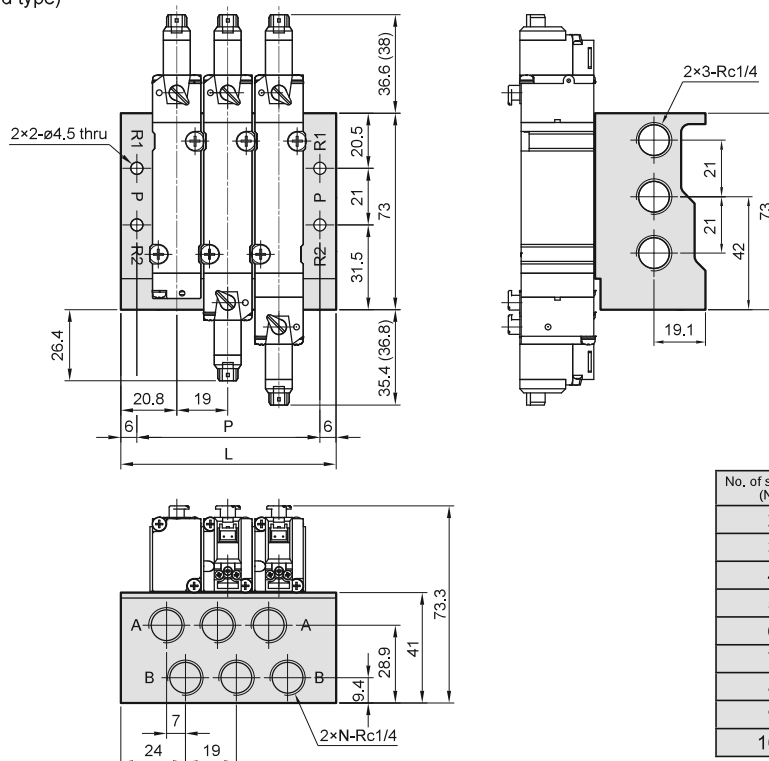
5 port (for body ported type)



No. of stations	P	L
2	46	66
3	65	85
4	84	104
5	103	123
6	122	142
7	141	161
8	160	180
9	179	199
10	198	218

**PTV-188M-5M\***

5 port (for manifold type)

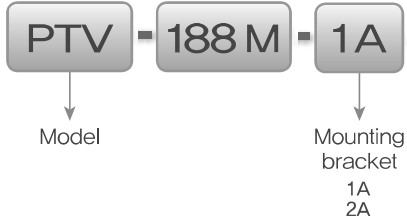


No. of stations (N)	P	L
2	49	61
3	68	80
4	87	99
5	106	118
6	125	137
7	144	156
8	163	175
9	182	194
10	201	213

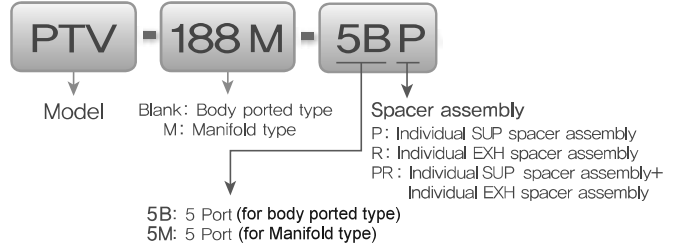
( ) : Dimension for LJ plug type.

# Mounting bracket & Spacer assembly

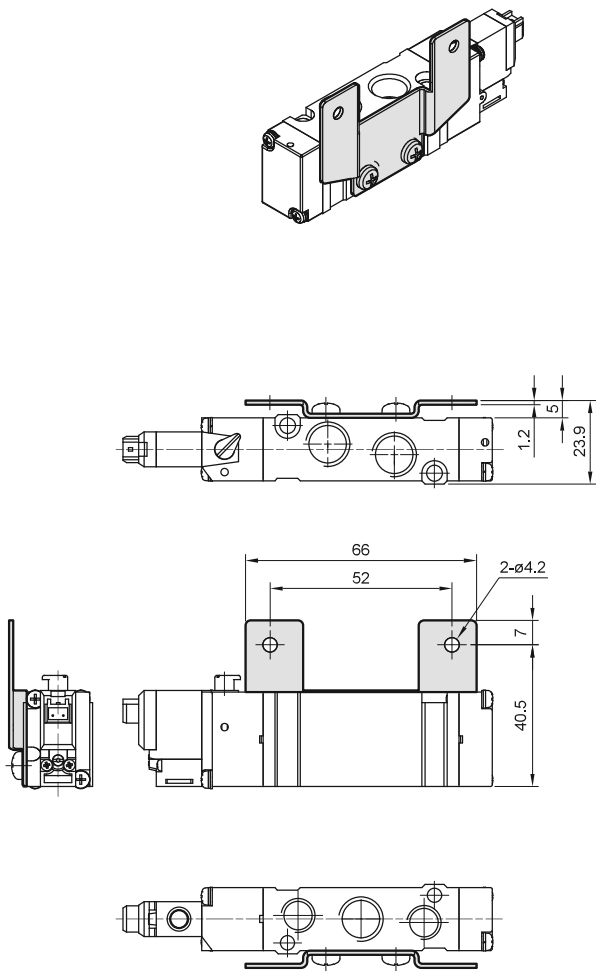
## Order example of bracket



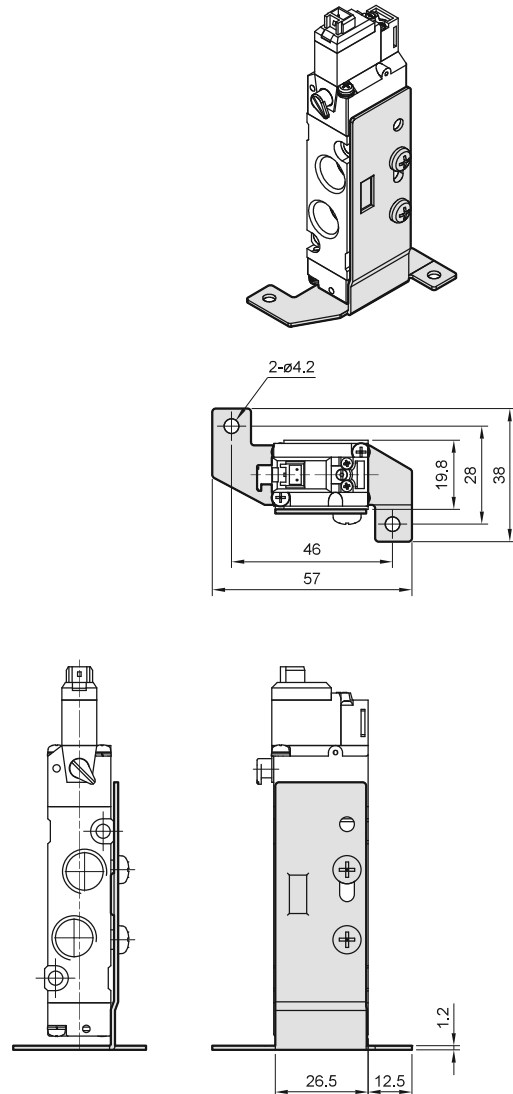
## Order example of spacer assembly



### PTV-188-1A



### PTV-188-2A

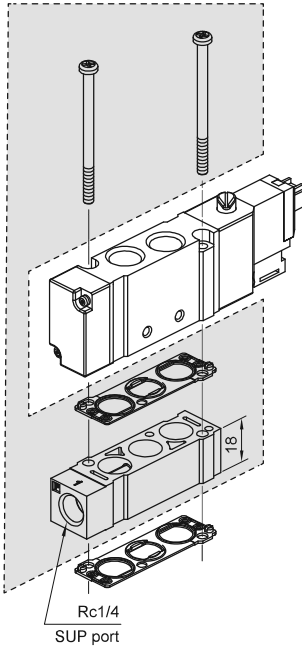


# Spacer assembly

## ■ for body ported type

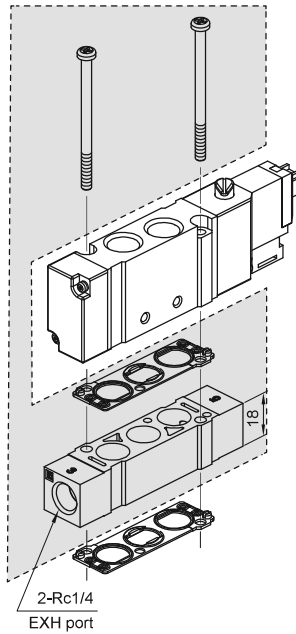
### PTV-188-5BP

Individual SUP spacer assembly



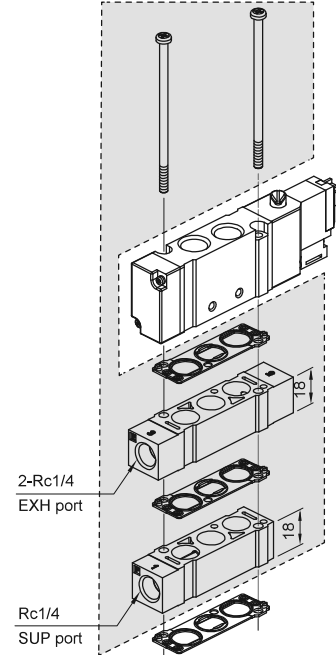
### PTV-188-5BR

Individual EXH spacer assembly



### PTV-188-5BPR

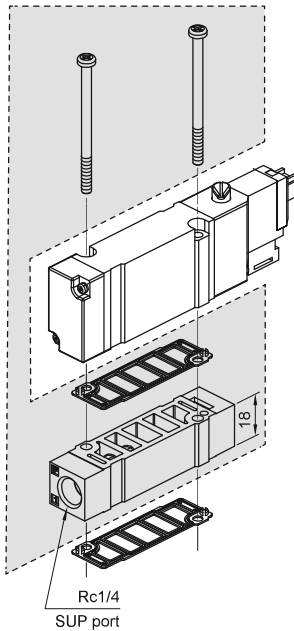
Individual SUP spacer assembly+  
Individual EXH spacer assembly



## ■ for manifold type

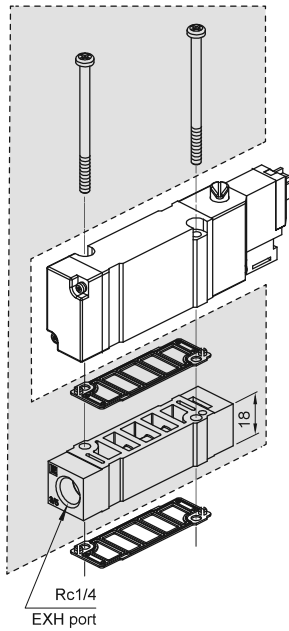
### PTV-188 M-5MP

Individual SUP spacer assembly



### PTV-188M-5MR

Individual EXH spacer assembly



### PTV-188M-5MPR

Individual SUP spacer assembly+  
Individual EXH spacer assembly

