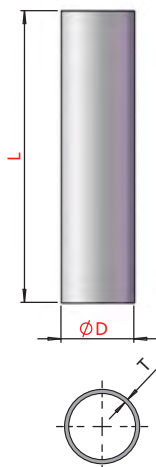


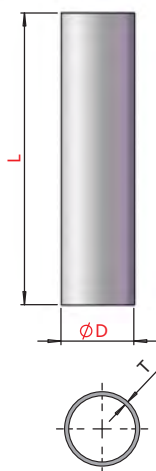
Sus Tube



Tube plugs

PN	Model	D(mm)	L(mm)	T(mm)	Weight	Plugs
4.Y00040	PST8-1500	Ø8	1500	0.6	215g	1.Y03375(red)
4.Y00021	PST12-1500	Ø12	1500	0.6	339g	1.Y03636(grey) 1.Y03638(blue) 1.Y03640(black)
4.Y00022	PST20-1500	Ø20	1500	0.8	560g	1.Y03637(grey) 1.Y03639(blue) 1.Y03641(black)

Aluminium Tube



PN	Model	D(mm)	L(mm)	T(mm)	Weight
4.Y00468	PAT20-1000	Ø20	1000	2	308g
4.Y00469	PAT30-1000	Ø30	1000	2.5	558g

Profile · SUS Tube

Stents Module

Quick Changer

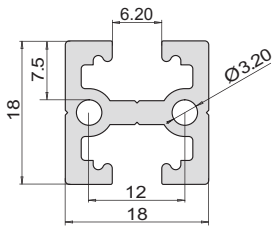
Grip Module

Air Nipper

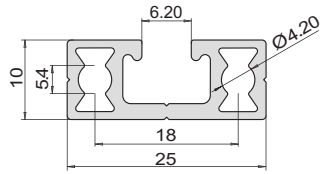
Vacuum Module

Accessory Components

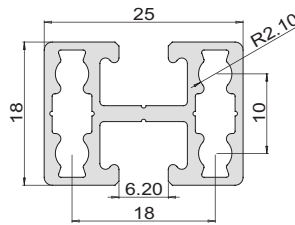
Extruded Profiles



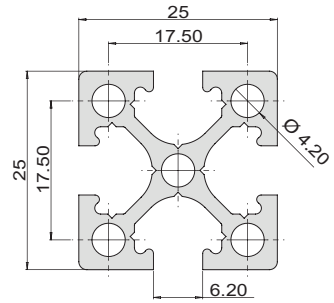
PEP1818



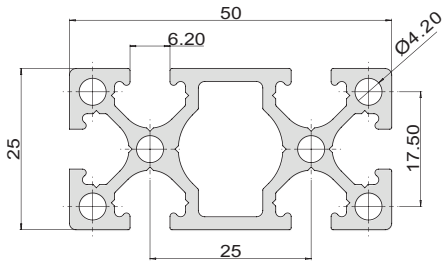
PEP2510



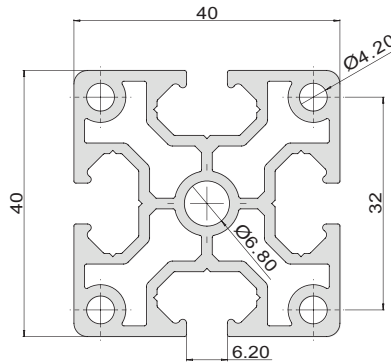
PEP2518



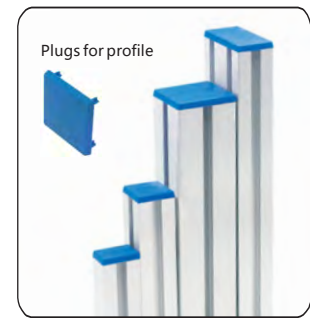
PEP2525



PEP5025

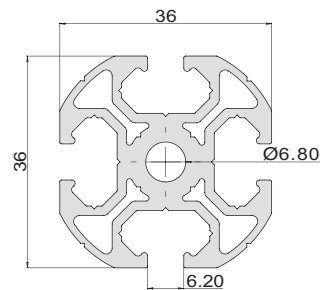


PEP4040



PN	Model	Length	Weight	Plugs PN	Plugs Model
4.Y00075	PEP1818-1000	1.0m	425g	4.Y00517	P1818
4.Y00076	PEP2510-1000	1.0m	310g	4.Y00518	P2510
4.Y00455	PEP2518-1000	1.0m	400g	4.Y00069	P2518
4.Y00050	PEP2525-1000	1.0m	610g	4.Y00070	P2525
* 4.Y00051	PEP2525-2000	2.0m	1220g		
4.Y00056	PEP5025-1000	1.0m	1040g	4.Y00071	P5025
* 4.Y00057	PEP5025-2000	2.0m	2080g		
4.Y00052	PEP4040-1000	1.0m	1300g	4.Y00072	P4040
* 4.Y00053	PEP4040-2000	2.0m	2600g		

* Optional



PEP-3636

PN	Model	Length	Weight	Plugs PN	Plugs Model
4.Y00054	PEP3636-1000	1.0m	1168g		
4.Y00484	PEP3636-1500	1.5m	1752g	4.Y00073	P3636
* 4.Y00055	PEP3636-2000	2.0m	2336g		

* Optional

Profile · SUS Tube

Stents Module

Quick Changer

Grip Module

Air Nipper

Vacuum Module

Accessory Components

T-Nuts

Profile - SUS Tube

Stents Module

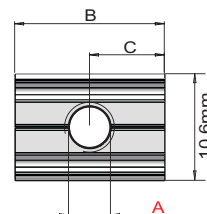
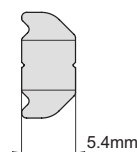
Quick Changer

Grip Module

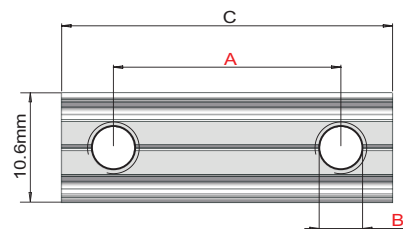
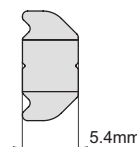
Air Nipper

Vacuum Module

Accessory Components



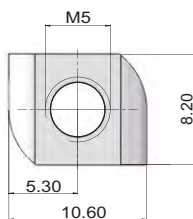
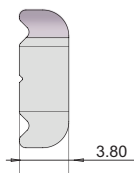
PN	Model	A(mm)	B(mm)	C(mm)	Weight
7.Y00651	PTN-M4	M4	15	7.5	5g
7.Y00425	PTN-M5	M5	15	7.5	5g
7.Y00652	PTN-M6	M6	15	7.5	5g



PN	Model	A(mm)	B(mm)	C(mm)	Weight
7.Y00653	PTN-M4P8	8	M4	16	5g
7.Y00654	PTN-M5P10	10	M5	20	7g
7.Y00655	PTN-M5P15	15	M5	25	9g
7.Y00656	PTN-M5P17	17	M5	25	9g
7.Y00657	PTN-M5P22	22	M5	32	11g
7.Y00658	PTN-M5P25	25	M5	35	13g
7.Y00659	PTN-M5P28	28	M5	38	14g
7.Y00660	PTN-M5P30	30	M5	40	15g
7.Y00661	PTN-M5P35	35	M5	45	16g
7.Y00662	PTN-M5P40	40	M5	50	18g
7.Y00663	PTN-M5P50	50	M5	60	22g
7.Y00664	PTN-M5P60	60	M5	70	26g
7.Y00665	PTN-M5P90	90	M5	100	38g

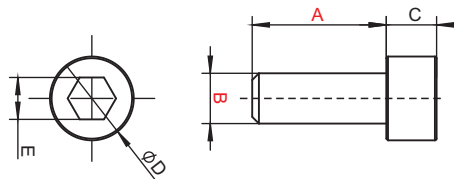
Last-Minute Nut

To be used when you need to add something to an already assembled EOAT.



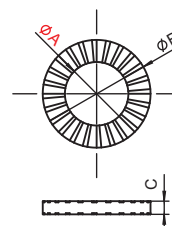
PN	Model	Weight
7.Y00805	PTN-M5R	2g

Sus Screws



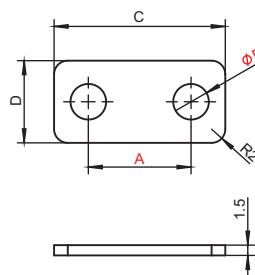
PN	Model	A(mm)	B(mm)	C(mm)	D(mm)	E(mm)	Weight
1.Y03908	PTC-M4L10	10					1.6g
1.Y03848	PTC-M4L12	12					1.8g
1.Y02752	PTC-M4L14	14	M4	4	6.8	3.2	1.9g
1.Y04073	PTC-M4L16	16					2.0g
1.Y05846	PTC-M4L18	18					2.1g
1.Y04294	PTC-M5L10	10					2.9g
1.Y03850	PTC-M5L12	12					3.1g
1.Y04528	PTC-M5L14	14					3.3g
1.Y03849	PTC-M5L16	16					3.6g
1.Y03909	PTC-M5L20	20					4.0g
1.Y06257	PTC-M5L22	22	M5	5	8.3	4.1	4.3g
1.Y03851	PTC-M5L25	25					4.7g
1.Y04469	PTC-M5L30	30					5.3g
1.Y04580	PTC-M5L35	35					5.9g
1.Y05391	PTC-M5L60	60					10.0g
1.Y04288	PTC-M6L10	10					4.0g
1.Y03910	PTC-M6L12	12					4.6g
1.Y04153	PTC-M6L14	14	M6	6	10	5.3	5.2g
1.Y02753	PTC-M6L16	16					5.5g

Single Hole Shim



PN	Model	A(mm)	B(mm)	C(mm)
1.Y03853	PTS-M4	4.5	7	0.45
1.Y03852	PTS-M5	5.5	9	0.55
1.Y03854	PTS-M6	6.5	10	0.65

Double Holes Shim



PN	Model	A(mm)	B(mm)	C(mm)	D(mm)
4.Y00522	PTD-M4P8	8	4.5	16	12
4.Y00523	PTD-M5P10	10	5.5	20	12
4.Y00524	PTD-M5P15	15	5.5	25	12
4.Y00525	PTD-M5P17	17	5.5	25	12
4.Y00526	PTD-M5P22	22	5.5	32	12
4.Y00527	PTD-M5P25	25	5.5	35	12

Profile - SUS Tube

Stents Module

Quick Changer

Grip Module

Air Nipper

Vacuum Module

Accessory Components