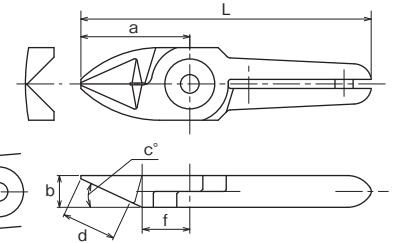


### No. AS/HS Standard



**AS/Standard type.** Basic set of blades used for cutting copper wire and steel wire.  
**HS/Improved durability** with brazed high-speed steel.



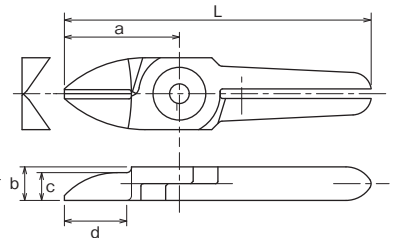
Model No.	Size (mm)							Weight (g)	Material	Applicable models	EDP No.
	a	b	c (°)	d: Effective Length	e: Blade opening	f	L				
N3AS	24	7	25	12	4	10.5	64	35	Special alloy steel	GT-NS3 / N3 / NR3	360102
N3HS	24	7	25	12	4	10.5	64	35	w/High speed steel chip	GT-NS3 / N3 / NR3	360101
N5AS	24	7	25	12	4	10.5	64	40	Special alloy steel	GT-NS5 / N5 / NR5	360112
N5HS	24	7	25	12	4	10.5	64	40	w/High speed steel chip	GT-NS5 / N5 / NR5	360111
N7AS	27	9	30	13.5	4	12.5	81	80	Special alloy steel	GT-NS7 / N7 / NR7	360122
N7HS	27	9	30	13.5	4	12.5	81	80	w/High speed steel chip	GT-NS7 / N7 / NR7	360121
N10AS	27	9	30	13.5	5	12.5	91	85	Special alloy steel	GT-N10	360132
N10HS	27	9	30	13.5	5	12.5	91	85	w/High speed steel chip	GT-N10	360131
N10LAS	35	12	30	20	5	15	89	120	Special alloy steel	GT-NS10L / NR10L	360181
N12AS	35	12	30	20	5	15	105	135	Special alloy steel	GT-N12	360142
N12HS	35	12	30	20	5	15	105	135	w/High speed steel chip	GT-N12	360141
N20AS	35	12	30	20	9	15	95	140	Special alloy steel	GT-NS20 / N20 / NR20 / NB20	360151
N30AS	43	17	30	25	9	18	127	370	Special alloy steel	GT-NS30 / N30 / NR30 / NB30	360161

>> For guidance on cutting capability, see P30 of the technical material.

### No. BJ Straight blades for metals



**BJ/This is a set of vertical blades** with an unbeveled cutting edge for metal.



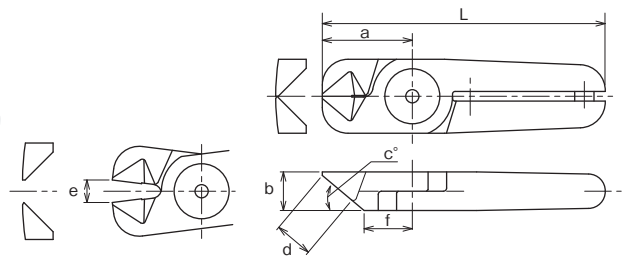
Model No.	Size (mm)							Weight (g)	Material	Applicable models	EDP No.
	a	b	c	d: Effective Length	e: Blade opening	L					
NW1BJ	20	5	3	10.5	3.5	50	16	Special alloy steel	GT-NWR1 / NWS1	360450	
N3BJ	24	7	5.8	13	5	64	35	Special alloy steel	GT-NS3 / N3 / NR3	360106	
N5BJ	24	7	5.8	13	4	64	40	Special alloy steel	GT-NS5 / N5 / NR5	360119	
N7BJ	27	9	7.5	13	5	81	75	Special alloy steel	GT-NS7 / N7 / NR7	360128	
NW10BJ	30	9	6	14	5	85	76	Special alloy steel	GT-NWR10 / NWS10	360453	
NW20BJ	40	12	6	21.5	8	100	142	Special alloy steel	GT-NWR20 / NWS20	360459	
NW30BJ	55	17	8	29.5	11	140	367	Special alloy steel	GT-NWR300 / NWS30	360460	

>> For guidance on cutting capability, see P30 of the technical material.

### No. AG Powerful cutting blades



**AG/This is a set of blades with increased strength** with a shorter cutting edge than the standard type. More welding pressure is created because it cuts at the base of the blades.



Model No.	Size (mm)							Weight (g)	Material	Applicable models	EDP No.
	a	b	c (°)	d: Effective Length	e: Blade opening	f	L				
N20AG	28	12	40	12	7	15	88	135	Special alloy steel	GT-NS20 / N20 / NR20 / NB20	360159
N20HS	26	12	40	10	7	13.5	86	135	w/High speed steel chip	GT-NS20 / N20 / NR20 / NB20	360157

>> For guidance on cutting capability, see P231 of the technical material.

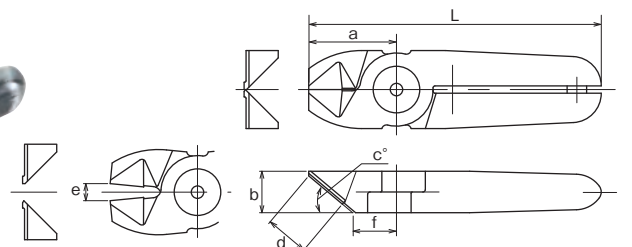
### No. BBB Powerful cutting blades with carbide tips



**BBB/With carbide tips** suitable for cutting hard wires such as high steel wire and piano wire.



Recommended to the applications where more durable blade than the special alloy steel is required (i.e. when cutting piano wires)



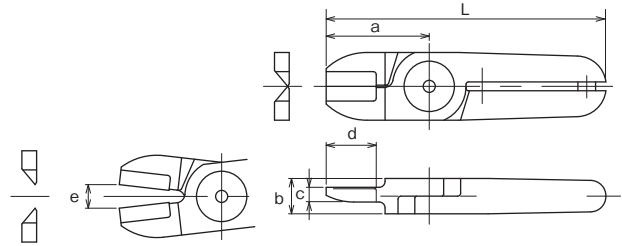
Model No.	Size (mm)							Weight (g)	Material	Applicable models	EDP No.
	a	b	c (°)	d: Effective Length	e: Blade opening	f	L				
N30BBB	36	17	40	18	7	18	120	365	w/Carbide chip	GT-NS30 / N30 / NR30 / NB30	360172
N50BBB	46	25	35	19	9	24	166	955	w/Carbide chip	GT-N50 / NR50	360177

>> For guidance on cutting capability, see P30 of the technical material.

Air nipper standard blades for metal

**No. BFB/AS** Clipper blades with carbide tips

**Metal** **BFB**/With carbide tips, suitable for cutting metal wire and thin pipe.  
**AS**/Standard clipper type blades.

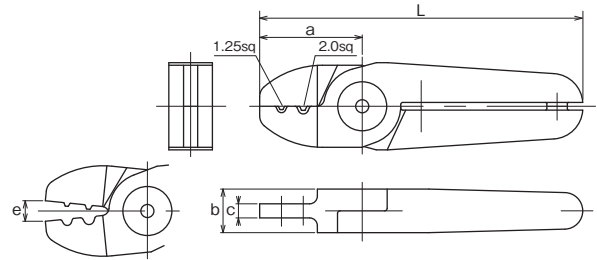


Model No.	Size (mm)						Weight (g)	Material	Applicable models	EDP No.
	a	b	c	d: Effective Length	e: Blade opening	L				
<b>N20BFB</b>	35	12	5	17	8	95	150	w/Carbide chip	GT-NS20 / N20 / NR20 / NB20	360156
<b>N50AS</b>	60	25	10	30	11	180	950	Special alloy steel	GT-N50 / NR50	360175

>> For guidance on cutting capability, see P30 of the technical material.

**No. ACD** Crimp edge for solderless terminals

**Metal** **ACD**/This is a set of blades for crimping solderless terminals.  
(Bare terminal 1.25sq/2.0sq)



Model No.	Size (mm)					Weight (g)	Material	Applicable models	EDP No.
	a	b	c	d: Blade opening	L				
<b>N30ACD</b>	40	17	5.5	8	126	335	Special alloy steel	GT-NS30 / N30 / NR30 / NB30	360171

>> For guidance on cutting capability, see P30 of the technical material.

Air nipper standard blades for plastic

**No. NM** NM Blades

**PAT.**

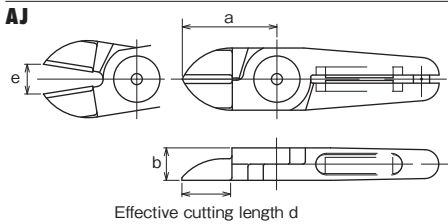


NM blades eliminate troubles caused by spring breakage. Can be mounted on the VESSEL current air nippers. Periodic replacement of spring is no more necessary as the magnet works semi-permanently.

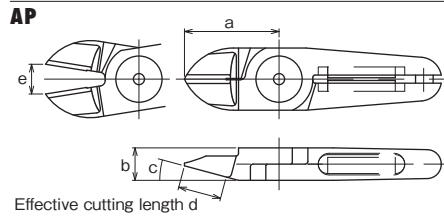


- Ideal for around-the-clock operations
- Semi-permanent magnetic force
- Compatible with our standard nipper bodies

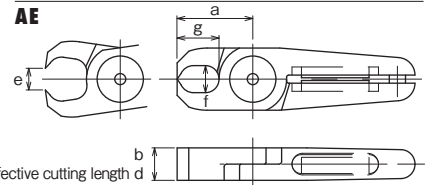
Thin, straight type / For plastic parts



For plastic parts



Nipping type / For plastic parts

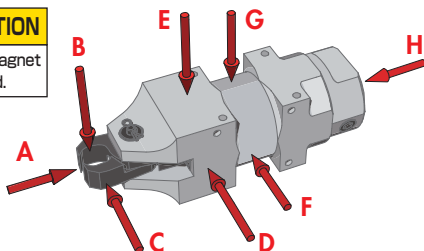


Model No.	Size (mm)							Weight (g)	Applicable models	EDP No.
	a	b	c (°)	d	e	f×g				
<b>NM20AJ</b>	35	12	-	18	11	-	116	GT-NS20 / N20 / NR20 / NB20	360246	
<b>NM20AP</b>	35	12	15	16	11	-	124	GT-NS20 / N20 / NR20 / NB20	360247	
<b>NM20AE</b>	28	12	-	12	8	10×15.5	129	GT-NS20 / N20 / NR20 / NB20	360248	
<b>NM30AJ</b>	52	17	-	28	11	-	360	GT-NS30 / N30 / NR30 / NB30	360261	
<b>NM30AP</b>	66	17	15	38	16	-	380	GT-NS30 / N30 / NR30 / NB30	360262	
<b>NM30AE</b>	45	17	-	17	12	13×28	358	GT-NS30 / N30 / NR30 / NB30	360263	

>> For guidance on cutting capability, see P30 of the technical material.

\*Customization also available upon request.

**CAUTION**  
Powerful magnet is used.



**Result of magnetic force measurement**

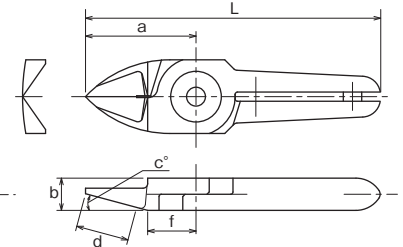
If a magnetic sensor for operation check is installed nearby, please confirm the magnetic force level in the following diagram.

品番 No.	A	B	C	D	E	F	G	H	EDP No.
<b>NM20AE</b>	85	10	10	5	32	5	2	0	360248
<b>NM30AE</b>	34	8	8	6	42	15	30	3	360263

Measurement unit: Gauss  
Measurement device: Gaussmeter GM-1200 manufactured by DENSHIJIKI INDUSTRY Co., Ltd.

### No. AP Standard blades for plastic

**Plastic** **AP**/Standard set of blades used to cut plastic. A large R is provided in the cross section for gate cutting in which the cut end must not be left. (The cutting edge is curved.)

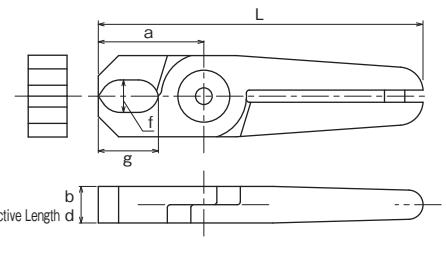


Model No.	Size (mm)							Weight (g)	Material	Applicable models	EDP No.
	a	b	c (°)	d: Effective Length	e: Blade opening	f	L				
<b>N3AP</b>	24	7	15	11.5	4	10.5	64	35	Special alloy steel	GT-NS3 / N3 / NR3	360104
<b>N5AP</b>	24	7	15	11.5	4	10.5	64	40	Special alloy steel	GT-NS5 / N5 / NR5	360114
<b>N7AP</b>	27	9	30	11.5	4	14.5	81	80	Special alloy steel	GT-NS7 / N7 / NR7	360124
<b>N10AP</b>	27	9	30	11.5	5	14.5	91	85	Special alloy steel	GT-N10	360134
<b>N10LAP</b>	35	12	15	16	5	15	89	120	Special alloy steel	GT-NS10L / NR10L	360182
<b>N12AP</b>	35	12	15	16	5	15	105	135	Special alloy steel	GT-N12	360144
<b>N20AP</b>	35	12	15	16	11	15	95	125	Special alloy steel	GT-NS20 / N20 / NR20 / NB20	360155
<b>N30AP</b>	66	17	15	38	16	24	150	380	Special alloy steel	GT-NS30 / N30 / NR30 / NB30	360165

>> For guidance on cutting capability, see P30 of the technical material.

### No. AE Nipping blades for plastic

**Plastic** **AE**/Used for plastic gates such as ride gates and discard gates.

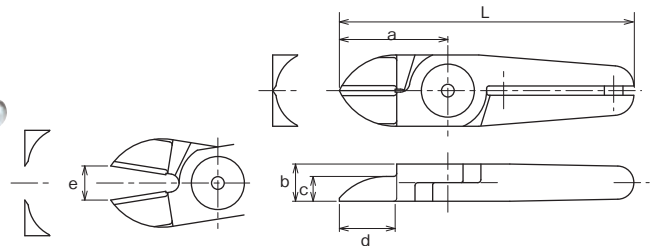


Model No.	Size (mm)							Weight (g)	Material	Applicable models	EDP No.
	a	b	f×g	d: Effective Length	e: Blade opening	L					
<b>N3AE</b>	20	7	6x11	7	3.5	60	35	Special alloy steel	GT-NS3 / N3 / NR3	360108	
<b>N5AE</b>	20	7	6x6.6	7	3.5	60	40	Special alloy steel	GT-NS5 / N5 / NR5	360118	
<b>N7AE</b>	26	9	8x14.8	9	4	80	85	Special alloy steel	GT-NS7 / N7 / NR7	360126	
<b>N20AE</b>	28	12	10x15.5	12	8	88	135	Special alloy steel	GT-NS20 / N20 / NR20 / NB20	360158	
<b>N30AE</b>	45	17	13x28	17	12	129	395	Special alloy steel	GT-NS30 / N30 / NR30 / NB30	360166	

>> For guidance on cutting capability, see P30 of the technical material.

### No. AJ Straight blades for plastic

**Plastic** **AJ**/Vertical blades with an unbeveled cutting edge for plastic. You can apply it at a right angle to the gate.

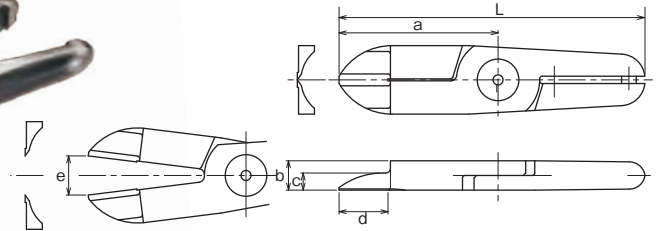


Model No.	Size (mm)							Weight (g)	Material	Applicable models	EDP No.
	a	b	c	d: Effective Length	e: Blade opening	L					
<b>NW10AJ</b>	30	9	6	14	5	85	76	Special alloy steel	GT-NWR10 / NWS10	360454	
<b>N20AJ</b>	35	12	8	18	11	95	125	Special alloy steel	GT-NS20 / N20 / NR20 / NB20	360152	
<b>N20AJB</b>	35	12	8	18	11	95	125	w/Carbide chip	GT-NS20 / N20 / NR20 / NB20	360381	
<b>NW20AJ</b>	40	12	6	21.5	8	100	142	Special alloy steel	GT-NWR20 / NWS20	360457	
<b>N30AJ</b>	52	17	8	28	11	136	370	Special alloy steel	GT-NS30 / N30 / NR30 / NB30	360169	
<b>NW30AJ</b>	55	17	8	29.5	11	140	368	Special alloy steel	GT-NWR30 / NWS30	360461	

>> For guidance on cutting capability, see P30 of the technical material.

**No. AJL** / Quasi-standard products **Straight long blades for plastic**

**Plastic** **AJL**/Long type straight blades. Suitable when there is distance between the nippers and the gate cut portion of the workpiece. N30AJL163 is useful for cutting wide gates.



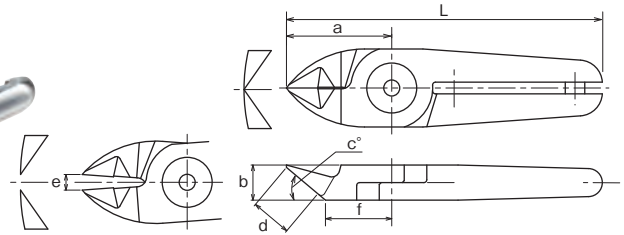
Model No.	Size (mm)							Weight (g)	Material	Applicable models	EDP No.
	a	b	c	d: Effective Length	e: Blade opening	L					
※N10LAJ141	61	12	7	34	10	115	165	Special alloy steel	GT-NS10L / NR10L	360369	
N20AJL	65	12	7	20	16	125	230	Special alloy steel	GT-NS20 / N20 / NR20 / NB20	360150	
※N20AB39	61	12	7	36	14	121	185	Special alloy steel	GT-NS20 / N20 / NR20 / NB20	360376	
※N30AJ163	65	17	7	41	17.5	149	355	Special alloy steel	GT-NS30 / N30 / NR30 / NB30	360389	
N30AJL	75	17	8	25	19	159	470	Special alloy steel	GT-NS30 / N30 / NR30 / NB30	360170	

>> For guidance on cutting capability, see P30 of the technical material.

Blade with a mark ※ is a quasi-standard.

**No. PF** **Flat blades for plastic**

**Plastic** **PF**/A set of blades for cutting plastic gates with cutting end flat. A large R is provided in the cross section for gate cutting in which the cut end must not be left.

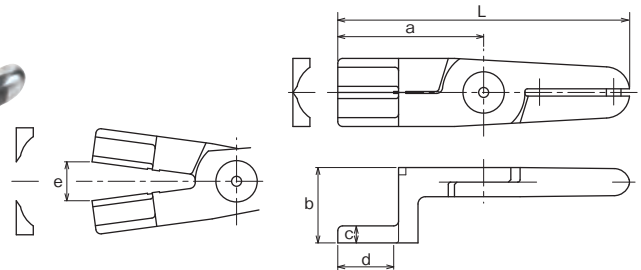


Model No.	Size (mm)							Weight (g)	Material	Applicable models	EDP No.
	a	b	c (°)	d: Effective Length	e: Blade opening	f	L				
N7PF	27	9	40	10.5	4	17	81	80	Special alloy steel	GT-NS7 / N7 / NR7	360127
N10LPF	35	12	40	13.5	5	21	89	120	Special alloy steel	GT-NS10L / NR10L	360183
N20PF	35	12	40	13.5	11	21	95	130	Special alloy steel	GT-NS20 / N20 / NR20 / NB20	360160
N30PF	58	17	30	25	15	33	142	390	Special alloy steel	GT-NS30 / N30 / NR30 / NB30	360167

>> For guidance on cutting capability, see P30 of the technical material.

**No.** / Quasi-standard products **Crank blades for plastic**

**Plastic** **AH**/Crank shaped blade for plastic. It is effective when there are obstructions or the gate is narrow.



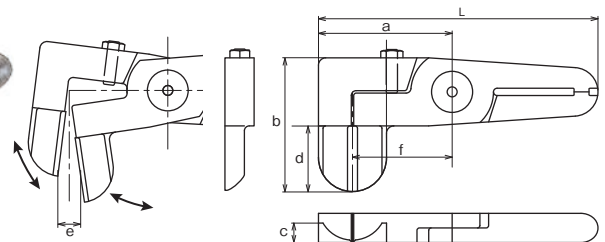
Model No.	Size (mm)							Weight (g)	Material	Applicable models	EDP No.
	a	b	c	d: Effective Length	e: Blade opening	L					
N20AH	60	31	7	23	16	120	240	Special alloy steel	GT-NS20 / N20 / NR20 / NB20	360149	

>> For guidance on cutting capability, see P30 of the technical material.

**No.** / Quasi-standard products **Laterally facing blades for plastics**

**Plastic** **AML/AMR** This is a set of blades for plastic where the cutting area is bent 90 degrees. It is useful when it is hard for the nipper to get into, for example, in cramped spaces.

AML AMR

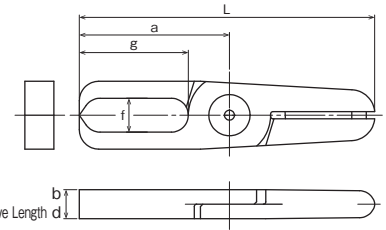
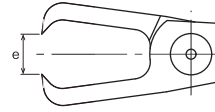


Model No.	Size (mm)							Weight (g)	Material	Applicable models	EDP No.
	a	b	c	d: Effective Length	e: Blade opening	f	L				
N20AML1498	55	55	8	26	9.5	41	115	270	Special alloy steel	GT-NS20 / N20 / NR20 / NB20	360384
N20AMR1499	55	55	8	26	9.5	41	115	270	Special alloy steel	GT-NS20 / N20 / NR20 / NB20	360385
<b>NEW</b> N30AML1435	55	68	10	35	13	39	139	520	Special alloy steel	GT-NS30 / N30 / NR30 / NB30	360370
<b>NEW</b> N30AMR1395	55	68	10	35	13	39	139	520	Special alloy steel	GT-NS30 / N30 / NR30 / NB30	360371

>> For guidance on cutting capability, see P30 of the technical material.

### No. Quasi-standard products Nipping blades for plastic

Plastic **AE/**Used for plastic gates such as ride gates and discard gates.

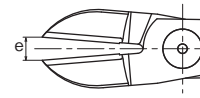


Model No.	Size (mm)						Weight (g)	Material	Applicable models	EDP No.
	a	b	f×g	d: Effective Length	e: Blade opening	L				
<b>NEW</b> N20AE1205	62	12	14x45	12	16.5	122	202	Special alloy steel	GT-NS20 / N20 / NR20 / NB20	360378

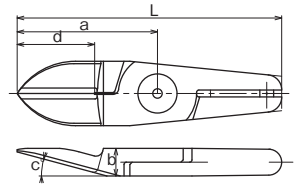
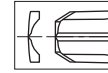
>> For guidance on cutting capability, see P30 of the technical material.

### No. Quasi-standard products R blades for plastic

Plastic A large R is provided in the cross section for gate processing where the cut end must not be left. An angled blades can be selected in accordance with the installation angle of the main unit.



N30AA114

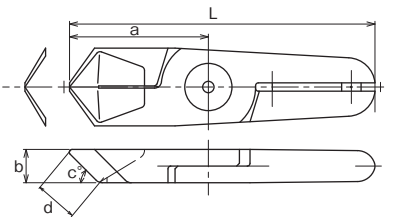
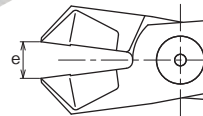


Model No.	Size (mm)						Weight (g)	Material	Applicable models	EDP No.
	a	b	c	d: Effective Length	e: Blade opening	L				
N10LAB152	61	12	15	35	10	115	165	Special alloy steel	GT-NS10 / NR10L	360367
N20AA27	45	12	23	25	12	105	145	Special alloy steel	GT-NS20 / N20 / NR20 / NB20	360373
N20AA239	52.3	12	40	27	14	112.3	195	Special alloy steel	GT-NS20 / N20 / NR20 / NB20	360372
N20AB360	61	12	15	35	16	121	185	Special alloy steel	GT-NS20 / N20 / NR20 / NB20	360375
N30AA114	76.3	17	30	50	20	160.3	385	Special alloy steel	GT-NS30 / N30 / NR30 / NB30	360386

>> For guidance on cutting capability, see P30 of the technical material.

### No. Quasi-standard products Angled nipping blades for plastic

Plastic **AE/** Used for processing plastic gates such as ride gates, discard gates. The cutting edge is angled so that the main unit can set up diagonally.



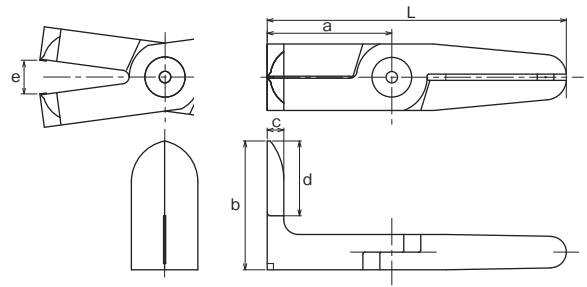
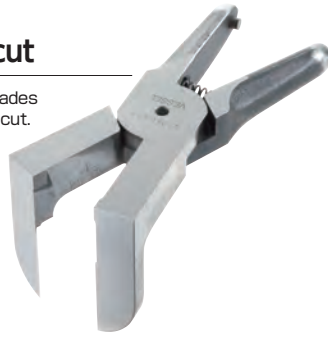
Model No.	Size (mm)						Weight (g)	Material	Applicable models	EDP No.
	a	b	c	d: Effective Length	e: Blade opening	L				
N20AE19	50	12	45	13	13	110	20	Special alloy steel	GT-NS20 / N20 / NR20 / NB20	360377
N30AE53	65	17	65	18.5	16	149	440	Special alloy steel	GT-NS30 / N30 / NR30 / NB30	360388

>> For guidance on cutting capability, see P30 of the technical material.



**No. Quasi-standard products** **L blades for sprue cut**

**Plastic** This is an angled long type straight set of blades with a 90-degree angle. Ideal for direct gate cut.

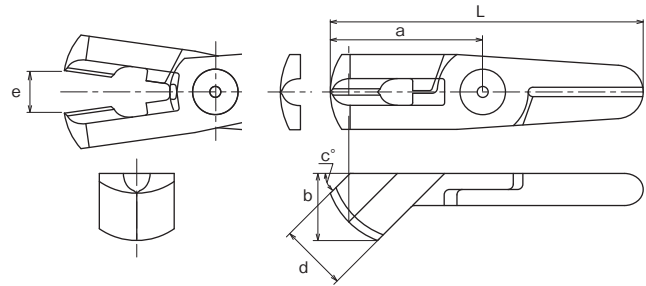
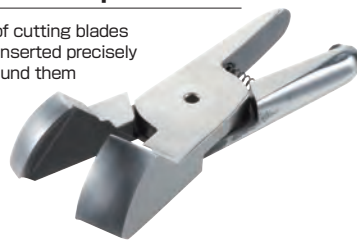


Model No.	Size (mm)						Weight (g)	Material	Applicable models	EDP No.
	a	b	c	d: Effective Length	e: Blade opening	L				
<b>N30AL525</b>	60	62	8	36	16	144	520	Special alloy steel	GT-NS30 / N30 / NR30 / NB30	360390

>> For guidance on cutting capability, see P30 of the technical material.

**No. Quasi-standard products** **Nipping blades for sprue cut**

**Plastic** This is the perfect spherical set of cutting blades for sprue cut. The blades can be inserted precisely in narrow areas that have ribs around them and the finish is very clean.



Model No.	Size (mm)						Weight (g)	Material	Applicable models	EDP No.
	a	b	c	d: Effective Length	e: Blade opening	L				
<b>N20AK249</b>	57	25	45	25	14	117	240	Special alloy steel	GT-NS20 / N20 / NR20 / NB20	360383

>> For guidance on cutting capability, see P30 of the technical material.

**List of Blade Springs**

EDP No.	Size (mm) Wire Dia. x O/D x Free Length	Material	Applicable	
			Standard Models	Custom-made or Other Models
<b>859100</b>	$\phi 0.45 \times \phi 3.7 \times 13$	SWP-B	N3.5	
<b>859101</b>	$\phi 0.7 \times \phi 5.1 \times 16.6$	SWP-B	N7.10	
<b>859102</b>	$\phi 0.7 \times \phi 5.6 \times 22.5$	SWP-B	N10L..12.20	F55U23H
<b>859103</b>	$\phi 1.0 \times \phi 8.0 \times 24$	SWP-B	N30AS.AG.BBB.ACD	H120SK.SKE
<b>859104</b>	$\phi 1.0 \times \phi 8.0 \times 28$	SWP-B	N30	
<b>859105</b>	$\phi 1.2 \times \phi 11.2 \times 37$	SWP-B	N50	H30ME.MEL.SK
<b>859106</b>	$\phi 0.8 \times \phi 7.8 \times 25$	SWP-B		H12ME30K

**Air Nipper Troubleshooting**

Inspection items when a malfunction occurs during use

Symptoms	Causes	Treatment
<b>1. Blades or slide not working properly.</b>	Air is not being supplied	Supply air
	The hose is twisted	Extend the hose
	Low air pressure	Air pressure adjustment
	Corrosion, wear, or contamination of sliding part of the blades	Lubrication/disassembly adjustment
	Sliding parts burned by heat (heat nipper)	Component replacement
	Broken blade spring	Component replacement
	Broken return spring	Component replacement
	Broken blades	Replace blades
<b>2. Air leakage</b>	Wear of the cutting unit/rivet	Replace blades
	Valve malfunction/wear, damage (O-rings, ball valves, etc.)	Component replacement
	Packing is broken	Component replacement