

VESSEL

Think Solutions!

For Metal

AIR NIPPER



www.vessel.co.jp/product/airnipper

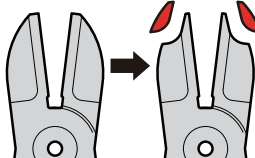
Solutions with Air Nippers

VESSEL has solved users' problems. Here are some examples of our solutions.

Problem #1

Cutting edges are bent due to lack of strength.

Workpiece: Copper wire
Blade that was used: Blade for metal (carbide tipped)

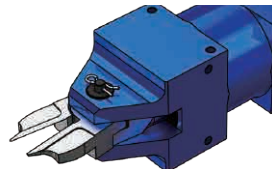


Causes: Since the blade tip had to be thin for insert into the equipment, the standard blade was grinded by the user to make it thinner. As a result, strength of the blade tip was reduced, which caused its bending and misalignment of the cutting edges.

Our Solutions

Custom-made thin tip blade

Nipper: GT-NWS20
Custom-made blade: NW20BJ[***]

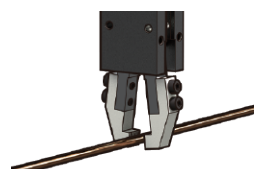


We have designed a blade to meet the customer's requirements by asking about specifications of the workpiece and restrictions around the equipment. Some standard blades can be additionally machined to be thinner, but in this case it is necessary to beware the blade tip strength.

Problem #2

Need to retain the copper wire after cutting.

Workpiece: Copper wire 2.8~4.5Φ
Blade that was used: Commercially available robotic hand air chuck

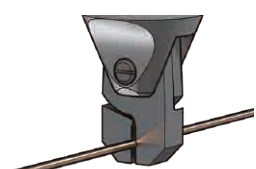


Causes: A non-slip chuck jaws will scratch the enameled coating of the copper wire when they grip it. With a straight chuck, the copper wire will be displaced and scratched.

Our Solutions

Custom-made wire retaining blade

Nipper: GT-NS20
Custom-made blade: N20DI[***]

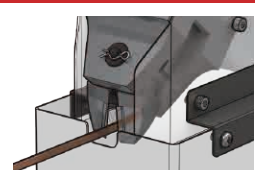


We designed a special retaining blade with an "hollow" that matches the wire diameter. Multiple shapes were designed according to various sizes of the wire. The place where the wire comes in contact is chamfered, and the retaining force is adjusted by a decompression valve so as not to crush the wire.

Problem #3

When cutting brass material, there is a cutting residue.

Workpiece: Brass hoop material (4×0.6mm)
Blade that was used: Blade for metal

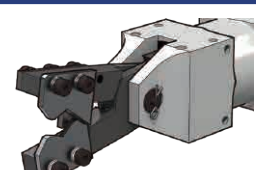


Causes: Used to use the carbide tipped blade and the NS30 nipper. The nipping blade sometimes did not cut fully the material, leaving some that was not cut, because it is soft and thin rather than because of the capability of the nipper itself.

Our Solutions

Custom-made scissor blade with carbide chip

Custom-made nipper: GT-NS20
Blade: N20VHAB[***]




Scissors-shaped blade is custom-made to meet the application so as to cut the material while the cutting edges slide perfectly, and to prevent the wire material from remaining between the cutting edges. The model selection for nippers was reviewed, which reduced the weight of the whole equipment.

Problem #4

Equipment does not have enough space to have a nipper in it.

Workpiece: Copper wire
Blade that was used: N3BJ




Causes: Since this is for application to cut thin wires, a small nipper is chosen, but actually it cannot be installed because even such a small type interrupts the equipment.

Our Solutions

Side opening blade

Nipper: GT-NS3
Blade: N3BMBL

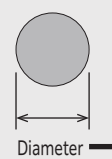


By using the side opening blade, the nipper can now be placed on the equipment without problems. If there is a space for the GT-NF05, the blade NY05RBJB can be used.

How to choose a nipper

(1) Material and size of the item to cut

Check the detail of the material such as copper wire, steel wire, pipe, band iron etc., and its outer diameter. As for rectangular item, calculate the nipper/blade model from its cross-section.



Reference	
Capacity φ (mm)	
Copper Wire	3.3
Steel Wire	2.8

(2) Nipper selection

Choose a nipper that is suitable for the required capacity that is estimated from the material and the diameter. Also, choose the nipper type (square, round, horizontal, or double-action) in consideration of equipment and the required function.

No. GT-N *	○	Capacity
NS : Square	3~30	Nipper
NR : Round	3~50	
NL : w/Lever	3~50	Capacity
NF : Horizontal	05~15	
NW % : Double-action	1~30	

(3) Blade selection

Choose a blade that matches the selected nipper. Confirm the blade shape and necessity of carbide, taking into consideration installation in equipment and the expected durability of the blade.

No. N *	○	●	Capacity	Shape
N : Square			Nipper	AS
NL : w/Lever				HS
NY : Horizontal			Capacity	BFB
NW : Double-action				BFB etc.

(4) Before order

We may cut your item for trial. This is recommended to confirm the cutting performance and the cut surface quality. Contact us or the nearest distributor.

(5) Custom-made blades

In case that our standard blades don't match your application, we may design a custom-made blade and quote from 1 piece. Contact us or the nearest distributor.

ADV Series

Pressurized force is increased by 20%. Recommended to make equipment lighter and smaller.
 Compared to the existing model, the 20 type is about 20% more powerful. This has been realized by review of the internal structure and by the new design of the piston and the inside diameter.

Dimensions are same as the existing model.
 It is easy to replace the existing model with this new product. **Corresponding to the trend of hardening of the resin products and the larger diameter of the gate, without changing the current jig.**

The blade that you have for the existing model can be used.
 The standard blades can be used as the replacement blade, as long as the nipper has the same capacity.

Note: Since the internal structure of this new nipper is different from the existing model, parts are not interchangeable between them. Also, some custom-made blades may not perform as sufficiently as intended.

Booster unit also available.
 Dedicated option for the demand of more powerful cutting force. By attaching the booster to the ADV series, the pressurized force is even further increased by about 20%.

Scale is a convenient reference when using with a stand.
 The NR series has the scale that is convenient when using with a stand.

Recommended to the following cases:
 ▶ You want to make the nipper **as light as possible** without using a pressure booster unit.
 ▶ The cutting capacity of the current model (NR20, NS20, NR30, NS30) is **a little insufficient**.
 ▶ The upper capacity nipper type would be appropriate, but could not be used **due to space limitations**.
 ▶ The cutting capacity is sufficient, but **the air pressure needs to be lowered**.
 ▶ Applications that **require pressurization**, such as crimping, punching, bending, etc.

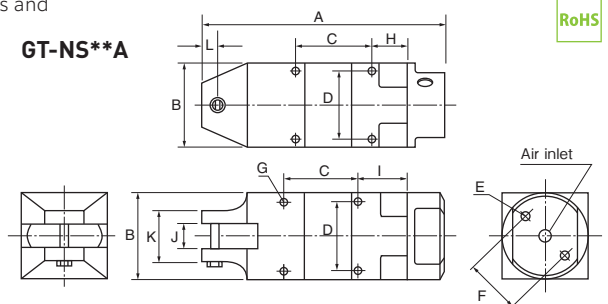
Air Nipper Square Type ADV *New*

GT-NS20A/30A

- The nipper that has about 20% more pressurized force than the existing NS20 series and 50% more than the NS30.
- The air inlet position can be adjusted 180 degrees, so it can be changed freely according to the mounting position of the main unit.
- Blades are OPTION.



※The photo represents GT-NS30A.



RoHS

Reference

	Capacity ϕ (mm)		Code No.	Model No.	Size (mm)											Air Consumption (cm ³ /str)	Air Pressure (MPa)	Weight (g)	Hose coupling	JAN (4907587)	
	Copper Wire	Steel Wire			A	B	C	D	E	F	G	H	I	J	K						L
New	3.0	2.4	360029	GT-NS20A	129	45	40	36	M5 Depth12	30	M4 Depth7	19	24	12	26	9	262	0.4~0.6	366	Rc1/8	035165
New	4.5	3.0	360030	GT-NS30A	170	56	60	46	M6 Depth12	40	M5 Depth8	20	30	17	36	15	648	0.5~0.6	686	Rc1/8	035172

※The capacity is for reference only, when mounting a standard blade. Subject to the blade type and the material of the product to cut.

※Make sure in advance of the product dimensions for installation to dedicated or automated machine. (Frame outer dimension, screw size, distance between screws, etc.)

※Working air hose inner dia.: 5mm ※Overall length and Weight: Accessories not included.

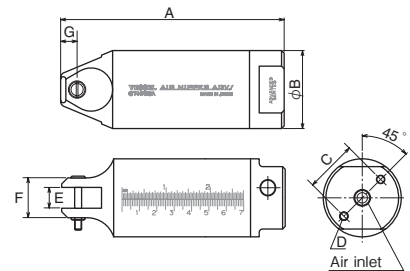
Air Nipper Round Type without Lever, ADV *New*

GT-NR20A/30A

- The nipper that has about 20% more pressurized force than the existing NR20 series and 50% more than the NR30.
- The air inlet position can be adjusted 180 degrees, so it can be changed freely according to the mounting position of the main unit.
- Scale is on the lateral side.
- Blades are OPTION.



※The photo represents GT-NR30A.



RoHS

Reference

	Capacity ϕ (mm)		Code No.	Model No.	Size (mm)							Air Consumption (cm ³ /str)	Air Pressure (MPa)	Weight (g)	Hose coupling	JAN (4907587)
	Copper Wire	Steel Wire			A	B	C	D	E	F	G					
New	3.0	2.4	360027	GT-NR20A	129	45	30	M5 Depth12	12	23	9.5	262	0.4~0.6	269.5	Rc1/8	034700
New	4.5	3.0	360028	GT-NR30A	170	56	30	M6 Depth12	117	30	10.5	648	0.5~0.6	496.0	Rc1/8	035158

※The capacity is for reference only, when mounting a standard blade. Subject to the blade type and the material of the product to cut.

※Make sure in advance of the product dimensions for installation to dedicated or automated machine. (Frame outer dimension, screw size, distance between screws, etc.)

※Working air hose inner dia.: 5mm ※Overall length and Weight: Accessories not included. ※Use an optional stand (NR20ST, NR30ST) for installation in equipment.

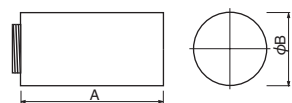
Booster Unit ADV *New*

P-20A/30A

- Booster unit dedicated to the ADV series.
- The booster unit that has about 20% more pressurized force than the existing P series.
- For the application that the originally expected pressurized force cannot be obtained because of the limit of the space and the air pressure.



※The photo represents P-30A.



RoHS

Reference

	Capacity ϕ (mm)		Code No.	Model No.	Size (mm)		Air Consumption (cm ³ /str)	Air Pressure (MPa)	Weight (g)	Applicable Nippers (GT-)	JAN (4907587)
	Copper Wire	Steel Wire			A	B					
New	3.4	2.6	360055	P-20A	87	45	538	~0.5	164	NS20A/NR20A	034717
New	5.5	4.5	360056	P-30A	92	56	744	~0.5	266	NS30A/NR30A	035189

※The capacity is for reference only, when mounting a standard blade. Subject to the blade type and the material of the product to cut. The total length and the weight will be the sum of the one of the nipper and the booster unit that is attached.

※Dedicated to the ADV series. Cannot be attached to the existing model (GT-NS/NR).

Square Air Nipper

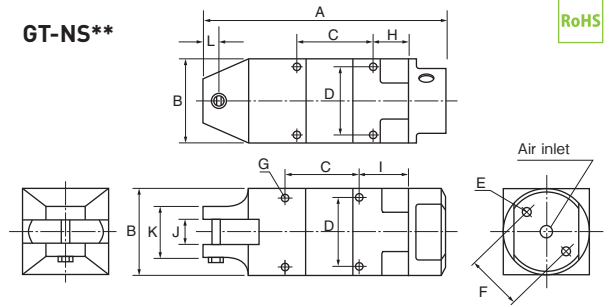
GT-NS3/5/7/10L/20/30

- For gate cutting of resin molded products, automatic welding machines, wire coiling machines, and various other types of wire cutting.
- The position of air intake port is 180-degree rotatable.
- A wide variety of blades are available.
- Blades are OPTION.



※The photo represents GT-NS20.

GT-NS**



RoHS

Reference

Capacityφ (mm)		Code No.	Model No.	Size(mm)											Air Consumption (cm ³ /str)	Air Pressure (MPa)	Weight (g)	Hose coupling	JAN (4907587)	
Copper Wire	Steel Wire			A	B	C	D	E	F	G	H	I	J	K						L
1.0	0.5	360012	GT-NS3	110	23	40	19	M3 Depth8	17	M3 Depth3.5	19	24	7	23	7	45	0.4~0.5	95	Rc1/8	308115
1.0	0.5	360013	GT-NS5	94	30	30	24	M4 Depth10	20	M3 Depth5	14	19	7	23	7	64	0.4~0.5	135	Rc1/8	308122
1.6	1.0	360014	GT-NS7	113	36	30	28	M4 Depth10	24	M4 Depth5.5	18	23	9	23	7	116	0.4~0.5	215	Rc1/8	308139
1.8	1.2	360009	GT-NS10L	113	36	30	28	M4 Depth10	24	M4 Depth5.5	18	23	12	26	7	116	0.5~0.6	215	Rc1/8	308146
2.6	2.0	360010	GT-NS20	129	45	40	36	M5 Depth12	30	M4 Depth7	19	24	12	26	9	230	0.5~0.6	370	Rc1/8	308153
3.3	2.8	360011	GT-NS30	170	56	60	46	M6 Depth12	40	M5 Depth8	20	30	17	36	15	584	0.5~0.6	685	Rc1/8	308160

※The capacity is for reference only when mounting a standard blade. Subject to the blade type and the material of the product to cut.
 ※Working air hose inner dia.: 5mm ※Overall length, weight: Accessories not included. ※GT-NS50 is a made-to-order model.

Air Nipper Round-Type without Lever

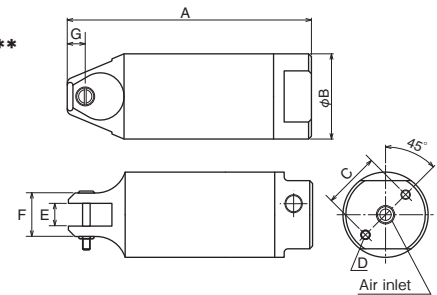
GT-NR3/5/7/10L/20/30/50

- The air inlet position can be adjusted 180 degrees, so it can be changed freely according to the mounting position of the main unit.
- The NR20 is with a scale on the body.
- Blades are OPTION



※The photo represents GT-NR20.

GT-NR**



RoHS

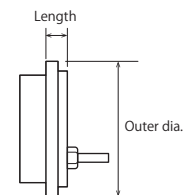
Reference

Capacityφ (mm)		Code No.	Model No.	Size(mm)						Air Consumption (cm ³ /str)	Air Pressure (MPa)	Weight (g)	Hose coupling	JAN (4907587)	
Copper Wire	Steel Wire			A	B	C	D	E	F						G
1.0	0.5	360015	GT-NR3	110	23	17	M3 Depth8	7	14	7	45	0.4~0.5	70	Rc1/8	308214
1.0	0.5	360016	GT-NR5	94	30	20	M4 Depth10	7	17	7	64	0.4~0.5	110	Rc1/8	308221
1.6	1.0	360017	GT-NR7	113	34	22	M4 Depth10	9	17	7	116	0.4~0.5	150	Rc1/8	308238
1.8	1.2	360018	GT-NR10L	113	36	24	M4 Depth10	12	20	7	116	0.5~0.6	215	Rc1/8	308245
2.6	2.0	360019	GT-NR20	129	45	30	M5 Depth12	12	23	9.5	230	0.5~0.6	280	Rc1/8	308252
3.3	2.8	360020	GT-NR30	165	56	40	M6 Depth12	17	30	10.5	584	0.5~0.6	505	Rc1/8	308269
5.5	4.5	360024	GT-NR50	222	75	50	M8 Depth12	25.2	43	15	1,170	0.5~0.6	1,190	Rc1/4	308276

※The capacity is for reference only when mounting a standard blade. Subject to the blade type and the material of the product to cut.
 ※Working air hose inner dia.: 5mm ※Overall length, weight: Accessories not included. ※GT-NS50 is a made-to-order model.
 ※Use a stand (option) for installation in equipment.

Blade Opening Adjustment End-Cap *New*

- Optional part for reducing the blade opening width.
- Can adjust with a screw at the rear of the end-cap.



RoHS

Code No.	Size (mm)		Hose Coupling	Applicable Nippers (GT-)	JAN (4907587)
	Length	Outer dia.			
New 855166	8	23	Rc1/8	NS3/NR3	-
New 855167	4	30	Rc1/8	NS5/NR5	-
New 855168	7	34	Rc1/8	NR7	-
New 855169	7	36	Rc1/8	NS7/NS10L/NR10L	-
New 855170	12	45	Rc1/8	NS20/NR20	-
New 855171	8	56	Rc1/8	NS30/NR30	-

Air Nipper with Safety Lever *New*

GT-NL3/5/7/10/12/20/30/50

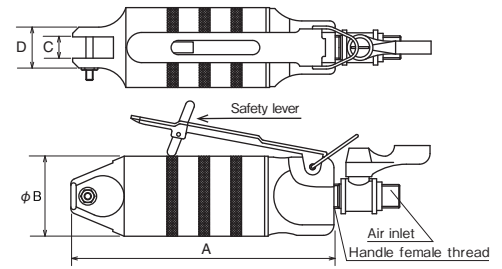
- Air nippers suitable for hand-held work.
- Equipped with a safety lever. Prevents accidental operation.
- A wide variety of blades are available.
- Blades are OPTION.

RoHS



※The photo represents GT-NL20.

GT-NL**



Reference

	Capacity ϕ (mm)		Code No.	Model No.	Size (mm)				Air Consumption (cm ³ /str)	Air Pressure (MPa)	Weight (g)	Handle Female Thread dia	Inlet Bush	Air Cock	Hose coupling	JAN (4907587)
	Copper Wire	Steel Wire			A	B	C	D								
New	1.0	0.5	360771	GT-NL3	112	23	7	14	45	0.4~0.5	115	Rc1/8	●	-	Rc1/4	035257
New	1.0	0.5	360772	GT-NL5	103	30	7	17	64	0.4~0.5	157	Rc1/8	●	-	Rc1/4	035264
New	1.6	1.0	360773	GT-NL7	123	34	9	17	116	0.4~0.5	201	Rc1/4	●	-	Rc1/4	035271
New	1.8	1.2	360774	GT-NL10	132	34	9	17	116	0.4~0.5	208	Rc1/4	●	-	Rc1/4	035288
New	2.3	1.7	360775	GT-NL12	143	36	12	20	116	0.5~0.6	242	Rc1/4	●	-	Rc1/4	035295
New	2.6	2.0	360776	GT-NL20	148	45	12	23	230	0.5~0.6	372	Rc1/4	-	●	Rc1/4	035301
New	3.3	2.8	360777	GT-NL30	185	56	17	30	584	0.5~0.6	627	Rc1/4	-	●	Rc1/4	035318
New	5.5	4.5	360778	GT-NL50	237	75	25.2	43	1,170	0.5~0.6	1,211	Rc1/4	-	●	Rc1/4	035325

※The capacity is for reference only when mounting a standard blade. Subject to the blade type and the material of the product to cut.
 ※Working air hose inner dia.: 5mm ※Overall length / Weight: Accessories not included.

Extra Pressure Booster

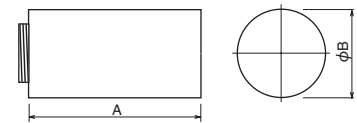
P-10L/20/30/50

- For the application that the originally expected pressurized force cannot be obtained because of the limit of the space and the air pressure.
- Can obtain about 20% more pressurized force than when not using this.

RoHS



※The photo represents P-20.



Reference

	Capacity ϕ (mm)		Code No.	Model No.	Size (mm)		Air Consumption (cm ³ /str)	Air Pressure (MPa)	Weight (g)	Applicable Nippers (GT-)	JAN (4907587)
	Copper Wire	Steel Wire			A	B					
	2.6	1.6	360051	P-10L	71	36	223	~0.5	115	NS10L/NR10L/NL10	308924
	3.0	2.2	360052	P-20	87	45	508	~0.5	215	NS20/NR20/NL20	308931
	4.8	4.0	360053	P-30	92	56	956	~0.5	330	NS30/NR30/NL30	308641
	6.5	5.5	360054	P-50	133	75	2,670	~0.5	840	NR50/NL50	014597

※The capacity is for reference only when mounting a standard blade. Subject to the blade type and the material of the product to cut.
 ※The overall length and the weight are for the pressure booster only. When attached, the total length will be the sum of the nipper body and the booster.

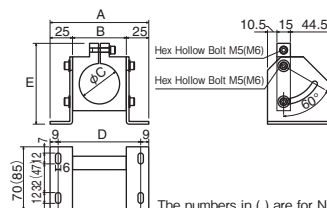
Stand for Round-Type without Lever | NR-ST

- Mounting angle can be adjusted (0 to 60°).

RoHS



※The photo represents NR20ST.



The numbers in () are for NR50ST.

Code No.	Model No.	Size (mm)					Weight (g)	Applicable Nippers (GT-)	JAN (4907587)
		A	B	C	D	E			
360057	NR10LST	102	52	36	84	82	335	NR10L	318008
360058	NR20ST	110	60	45	92	90	385	NR20/NR20A	318015
360059	NR30ST	130	80	56	112	110	535	NR30/NR30A	318022
852436	NR50ST	150	100	75	132	130	861	NR50	318039

Blade Spring

- Spring for making the blade open (Optional part)
- Regular replacement is recommended.

Code No.	Size (mm)		Applicable Nippers (GT-)
	Outer Dia. ϕ	Free Length	
859100	3.5	13	NS3~5/NR3~5/NL3~5
859101	5.1	18	NS7/NR7/NL7
859102	5.6	22.5	NS10L~20/NR10~20/NL10~20/NS20A/NR20A
859103	8	24	NS30/NR30/NL30/NS30A/NR30A (AS/BBB/AFB)
859104	8	28	NS30/NR30/NL30/NS30A/NR30A(AJB)
859105	11.2	37	NR50

Clipper Blade (Carbide tipped) *New* | AFB



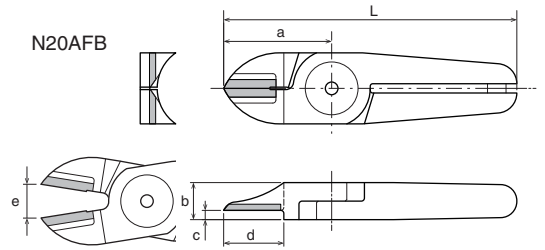
Metal

- Clipper blade for metal. The carbide tips are brazed on the cutting edges for further improved durability.

RoHS



※The photo represents N30AFB.



Reference

	Capacity ϕ (mm)		Code No.	Model No.	Size (mm)			Weight (g)	Material	Applicable Nippers (GT-)	JAN (4907587)			
	Copper Wire	Steel Wire			a	b	c					d Effective Length	e Blade Opening	L Overall Length
<i>New</i>	2.6	2.0	360153	N20AFB	35	12	3	15	11	95	115	Carbide tipped	NS20/NR20/NL20/NS20A/NR20A	035868
<i>New</i>	3.3	2.8	360163	N30AFB	43	17	4.5	19	11	125	322	Carbide tipped	NS30/NR30/NL30/NS30A/NR30A	035875

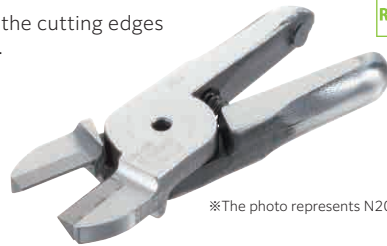
Clipper Blade (Carbide tipped) *New* | BFB



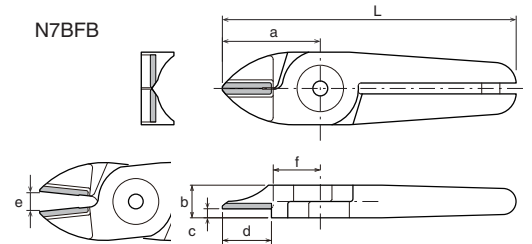
Metal

- Clipper blade for metal. The carbide tips are brazed on the cutting edges for further improved durability.

RoHS



※The photo represents N20BFB.



Reference

	Capacity ϕ (mm)		Code No.	Model No.	Size (mm)			Weight (g)	Material	Applicable Nippers (GT-)	JAN (4907587)			
	Copper Wire	Steel Wire			a	b	c (°)					d Effective Length	e Blade Opening	L Overall Length
<i>New</i>	1.0	0.5	360110	N3BFB	24	7	5.5	13	5	64	28	Carbide tipped	NS3/NR3/NL3	035844
<i>New</i>	1.6	1.0	360130	N7BFB	27	9	6.5	27	5.5	81	68	Carbide tipped	NS7/NR7/NL7	035851
	2.6	2.0	360156	N20BFB	35	12	5	17	8	180	150	Carbide tipped	NS20/NR20/NL20/NS20A/NR20A	372260

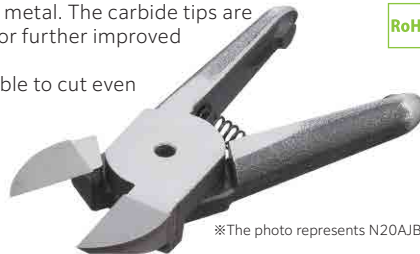
Straight Blade - Double Cutting Edge (Carbide tipped) *New* | AJB



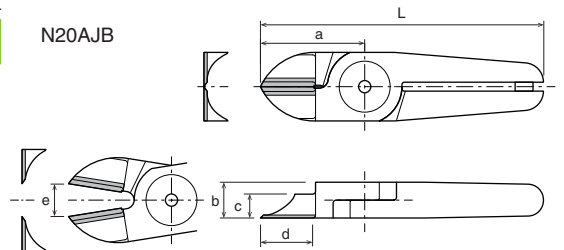
Metal

- Straight blade (flat blade) for metal. The carbide tips are brazed on the cutting edges for further improved durability.
- The double cutting edges enable to cut even more powerfully.

RoHS



※The photo represents N20AJB.



Reference

	Capacity ϕ (mm)		Code No.	Model No.	Size (mm)			Weight (g)	Material	Applicable Nippers (GT-)	JAN (4907587)			
	Copper Wire	Steel Wire			a	b	c					d Effective Length	e Blade Opening	L Overall Length
	2.6	2.0	360381	N20AJB	35	12	8	19	11	95	125	Carbide tipped	NS20/NR20/NL20/NS20A/NR20A	378712
<i>New</i>	3.3	2.8	360162	N30AJB	52	17	7.5	25	14	136	349	Carbide tipped	NS30/NR30/NL30/NS30A/NR30A	035837

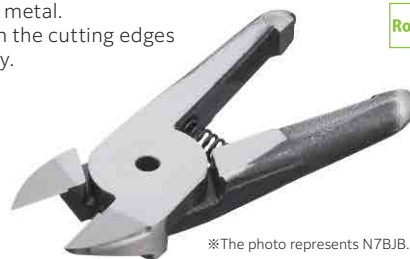
Straight Blade - Single Cutting Edge (Carbide tipped) *New* | BJB



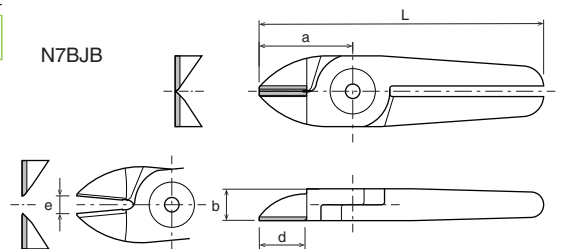
Metal

- Straight blade (flat blade) for metal. The carbide tips are brazed on the cutting edges for further improved durability.

RoHS



※The photo represents N7BJB.



Reference

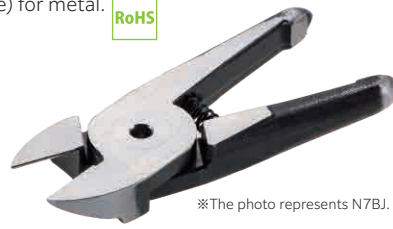
	Capacity ϕ (mm)		Code No.	Model No.	Size (mm)			Weight (g)	Material	Applicable Nippers (GT-)	JAN (4907587)			
	Copper Wire	Steel Wire			a	b	d Effective Length					e Blade Opening	L Overall Length	
<i>New</i>	1.0	0.5	360109	N3BJB	24	7	13	5	64	28	28	Carbide tipped	NS3/NR3/NL3	035813
<i>New</i>	1.6	1.0	360129	N7BJB	27	9	14	5.5	81	68	68	Carbide tipped	NS7/NR7/NL7	035820

Straight Blade - Single Cutting Edge | BJ



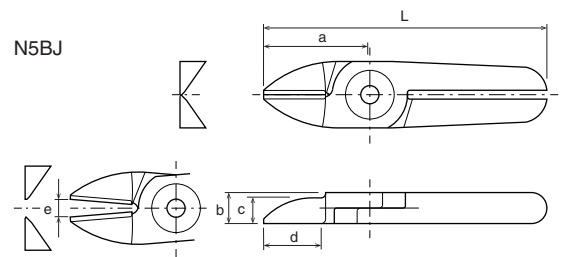
- Straight shape blade (flat shape) for metal.

RoHS



※The photo represents N7BJ.

N5BJ



Reference

Capacity ϕ (mm) Copper Wire Steel Wire	Code No.	Model No.	Size (mm)						Weight (g)	Material	Applicable Nippers (GT-)	JAN (4907587)
			a	b	c(°)	d Effective Length	e Blade Opening	L Overall Length				
1.0 0.5	360106	N3BJ	24	7	5.8	13	5	64	35	Special alloy steel	NS3/NR3/NL3	372048
1.0 0.5	360119	N5BJ	24	7	5.8	13	5	64	40	Special alloy steel	NS5/NR5/NL5	378552
1.6 1.0	360128	N7BJ	27	9	7.5	13	5	81	75	Special alloy steel	NS7/NR7/NL7	378569

Side Opening Blade - Single Cutting Edge (Carbide tipped) *New* | BMB



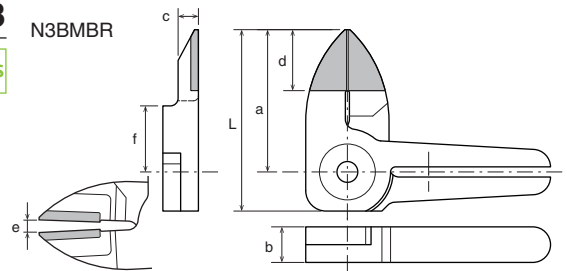
- Straight blade for metal with the cutting edge bent 90°.
- Effective for the narrow space where it is difficult to install an ordinary nipper.

RoHS



※The photo represents N3BMBR.

N3BMBR



Reference

Capacity ϕ (mm) Copper Wire Steel Wire	Code No.	Model No.	Size (mm)						Weight (g)	Material	Applicable Nippers (GT-)	JAN (4907587)	
			a	b	c(°)	d Effective Length	e Blade Opening	f					L Overall Length
New 1.0 0.5	360197	N3BMBl	28	7	4	12	5	13	35.5	31	Carbide tipped	NS3/NR3/NL3	035882
New 1.0 0.5	360198	N3BMBR	28	7	4	12	5	13	35.5	31	Carbide tipped	NS3/NR3/NL3	035899

Standard Blade - Single Cutting Edge | AS



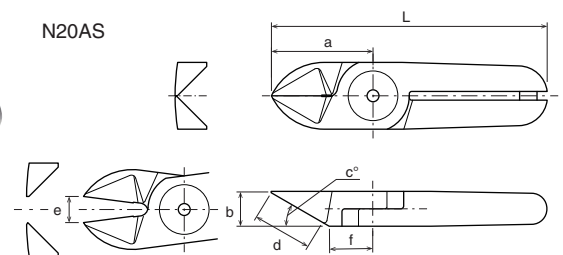
- Standard blade (rounded shape) suitable for cutting copper wires, steel wires, and so on.

RoHS



※The photo represents N20AS.

N20AS



Reference

Capacity ϕ (mm) Copper Wire Steel Wire	Code No.	Model No.	Size (mm)						Weight (g)	Material	Applicable Nippers (GT-)	JAN (4907587)	
			a	b	c(°)	d Effective Length	e Blade Opening	f					L Overall Length
1.0 0.5	360102	N3AS	24	7	25	12	4	10.5	64	35	Special alloy steel	NS3/NR3/NL3	372024
1.0 0.5	360112	N5AS	24	7	25	12	4	10.5	64	40	Special alloy steel	NS5/NR5/NL5	372079
1.6 1.0	360122	N7AS	27	9	30	13.5	4	12.5	81	80	Special alloy steel	NS7/NR7/NL7	372116
1.8 1.0	360132	N10AS	27	9	30	13.5	5	12.5	91	85	Special alloy steel	NL10	372161
1.8 1.2	360181	N10LAS	35	12	30	20	5	15	89	85	Special alloy steel	NS10L/NR10L	372413
2.3 1.7	360142	N12AS	35	12	30	20	5	15	105	135	Special alloy steel	NL12	372208
2.6 2.0	360151	N20AS	35	12	30	20	9	15	95	140	Special alloy steel	NS20/NR20/NL20/NS20A/NR20A	372239
3.3 2.8	360161	N30AS	43	17	30	25	9	18	127	370	Special alloy steel	NS30/NR30/NL30/NS30A/NR30A	372314

Standard Blade - Single Cutting Edge (HSS tipped) | HS



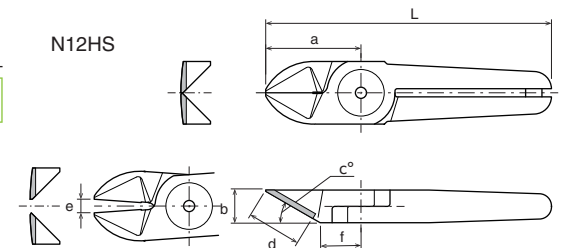
- Standard blade (rounded blade) for metal. The high speed steel tips are brazed on the cutting edges for improved durability.

RoHS



※The photo represents N12HS.

N12HS



Reference

Capacity ϕ (mm) Copper Wire Steel Wire	Code No.	Model No.	Size (mm)						Weight (g)	Material	Applicable Nippers (GT-)	JAN (4907587)	
			a	b	c(°)	d Effective Length	e Blade Opening	f					L Overall Length
1.0 0.5	360101	N3HS	24	7	25	12	4	10.5	64	35	HSS tipped	NS3/NR3/NL3	372017
1.0 0.5	360111	N5HS	24	7	25	12	4	10.5	64	40	HSS tipped	NS5/NR5/NL5	372062
1.6 1.0	360121	N7HS	27	9	30	13.5	4	12.5	81	80	HSS tipped	NS7/NR7/NL7	372109
1.8 1.2	360131	N10HS	27	9	30	13.5	5	12.5	91	85	HSS tipped	NL10	372154
2.3 1.7	360141	N12HS	35	12	30	20	5	15	105	135	HSS tipped	NL12	372192

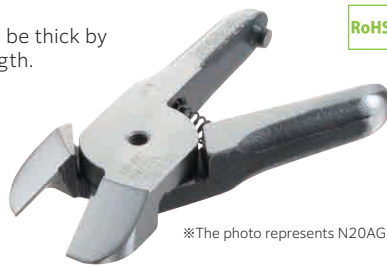
Powerful Cutting Blade - Single Cutting Edge | AG



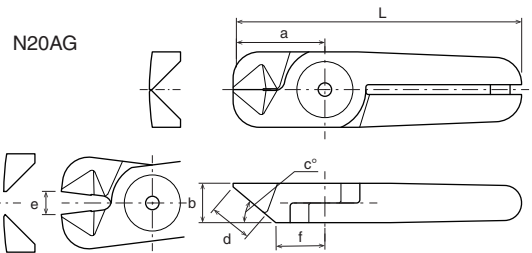
Metal

- Rounded blade for metal. The cutting edges are designed to be thick by shortening the blade effective length.

RoHS



※The photo represents N20AG.



Reference

Capacity ϕ (mm)	Copper Wire	Steel Wire	Code No.	Model No.	Size (mm)				Weight (g)	Material	Applicable Nippers (GT-)	JAN (4907587)			
					a	b	c(°)	d Effective Length					e Blade Opening	f	L Overall Length
2.6	2.0		360159	N20AG	28	12	40	12	7	15	88	135	Special alloy steel	NS20/NR20/NL20/NS20A/NR20A	372291

Powerful Cutting Blade - Single Cutting Edge (HSS tipped) | HS



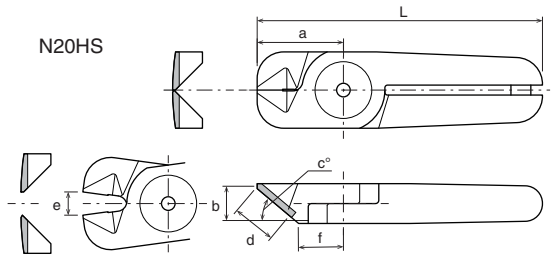
Metal

- Rounded blade for metal. The cutting edges are designed to be thick by shortening the blade effective length. In addition, the high speed steel tips are brazed for improved durability.

RoHS



※The photo represents N20HS.



Reference

Capacity ϕ (mm)	Copper Wire	Steel Wire	Code No.	Model No.	Size (mm)				Weight (g)	Material	Applicable Nippers (GT-)	JAN (4907587)			
					a	b	c(°)	d Effective Length					e Blade Opening	f	L Overall Length
2.6	2.0		360157	N20HS	26	12	40	10	7	13.5	86	135	HSS tipped	NS20/NR20/NL20/NS20A/NR20A	372277

Powerful Cutting Blade - Single Cutting Edge (Carbide tipped) | BBB



N30BBB

- Rounded blade for metal. The cutting edges are designed to be thick by shortening the blade length. In addition, the carbide tips are brazed for further improved durability.

RoHS



N50BBB

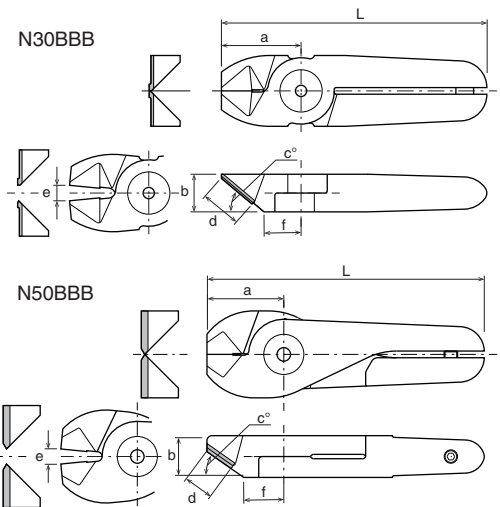
- N50BBB, the double cutting edge type, enables to cut even more powerfully.



※The photo represents N30BBB.



※The photo represents N50BBB.



Reference

Capacity ϕ (mm)	Copper Wire	Steel Wire	Code No.	Model No.	Size (mm)				Weight (g)	Material	Applicable Nippers (GT-)	JAN (4907587)			
					a	b	c(°)	d Effective Length					e Blade Opening	f	L Overall Length
3.3	2.8		360172	N30BBB	36	17	40	18	7	18	120	364	Carbide tipped	NS30/NR30/NS30A/NR30A/NL30	372383
5.5	4.5		360177	N50BBB	46	25	35	19	9	24	166	955	Carbide tipped	NS50/NR50	372406

Clipper Blade - Double Cutting Edge | AS



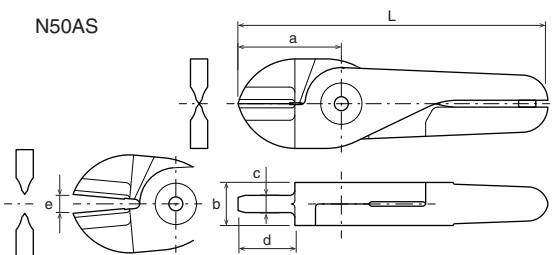
Metal

- Can cut powerfully with double cutting edges.

RoHS



※The photo represents N50AS.



Reference

Capacity ϕ (mm)	Copper Wire	Steel Wire	Code No.	Model No.	Size (mm)			Weight (g)	Material	Applicable Nippers (GT-)	JAN (4907587)			
					a	b	c(°)							
5.5	4.5		360175	N50AS	60	25	10	30	11	180	950	Special alloy steel	NR50	372390

Type-F Air Nipper

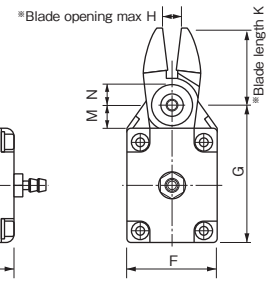
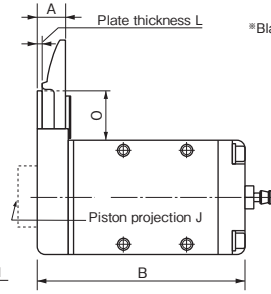
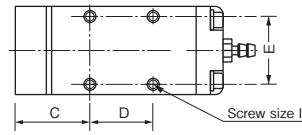
GT-NF05/10/15



- Compact, lightweight nippers suitable for mounting inside equipment.
- Blades are OPTION.

※The photo represents GT-NF05.

GT-NF10



RoHS

Reference

Capacity ϕ (mm) Copper Wire Steel Wire	Code No.	Model No.	Size (mm)															Air Consumption (cm ³ /str)	Air Pressure (MPa)	Weight (g)	Hose I/D (mm)	JAN (4907587)
			A	B	C	D	E	F	G	H	I	J	K	L	M	N	O					
1.6 / 1.0	360606	GT-NF05	8.6	59.9	21.9	17	18	23	39.5	4	M3	1.6	22	1.6	8.4	6.25	16.4	43	0.4~0.5	101	I/D ϕ 2.5 \times O/D ϕ 4	308511
1.7 / 1.1	360607	GT-NF10	8.8	65.1	23.1	20	22	28	43.5	6	M3.5	1.6	24	1.6	7.4	6.25	15.4	63	0.4~0.5	143	I/D ϕ 2.5 \times O/D ϕ 4	308528
1.8 / 1.2	360608	GT-NF15	10.2	73	25	25	26	33	48.5	8	M4	2	27	2	7.4	6.25	16.4	128	0.4~0.5	219	I/D ϕ 2.5 \times O/D ϕ 4	308535

※The capacity is for reference only when mounting a standard blade. Subject to the blade type and the material of the product to cut.
 ※Overall length · Weight: Accessories not included.

Blade Opening Adjustment Plate | WAS



- Optional part for reducing the opening width of the nipper blade.
- Can adjust the width with the screw on the right and left side.

Code No.	Model No.	Size (mm)			Weight (g)	Applicable Nippers (GT-)	JAN (4907587)
		A	B	C			
855162	NY05WAS	47.5	23.0	9.3	19	NF05	308511
855163	NY10WAS	51.5	28.0	9.5	22	NF10	308528
855164	NY15WAS	57.5	33.0	11.0	37	NF15	308535

Blade Spring

- Spring for making the blade open (Optional part)
- Regular replacement is recommended.

Code No.	Model No.	Size (mm)		Applicable Nippers (GT-)	JAN (4907587)
		Outer Dia. ϕ	Free Length		
859111	Blade Spring	3.8	11	NF05	-
859115	Blade Spring	3.6	16.5	NF10	-
859115	Blade Spring	3.6	16.5	NF15	-

Straight Blade - Single Cutting Edge (Carbide tipped) *New* | RBJB



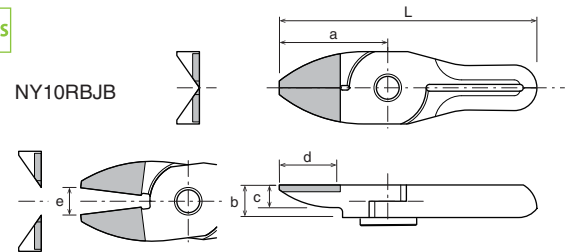
- Straight shape blade (flat shape) for metal. The carbide tips are brazed on the cutting edges for further improved durability.



※The photo represents NY25RBJB.

RoHS

NY10RBJB



Reference

Capacity ϕ (mm) Copper Wire Steel Wire	Code No.	Model No.	Size (mm)					Weight (g)	Material	Applicable Nippers (GT-)	JAN (4907587)	
			a	b	c(°)	d Effective Length	e Blade Opening					L Overall Length
New 1.0 / 0.5	360506	NY03RBJB	21	7	4.5	10.5	3	48	17	Carbide tipped	NY03GR	035660
New 1.6 / 1.0	360507	NY05RBJB	22	7	5	10.5	4	53	24	Carbide tipped	NF05	035677
New 1.7 / 1.1	360508	NY10RBJB	24	7.2	5	12	6	57	29	Carbide tipped	NF10	035684
New 1.8 / 1.2	360509	NY15RBJB	27	8.2	5.5	13	8	65	41	Carbide tipped	NF15	035691
New 2.2 / 1.6	360510	NY25RBJB	31	10	6	16	9	77	70	Carbide tipped	NY25R/25S	035707

Straight Blade - Single Cutting Edge | RBJ



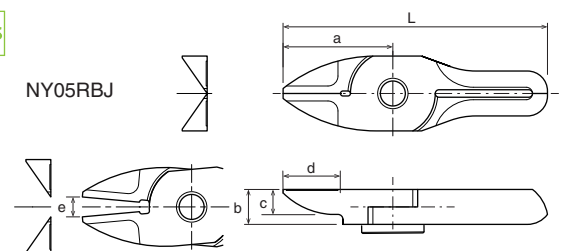
- Straight blade for easy incorporation into equipment.



※The photo represents NY05RBJ

RoHS

NY05RBJ



Reference

Capacity ϕ (mm) Copper Wire Steel Wire	Code No.	Model No.	Size (mm)					Weight (g)	Material	Applicable Nippers (GT-)	JAN (4907587)	
			a	b	c	d Effective Length	e Blade Opening					L Overall Length
1.6 / 1.0	360559	NY05RBJ	22	7	5	11.5	4	53	22	Special alloy steel	NF05	370426

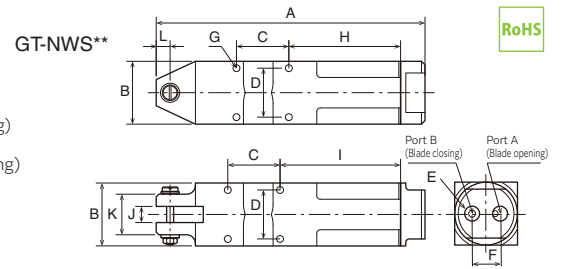
Double Action Air Nipper (Square Type)

- Blade opening and closing is driven by air piston.
- Blades are OPTION.

GT-NWS1/10/20/30



※The photo represents GT-NWS20.



Reference

Capacity ϕ (mm)		Code No.	Model No.	Size (mm)											Air Consumption (cm ³ /str)	Air Pressure (MPa)	Weight (g)	Hose I/D (mm)	JAN (4907587)	
Copper Wire	Steel Wire			A	B	C	D	E	F	G	H	I	J	K						L
1.0	1.5	360702	GT-NWS1	95	20×18	40	16	M5-P0.8	9	M3 Depth4.5	-	32	5	16	6	95	0.4~0.5	116	I/D ϕ 2.5×0/D ϕ 4	309730
1.8	1.2	360706	GT-NWS10	146	36×36	30	28	PT1/8	16	M4 Depth6	64	69	9	23	8	146	0.4~0.5	356	I/D ϕ 4×0/D ϕ 6	309778
2.6	2.0	360707	GT-NWS20	176	45×45	40	36	PT1/8	18	M4 Depth8	68.5	73.5	12	26	9.5	165	0.5~0.6	610	I/D ϕ 4×0/D ϕ 6	309785
3.3	2.8	360708	GT-NWS30	231	56×56	60	46	PT1/4	24	M5 Depth12	84.5	94.5	17	36	13	230.5	0.5~0.6	1,115	I/D ϕ 4×0/D ϕ 6	309891

※The capacity is for reference only when mounting a standard blade. Subject to the blade type and the material of the product to cut.
 ※Overall length, Weight: Accessories not included.

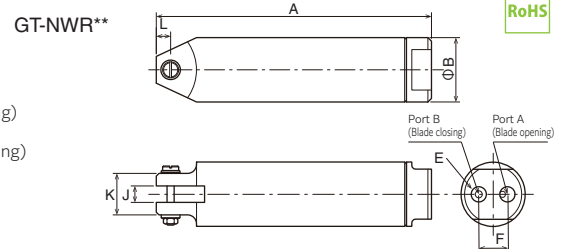
Double Action Air Nipper (Round Type without Lever)

- Blade opening and closing is driven by air piston.
- Blades are OPTION.

GT-NWR10/20/30



※The photo represents GT-NWR20.



Reference

Capacity ϕ (mm)		Code No.	Model No.	Size (mm)								Air Consumption (cm ³ /str)	Air Pressure (MPa)	Weight (g)	Hose I/D (mm)	JAN (4907587)
Copper Wire	Steel Wire			A	B	E	F	J	K	L						
1.8	1.2	360710	GT-NWR10	154	36	PT1/8	16	9	23	8	146	0.4~0.5	280	I/D ϕ 4×0/D ϕ 6	309808	
2.6	2.0	360711	GT-NWR20	159.5	45	PT1/8	18	12	26	9.5	165	0.4~0.5	523	I/D ϕ 4×0/D ϕ 6	309815	
3.3	2.8	360712	GT-NWR30	213.5	56	PT1/4	24	17	36	13	230.5	0.5~0.6	980	I/D ϕ 4×0/D ϕ 6	309822	

※The capacity is for reference only when mounting a standard blade. Subject to the blade type and the material of the product to cut.
 ※Overall length, Weight: Accessories not included.

Double Action Straight Blade - Single Cutting Edge (Carbide tipped) *New* | BJB



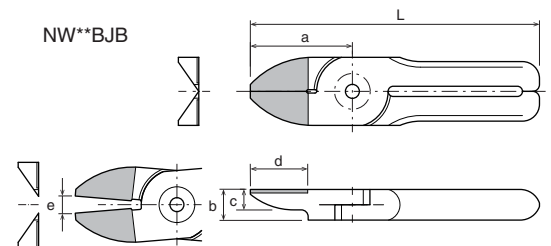
- Straight shape blade (flat shape) for metal. The carbide tips are brazed for further improved durability.



※The photo represents NW20BJB.

RoHS

NW**BJB



Reference

Capacity ϕ (mm)		Code No.	Model No.	Size (mm)						Weight (g)	Material	Applicable Nippers (GT-)	JAN (4907587)
Copper Wire	Steel Wire			a	b	c	d Effective Length	e Blade Opening	L Overall Length				
New 1.8	1.2	360464	NW10BJB	30	9	6	16.5	5	85	80	Carbide tipped	GT-NWR10/NWS10	035226
New 2.6	2.0	360465	NW20BJB	40	12	6	24.5	8	100	149	Carbide tipped	GT-NWR20/NWS20	035783

Double Action Straight Blade - Single Cutting Edge | BJ



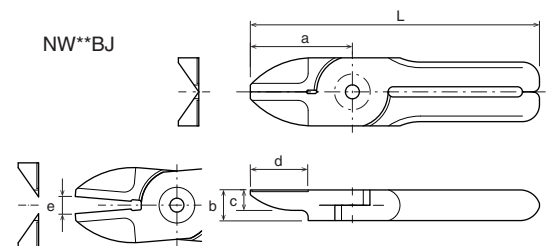
- Straight shape blade (flat shape) for metal.



※The photo represents NW20BJ.

RoHS

NW**BJ



Reference

Capacity ϕ (mm)		Code No.	Model No.	Size (mm)						Weight (g)	Material	Applicable Nippers (GT-)	JAN (4907587)
Copper Wire	Steel Wire			a	b	c	d Effective Length	e Blade Opening	L Overall Length				
1.0	0.5	360450	NW1BJ	20	5	3	10.5	3.5	50	16	Special alloy steel	NWS1	370006
1.8	1.2	360453	NW10BJ	30	9	6	14	5	85	76	Special alloy steel	NWR10/NWS10	370709
2.6	2.0	360459	NW20BJ	40	12	6	21.5	8	100	142	Special alloy steel	NWR20/NWS20	370747
3.3	2.8	360460	NW30BJ	55	17	8	29.5	11	140	367	Special alloy steel	NWR30/NWS30	370754

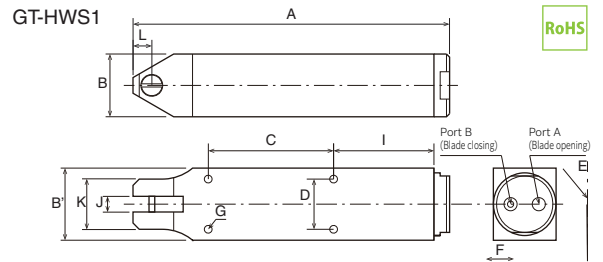
Double Action Air Scissor (Square Type)

GT-HWS1/10

- Blade opening and closing is driven by air piston.
- Free from troubles due to the spring breakage because there is no spring part in the nipper body and blade.
- Blades are OPTION.



※The photo represents GT-HWS1.



RoHS

Reference

Capacity ϕ (mm) Copper Wire Steel Wire	Code No.	Model No.	Size (mm)												Air Consumption (cm ³ /str)	Air Pressure (MPa)	Weight (g)	Hose I/D (mm)	JAN (4907587)
			A	B	C	D	E	F	G	H	I	J	K	L					
1.0 0.5	360700	GT-HWS1	101	23×20	40	16	M5-P0.8	9	M3 Depth4.5	-	32	5	16	6	45	0.4~0.5	116	I/D Φ 2.5×O/D Φ 4	309716
1.8 1.2	360713	GT-HWS10	154	36×36	30	28	PT1/8"	16	M4 Depth6	64	69	9	23	8	116	0.4~0.6	356	I/D Φ 4×O/D Φ 6	309747

※The capacity is for reference only when mounting a standard blade. Subject to the blade type and the material of the product to cut.

※Overall length, Weight: Accessories not included.

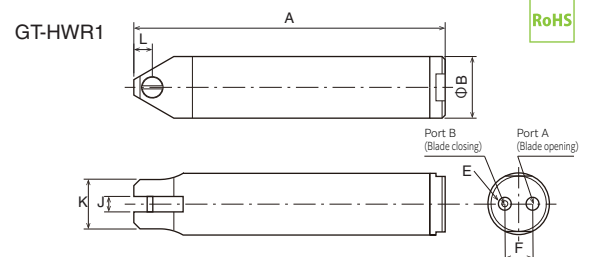
Double Action Air Scissor (Round Type without Lever)

GT-HWR1/10

- Blade opening and closing is driven by air piston.
- Free from troubles due to the spring breakage because there is no spring part in the nipper body and blade.
- Blades are OPTION.



※The photo represents GT-HWR1.



RoHS

Reference

Capacity ϕ (mm) Copper Wire Steel Wire	Code No.	Model No.	Size (mm)							Air Consumption (cm ³ /str)	Air Pressure (MPa)	Weight (g)	Hose I/D (mm)	JAN (4907587)
			A	B	E	F	J	K	L					
1.0 0.5	360701	GT-HWR1	101	20	M5-P0.8	9	5	16	6	45	0.4~0.5	84	I/D Φ 2.5×O/D Φ 4	309723
1.8 1.2	360714	GT-HWR10	154	36	PT1/8"	16	9	23	8	116	0.4~0.6	295	I/D Φ 4×O/D Φ 6	309754

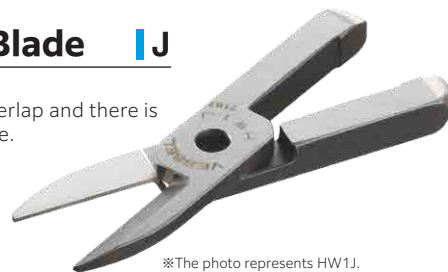
※The capacity is for reference only when mounting a standard blade. Subject to the blade type and the material of the product to cut.

※Overall length, Weight: Accessories not included.

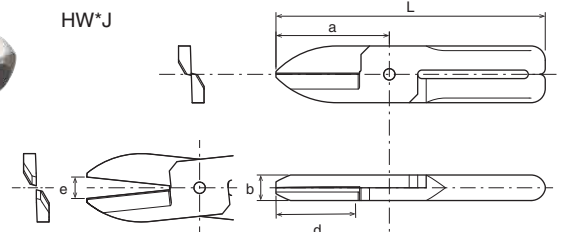
Double Action Scissor Blade J



- Scissor type blade for metal
- The scissor cutting edges overlap and there is less remain of cutting residue.



※The photo represents HW1J.



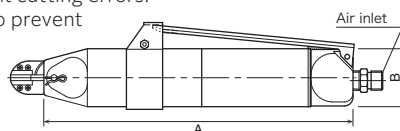
Reference

Capacity ϕ (mm) Copper Wire Steel Wire	Code No.	Model No.	Size (mm)					Weight (g)	Material	Applicable Nippers (GT-)	JAN (4907587)
			a	b	d Effective Length	e Blade Opening	L Overall Length				
1.0 0.5	360452	HW1J	25	5.3	17	3	55	16	Special alloy steel	GT-HWR1/HWS1	370013
1.8 1.2	360462	HW10J	40	9.4	28	5	95	76	Special alloy steel	GT-HWR10/HWS10	370020

Air Nipper for Orchid Support Stick

GT-NZ15

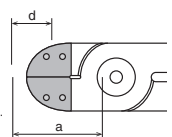
- Includes a cutting position stopper to prevent cutting errors.
- Blades are equipped with urethane covers to prevent the stick from flying off after being cut.



Blade for the GT-NZ15 NZ



※The photo represents NZ20AJ.



Reference

Capacity ϕ (mm) Annealing Wire Vinyl Stick	Code No.	Model No.	Size (mm)		Air Pressure (MPa)	Air Pressure (MPa)	Weight (g)	Hose coupling	JAN (4907587)
			A	B					
#10 ϕ 4.2-6	360759	GT-NZ15(w/NZ15AJ)	213.5	40	250	0.65	455	Rc1/4	030504
#8 ϕ 4.2-6	360758	GT-NZ15(w/NZ20AJ)	213.5	40	250	0.65	465	Rc1/4	369888

※High-hardness annealing wire may not be cut

※Overall length · Weight ... Accessories not included.

Code No.	Model No.	Size (mm)			Weight (g)	JAN (4907587)
		a	d Effective Length	e Blade Opening		
360504	NZ15AJ	30	15	7.2	132	370013
360505	NZ20AJ	31	15	7.5	142	370020

Ball Point Wrenches

Final tightening with the ball point section!

Maximum Tilting angle 38°
(designed value)

Magnetized tip can retain a hexagon socket head bolt.
Hexagonal cross-sectional neck securely retains hexagon socket head bolts. Bolts located in deep places can be easily replaced.

Long type for a deep area.
Ball point can reach deep spaces. Also, since the ball point section is on the longer shank than the standard type, it is possible to apply force on the short shank.

No. 8300BP Ball Point Wrench

Code No.	Size H	Shank H (mm)	Shank L (mm)	Package size (mm)	Inner ctn. (pcs.)	JAN (4907587)
143917	1.5	16	79	160×45×5	10	025142
143918	2	17	86	160×45×5	10	025159
143919	2.5	18	94	200×60×8	10	025166
143920	3	20	101	200×60×8	10	025173
143921	4	25	110	200×60×8	10	025180
143922	5	28	120	200×60×8	10	025197
143923	6	32	133	200×60×8	10	025203
143924	8	36	154	235×75×14	5	025210
143925	10	40	172	235×75×14	5	025227

No. 8300BP-L Ball Point Wrench (Long Type)

Code No.	Size H	Shank H (mm)	Shank L (mm)	Package size (mm)	Inner ctn. (pcs.)	JAN (4907587)
143927	1.5	16	79	160×45×5	10	025241
143928	2	17	95	200×60×8	10	025258
143929	2.5	18	110	200×60×8	10	025265
143930	3	20	126	200×60×8	10	025272
143931	4	25	142	200×60×8	10	025289
143932	5	28	160	235×75×14	5	025296
143933	6	32	180	235×75×14	5	025302
143934	8	36	200	280×65×14	5	025319
143935	10	40	224	350×75×14	5	025326
143936	12	45	250	350×110×12*	30	025333
143937	14	55	280	350×110×14*	30	025340
143938	17	60	320	400×130×17*	20	025357
143939	19	70	360	400×130×19*	20	025364

*Supplied in a plastic bag

No. 8309BP Ball Point Wrench 9-pc. set

Code No.	Set content
143926	H 1.5, 2, 2.5, 3, 4, 5, 6, 8, 10 mm

Accessory	Package size (mm)	Inner ctn. (sets)	JAN (4907587)
Holder	245×105×27	5	025234

No. 8309BP-L Ball Point Wrench (Long Type) 9-pc. set

Code No.	Set content
143940	H 1.5, 2, 2.5, 3, 4, 5, 6, 8, 10 mm

Accessory	Package size (mm)	Inner ctn. (sets)	JAN (4907587)
Holder	295×105×27	10	025371

⚠ Cautions

- Do not touch the blade.
- Always wear protective goggles and earplugs when working with the product.
- When installing or replacing blades or nippers, be sure to shut off the power source.
- Do not use the product if any abnormality such as cracks, chipping, abrasion, or deformation is found.
- Do not use the product in which electricity is running.
- The product may cause vibration.
- Do not modify the product.



บริษัท นานดีอินเตอร์เทรด จำกัด
NANDEE INTER-TRADE CO., LTD.

314,316,318,320,322 ซอยจันทน์ 32 ถนนจันทน์ แขวงทุ่งวัดดอน เขตสาทร กทม. 10120

☎ : 0-2675-8239

LINE : @nandeeintertrade

f : nandeeintertrade

🌐 : www.nandee.co.th

✉ : marketing@nandee.co.th
sales@nandee.co.th